

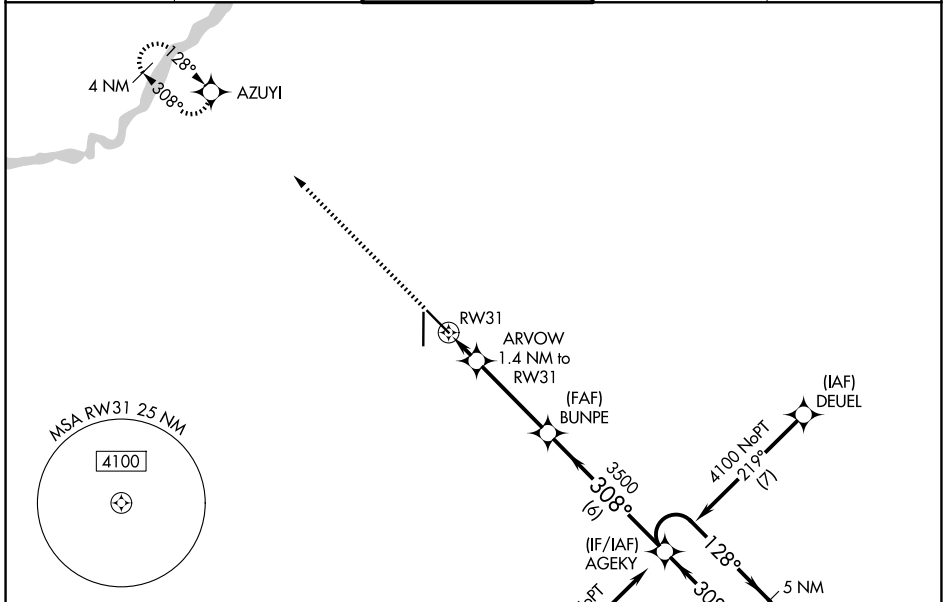
APP CRS	Rwy Ldg	6608
308°	TDZE	1844
	Apt Elev	1847

RNAV (GPS) RWY 31

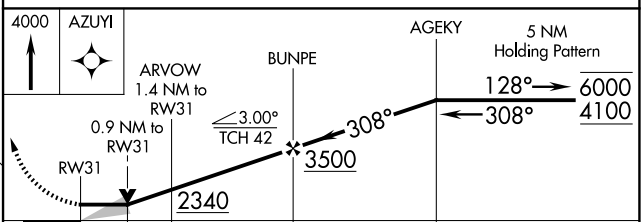
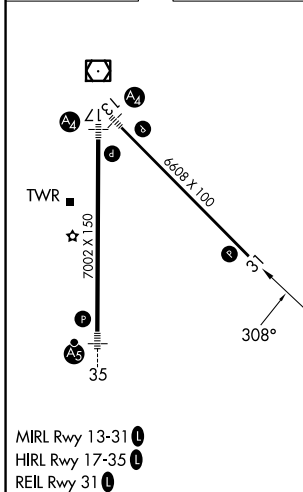
CENTRAL NEBRASKA RGNL (GRI)

RNP APCH - GPS.		MISSED APPROACH: Climb to 4000 direct AZUYI and hold.	
▽	VDP NA when using Aurora altimeter setting. When local altimeter setting not received, use Aurora altimeter setting and increase all MDA 60 feet; increase LNAV Cats C/D visibility 1/8 SM and Circling Cats C/D visibility 1/4 SM.		

ATIS 127.4	MINNEAPOLIS CENTER 119.4 278.8	GRAND ISLAND TOWER* 118.2 (CTAF) 259.3	GND CON 121.9 259.3	UNICOM 122.95
----------------------	--	--	-------------------------------	-------------------------



ELEV 1847	D	TDZE 1844
-----------	----------	-----------



CATEGORY	A	B	C	D
LNAV MDA	2180-1 336 (400-1)			
CIRCLING	2300-1 453 (500-1)	2400-1½ 553 (600-1½)	2560-2¼ 713 (800-2¼)	

NC-2, 11 JUN 2026 to 09 JUL 2026

NC-2, 11 JUN 2026 to 09 JUL 2026