

LOC/DME I-SMR 111.3 Chan 50	APP CRS 032°	Rwy Ldg 10502 TDZE 3680 Apt Elev 3680
--	------------------------	--

ILS RWY 3 (SA CAT I)

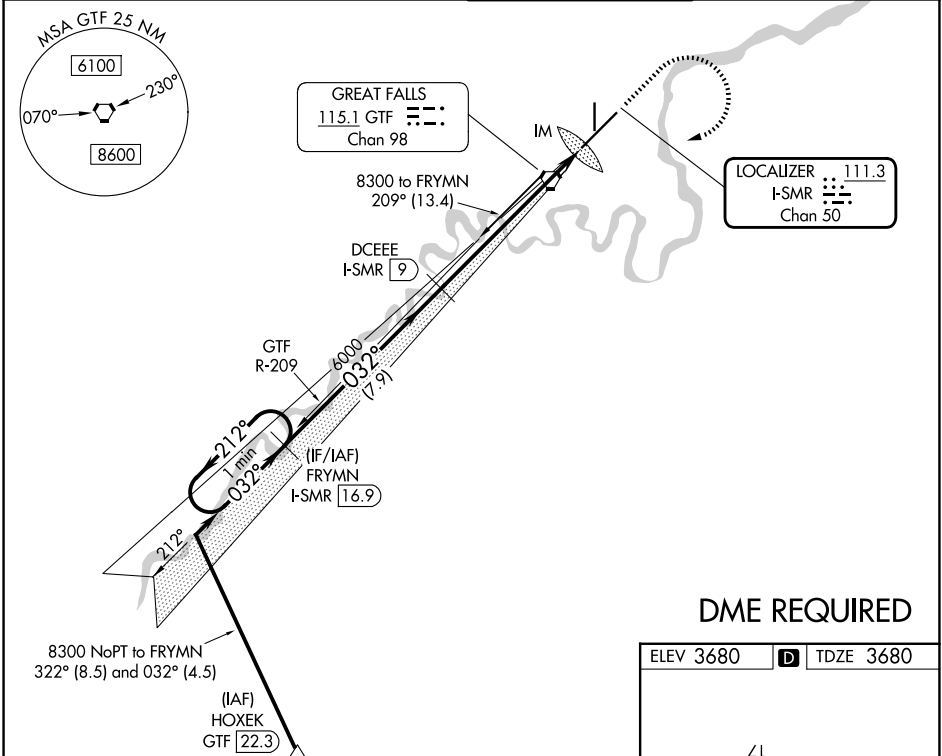
GREAT FALLS INTL (GTF)

⚠ Requires specific OPSPEC, MSPEC, or LOA approval and use of HUD to DH. DME required.

ALSIF-2

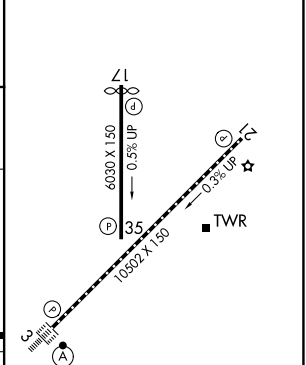
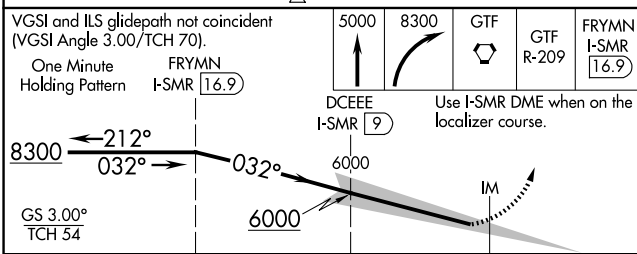
MISSED APPROACH: Climb to 5000 then climbing right turn to 8300 direct GTF VORTAC then on GTF VORTAC R-209 to FRYMNI/I-SMR 16.9 DME and hold.

ATIS 126.6 269.0	GREAT FALLS APP CON 128.6 379.175	GREAT FALLS TOWER 118.7 282.2	GND CON 121.7 348.6
-----------------------------------	--	--	--------------------------------------



DME REQUIRED

ELEV 3680	D	TDZE 3680
-----------	----------	-----------



CATEGORY	A	B	C	D
S-ILS 3	RA 140/14 150 DA 3830			

SA CATEGORY I ILS-SPECIAL AIRCREW & AIRCRAFT CERTIFICATION REQUIRED

TDZ/CL Rwy 3
REIL Rwy 21
HIRL Rwy 3-21
MIRL Rwy 17-35

NW-1, 11 JUN 2026 to 09 JUL 2026

NW-1, 11 JUN 2026 to 09 JUL 2026