

# RNAV (RNP) Z RWY 21

GREAT FALLS INTL (GTF)

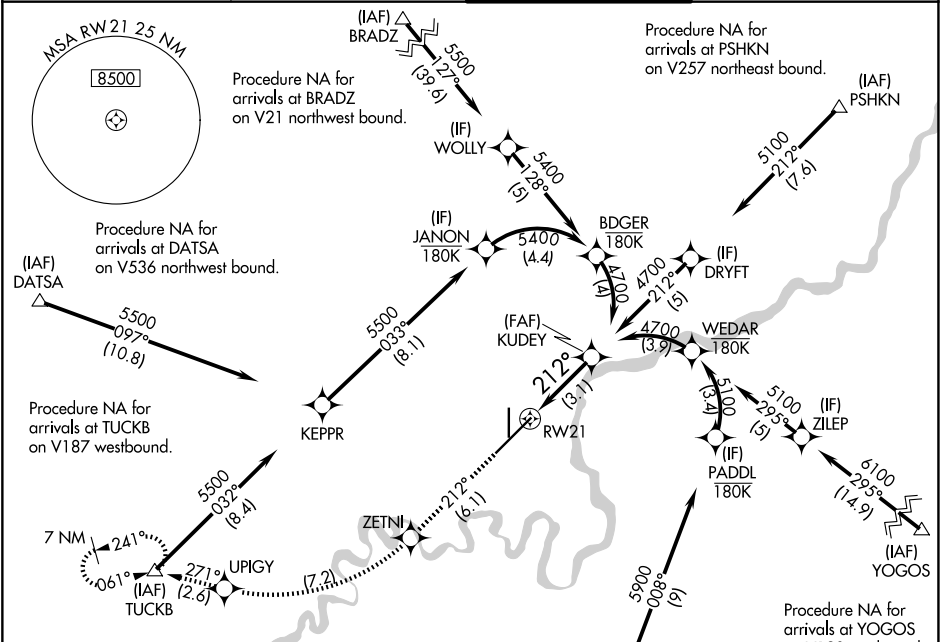
APP CRS	Rwy Ldg	<b>10502</b>
<b>212°</b>	TDZE	<b>3669</b>
	Apt Elev	<b>3680</b>

RNP AR APCH - GPS.

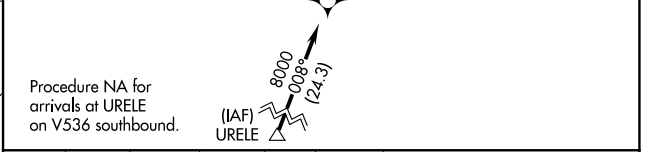
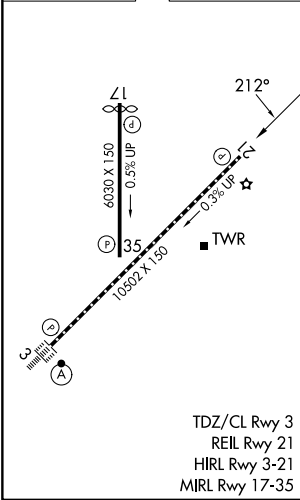
For uncompensated Baro-VNAV systems, procedure NA below -24°C or above 54°C.

MISSED APPROACH: Climb to 8000 on track 212° to ZETNI, right turn to UPIGY and on track 271° to TUCKB and hold, continue climb-in-hold to 8000.

ATIS <b>126.6 269.0</b>	GREAT FALLS APP CON <b>128.6 379.175</b>	GREAT FALLS TOWER <b>118.7 282.2</b>	GND CON <b>121.7 348.6</b>
----------------------------	---	---	-------------------------------



ELEV 3680	<b>D</b>	TDZE 3669
-----------	----------	-----------



8000	ZETNI	UPIGY	TUCKB	KUDEY
tr 212°	☆	☆	△	4700
VGSI and RNAV glidepath not coincident (VGSI Angle 3.00/TCH 75).				
RWY21				
See planview for multiple IF locations.				
3.1 NM				
GP 3.00°				
TCH 59				

CATEGORY	A	B	C	D
RNP 0.10 DA		3942/45	273 (300-7%)	
RNP 0.30 DA		3992/50	323 (400-1)	

## AUTHORIZATION REQUIRED

NW-1, 11 JUN 2026 to 09 JUL 2026

NW-1, 11 JUN 2026 to 09 JUL 2026