

WAAS CH 97710 W23A	APP CRS 234°	Rwy Ldg TDZE Apt Elev	9601 889 926
--	------------------------	-----------------------------	---

RNAV (GPS) RWY 23L

PIEDMONT TRIAD INTL (GSO)

RNP APCH - GPS.

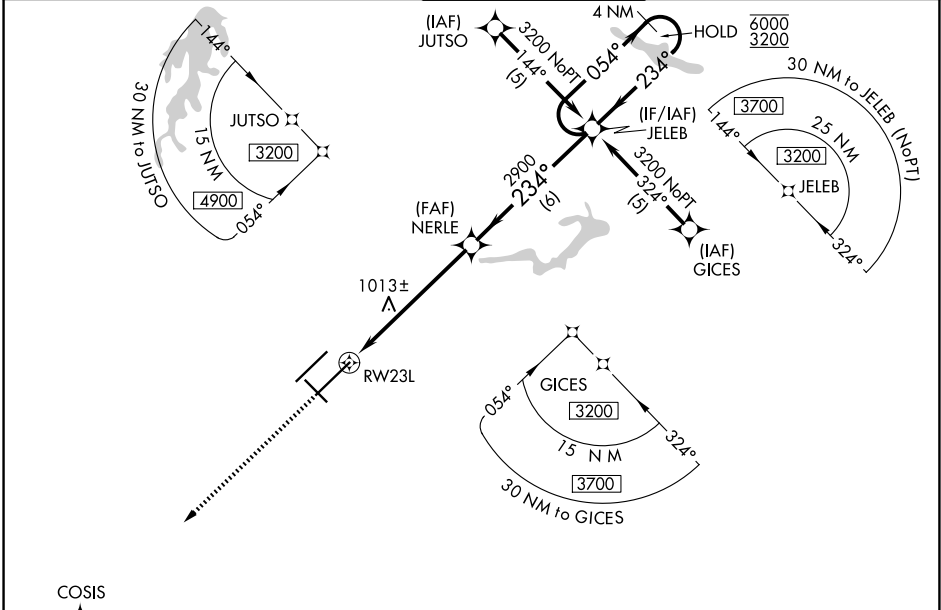
Simultaneous approach authorized. LNAV procedure NA during simultaneous operations.
Use of FD or AP required during simultaneous operations. For uncompensated Baro-VNAV systems, LNAV/VNAV NA below -16°C or above 54°C.

ALSF-2

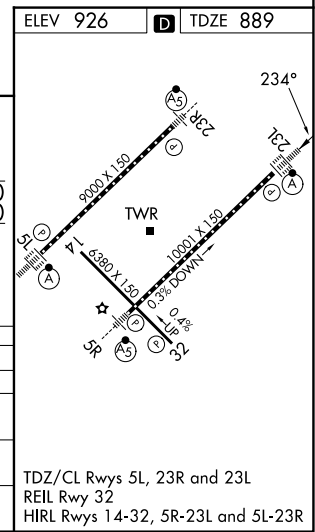


MISSED APPROACH:
Climb to 3000 direct
COSIS and hold.

D-ATIS 128.55	GREENSBORO APP CON 124.35 269.225 (250°-049°) 126.6 327.075 (050°-249°)	GREENSBORO TOWER 119.1 290.325	GND CON 121.9 348.6	CLNC DEL 121.75
-------------------------	---	--	-------------------------------	---------------------------



<p>3000 COSIS</p> <p>VGSI and RNAV glidepath not coincident (VGSI Angle 3.00/TCH 55).</p>		<p>4 NM Holding Pattern</p> <p>JELEB 6000 / 3200</p> <p>NERLE 2900</p> <p>054° → 6000 / 3200</p> <p>← 234°</p> <p>GP 3.00° TCH 52</p>		
<p>1.1 NM to RW23L</p> <p>1.1 NM</p> <p>5 NM</p> <p>6 NM</p>				
CATEGORY	A	B	C	D
LPV DA		1089/18	200 (200-½)	
LNAV/VNAV DA		1283/35	394 (400-¾)	
LNAV MDA	1280/24	391 (400-½)	1280/35	391 (400-¾)
CIRCLING	1440-1	514 (600-1)	1700-2¼	1700-2½
			774 (800-2¼)	774 (800-2½)



SE-2, 11 JUN 2026 to 09 JUL 2026

SE-2, 11 JUN 2026 to 09 JUL 2026