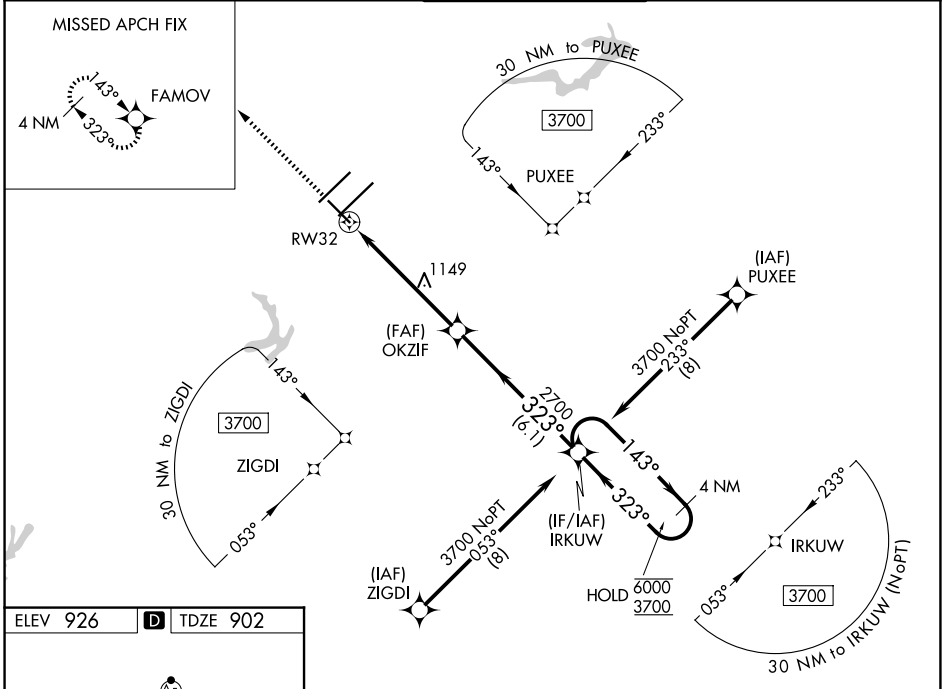


WAAS CH <b>61035</b> <b>W32A</b>	APP CRS <b>323°</b>	Rwy Ldg <b>6380</b> TDZE <b>902</b> Apt Elev <b>926</b>
----------------------------------------	------------------------	---------------------------------------------------------------

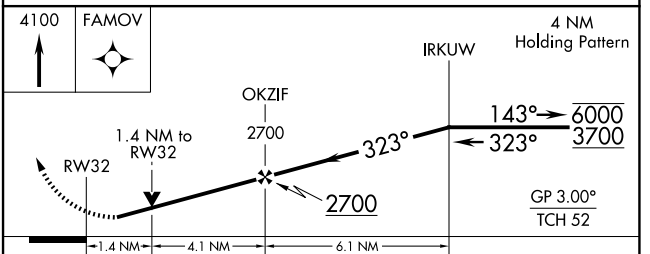
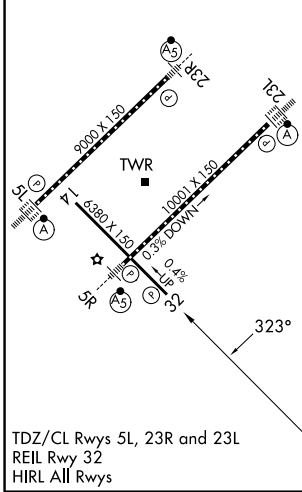
# RNAV (GPS) RWY 32

PIEDMONT TRIAD INTL (GSO)

RNP APCH - GPS.		<p><b>⚠</b> For uncompensated Baro-VNAV systems, LNAV/VNAV NA below -7°C or above 54°C. Rwy 32 helicopter visibility reduction below ¾ SM NA.</p>		<p>MISSED APPROACH: Climb to 4100 direct FAMOV and hold, continue climb-in-hold to 4100.</p>	
D-ATIS <b>128.55</b>	GREENSBORO APP CON <b>124.35 269.225</b> <b>126.6 327.075</b> (050°-249°)	GREENSBORO TOWER <b>119.1 290.325</b>	GND CON <b>121.9 348.6</b>	CLNC DEL <b>121.75</b>	



ELEV 926	<b>D</b>	TDZE 902
----------	----------	----------



CATEGORY	A	B	C	D
LPV DA		1102-¾	200 (200-¾)	
LNAV/VNAV DA		1419-1⅓	517 (500-1⅓)	
LNAV MDA	1400-1	498 (500-1)	1400-1⅓	498 (500-1⅓)
CIRCLING	1440-1	514 (600-1)	1700-2¼ 774 (800-2¼)	1700-2½ 774 (800-2½)

SE-2, 11 JUN 2026 to 09 JUL 2026

SE-2, 11 JUN 2026 to 09 JUL 2026