

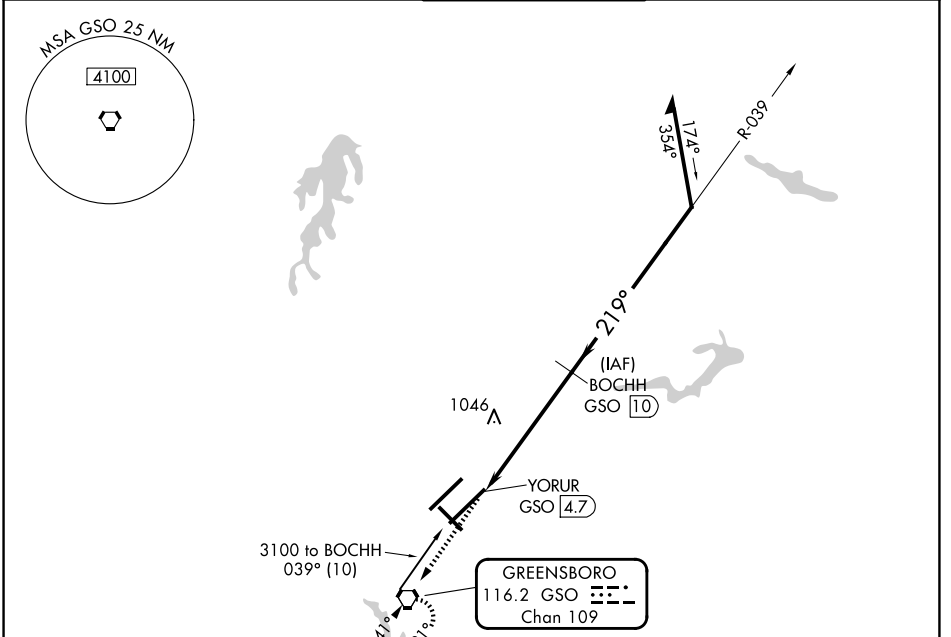
VORTAC GSO <b>116.2</b> Chan <b>109</b>	APP CRS <b>219°</b>	Rwy Ldg <b>9601</b> TDZE <b>889</b> Apt Elev <b>926</b>
---	------------------------	---

# VOR/DME RWY 23L

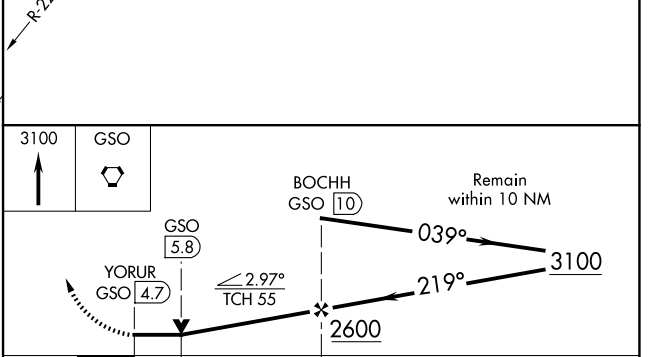
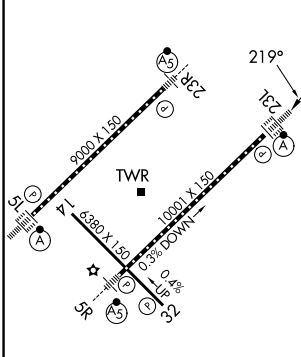
PIEDMONT TRIAD INTL (GSO)

<p>For inop ALS, increase S-23L Cat D visibility to RVR 6000.</p>	<p>ALSF-2</p>	<p>MISSED APPROACH: Climb to 3100 direct GSO VORTAC and hold, continue climb-in-hold to 3100.</p>
---	---------------	---

D-ATIS <b>128.55</b>	GREENSBORO APP CON <b>124.35 269.225</b> (250°-049°) <b>126.6 327.075</b> (050°-249°)	GREENSBORO TOWER <b>119.1 290.325</b>	GND CON <b>121.9 348.6</b>	CLNC DEL <b>121.75</b>
-------------------------	---	--	-------------------------------	---------------------------



ELEV 926	<b>D</b>	TDZE 889
----------	----------	----------



CATEGORY	A	B	C	D
S-23L	1300/24	411 (400-½)	1300/40 411 (400-¾) 411 (400-1)	1300/50 411 (400-1)
CIRCLING	1440-1	514 (600-1)	1700-2¼ 774 (800-2¼)	1700-2½ 774 (800-2½)

SE-2, 11 JUN 2026 to 09 JUL 2026

SE-2, 11 JUN 2026 to 09 JUL 2026