

| | | |
|-------------|----------|-------------|
| APP CRS | Rwy Ldg | 8000 |
| 227° | TDZE | 938 |
| | Apt Elev | 956 |

RNAV (GPS) RWY 23

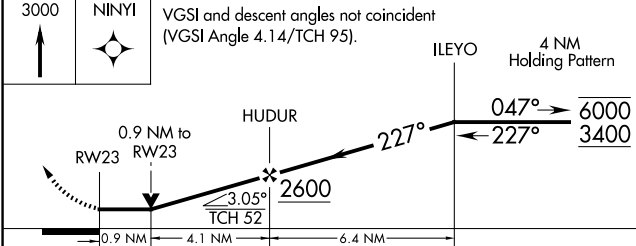
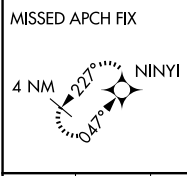
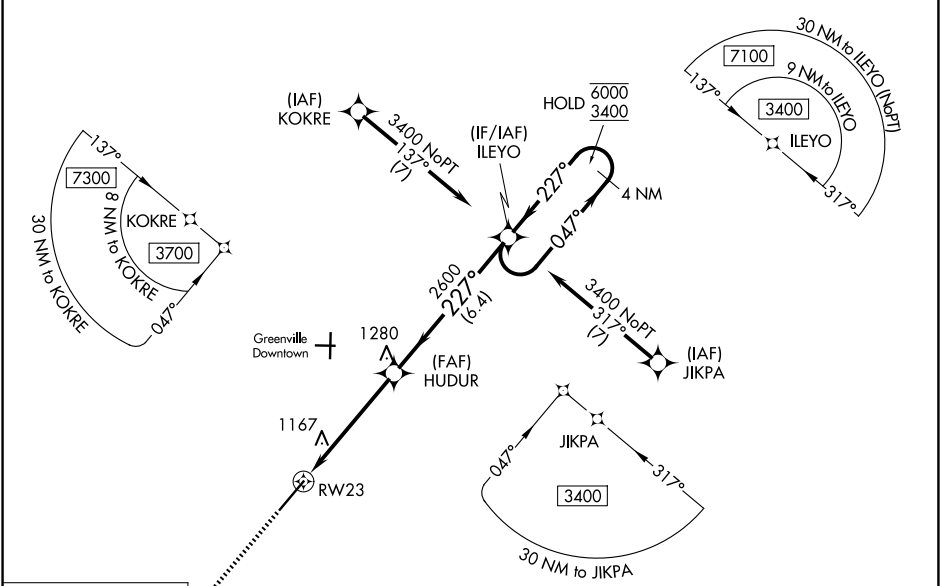
DONALDSON FLD (GYH)

RNP APCH - GPS.

▼ Rwy 23 helicopter visibility reduction below 3/4 SM NA. When local altimeter setting not received, use Greer altimeter setting and increase all MDAs 40 feet and LNAV visibility Cat C/D 1/8 SM. VDP NA when using Greer altimeter setting.

MISSED APPROACH:
Climb to 3000 direct NINYI and hold.

| | | | | |
|------------------------|--|--|-------------------------|------------------------|
| ATIS 127.325 | GREER APP CON★ 118.8 270.275 | DONALDSON TOWER★ 133.325 (CTAF) 269.25 | GND CON 121.4 | UNICOM 122.7 |
|------------------------|--|--|-------------------------|------------------------|



| | |
|--|--|
| ELEV 956 | TDZE 938 |
| | |
| CATEGORY A B C D | |
| LNAV MDA | 1420-1 482 (500-1) 1420-1 3/8 482 (500-1 3/8) |
| CIRCLING | 1420-1 1480-1 1480-1 1/2 1520-2 464 (500-1) 524 (600-1) 524 (600-1 1/2) 564 (600-2) |
| HIRL Rwy 5-23 0 | |

SE-2, 11 JUN 2026 to 09 JUL 2026

SE-2, 11 JUN 2026 to 09 JUL 2026