

HI-TACAN RWY 25

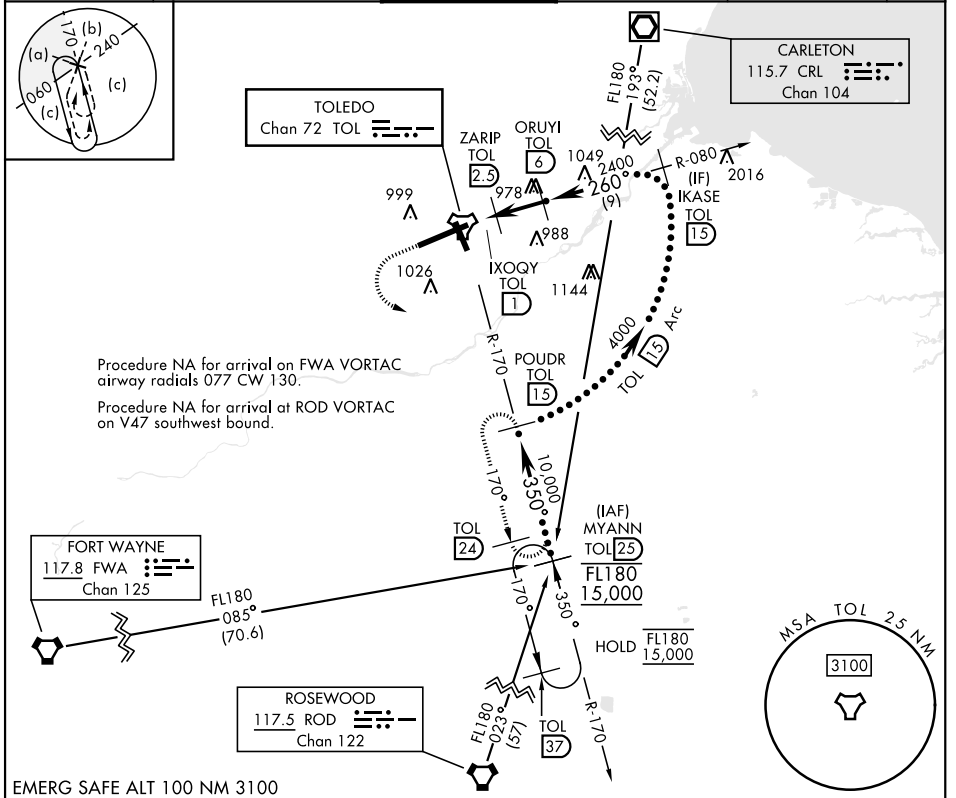
TACAN TOL Chan 72	APCH CRS 260°	Rwy Idg 10,599 TDZE 678 Arpt Elev 684
-----------------------------	-------------------------	--

[USAF]

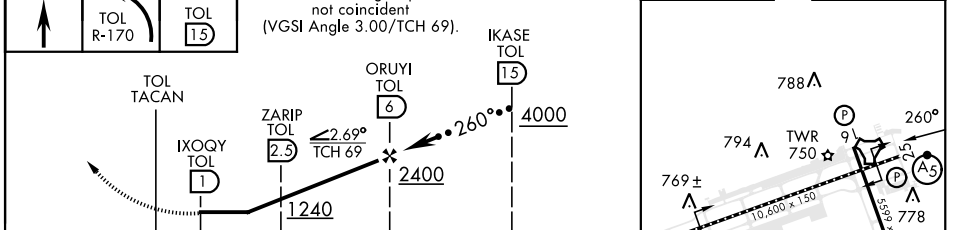
EUGENE F KRANZ TOLEDO EXPRESS (KTOL)

<p>▽ * When ALS inop, increase RVR to 60, vis to 1½ mile.</p> <p>▲</p>	<p>MALSR</p>	<p>MISSED APPROACH: Climb to 3000 then left turn on TOL R-170 to POU DR/15 DME and hold.</p>
--	--------------	--

<p>ATIS 118.75 290.225</p>	<p>TOLEDO APP CON 126.1 317.55</p>	<p>TOLEDO TOWER 118.1 285.4</p>	<p>GND CON 121.9 348.6</p>	<p>CLNC DEL 121.75 348.6</p>	<p>ASR</p>
---------------------------------------	---	--	---------------------------------------	---	------------



<p>3000</p> <p>TOL R-170</p> <p>POU DR TOL 15</p>	<p>VGSI and ILS glidepath not coincident (VGSI Angle 3.00/TCH 69).</p>	<p>ELEV 684</p> <p>TDZE 678</p>
---	--	---------------------------------



CATEGORY	C	D	E
S-25 *	1080/40 402 (500-¾)	1080/40	402 (500-¾)
CIRCLING	1360-2 676 (700-2)	1400-2¼ 716 (800-2¼)	1400-2½ 716 (800-2½)

HIRL Rwy 7-25
MIRL Rwy 16-34
REIL Rwy 16, 34
TDZL/CL Rwy 7

HI-TACAN RWY 25

EC-2, 11 JUN 2026 to 09 JUL 2026

EC-2, 11 JUN 2026 to 09 JUL 2026