

TOLEDO, OHIO

# HI-TACAN RWY 7

TACAN TOL Chan <b>72</b>	APCH CRS <b>068°</b>	Rwy Idg TDZE Arprt Elev <b>10,599</b> <b>683</b> <b>684</b>
-----------------------------	-------------------------	--

[USAF]

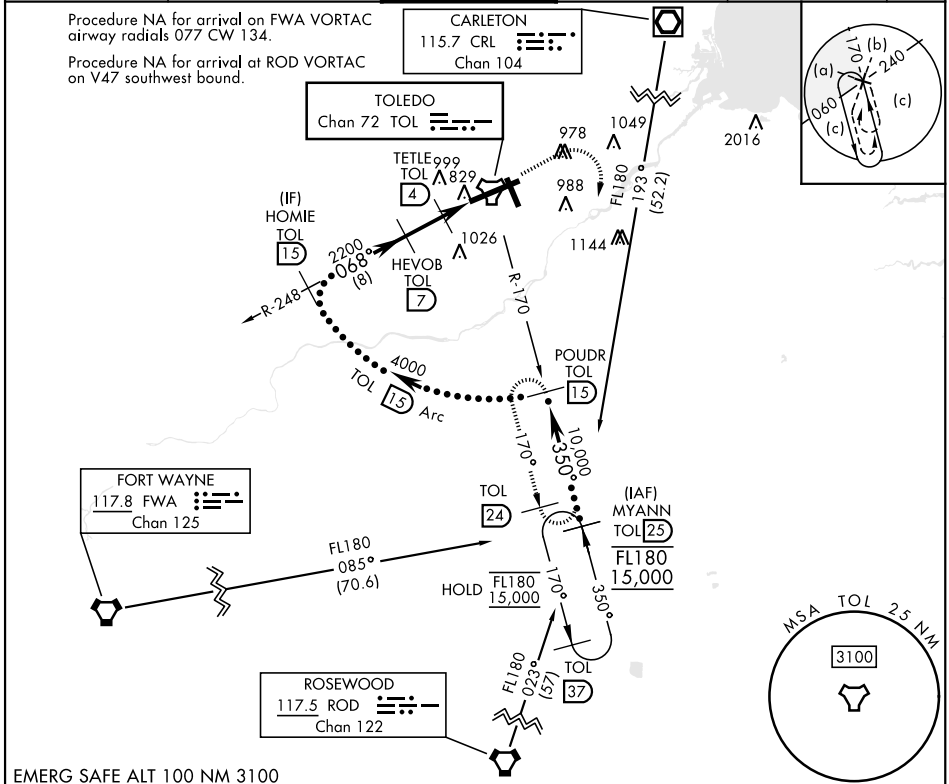
EUGENE F KRANZ TOLEDO EXPRESS (KTOL)

**V** \* When ALS inop, increase CAT E vis to 1 $\frac{1}{2}$  mile.

ALS F-2

MISSED APPROACH: Climb to 3000 then right turn on TOL TACAN R-170 to POUDR/15 DME and hold.

ATIS <b>118.75 290.225</b>	TOLEDO APP CON <b>126.1 317.55</b>	TOLEDO TOWER <b>118.1 285.4</b>	GND CON <b>121.9 348.6</b>	CLNC DEL <b>121.75 348.6</b>	ASR
-------------------------------	---------------------------------------	------------------------------------	-------------------------------	---------------------------------	-----



EMERG SAFE ALT 100 NM 3100

	3000	POUDR TOL 15	ELEV 684	TDZE 683
CATEGORY	C	D	E	
S-7 *	1140/45	457 (500-7%)		
CIRCLING	1360-2 676 (700-2)	1400-2 1/4 716 (800-2 1/4)	1400-2 1/2 716 (800-2 1/2)	
			HIRL Rwy 7-25 MIRL Rwy 16-34 REIL Rwy 16, 34 TDZL/RCLS Rwy 7	

TOLEDO, OHIO 41° 35' N-83° 48' W EUGENE F KRANZ TOLEDO EXPRESS (KTOL)

Amdt 6D 26DEC24

# HI-TACAN RWY 7

EC-2, 11 JUN 2026 to 09 JUL 2026

EC-2, 11 JUN 2026 to 09 JUL 2026