

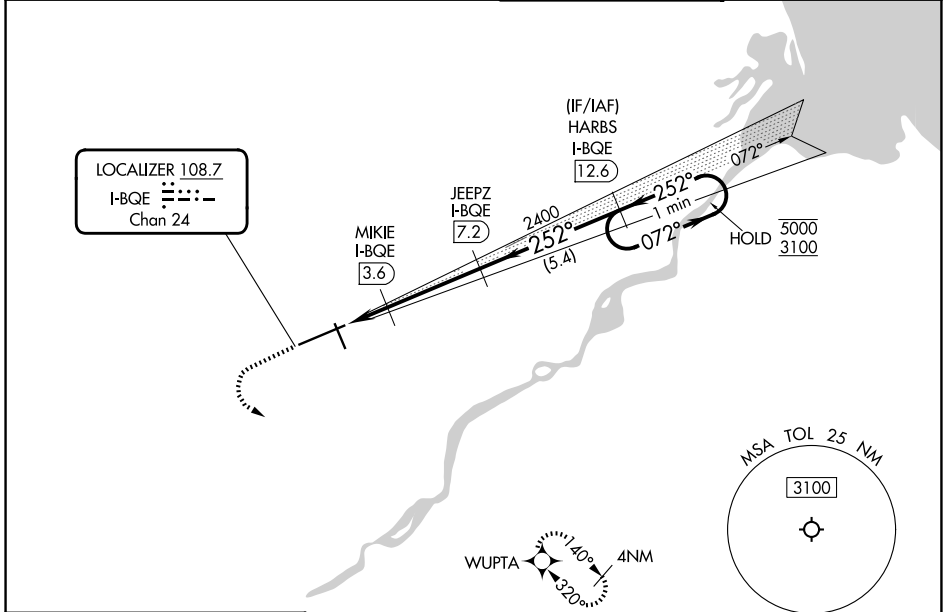
LOC/DME I-BQE 108.7 Chan 24	APP CRS 252°	Rwy Ldg 10599 TDZE 678 Apt Elev 684
---	------------------------	--

ILS Z or LOC Z RWY 25

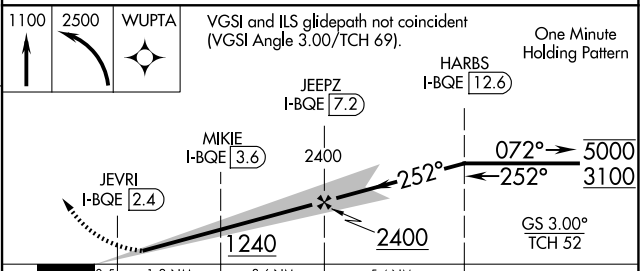
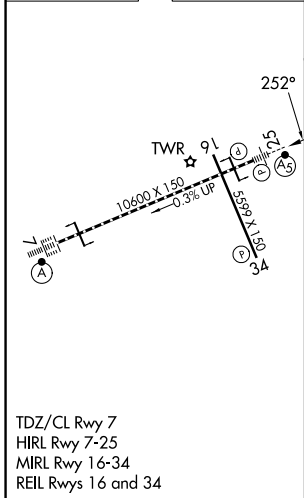
EUGENE F KRANZ TOLEDO EXPRESS (TOL)

RADAR required for procedure entry. DME, RNAV 1-GPS required.		MALSR 	MISSED APPROACH: Climb to 1100 then climbing left turn to 2500 direct WUPTA and hold.
<p>▼ For inop ALS, increase S-ILS 25 Cat E visibility to RVR 4000, and S-LOC 25 Cat E visibility to RVR 5000.</p> <p>▲ ASR * RVR 1800 authorized with use of FD or AP or HUD to DA.</p>			

ATIS 118.75 290.225	TOLEDO APP CON 134.35 317.55	TOLEDO TOWER 118.1 285.4	GND CON 121.9 348.6
-------------------------------	--	------------------------------------	-------------------------------



ELEV 684	D	TDZE 678
----------	----------	----------



WUPTA	1100	2500	WUPTA	VGSI and ILS glidepath not coincident (VGSI Angle 3.00/TCH 69).		One Minute Holding Pattern		
JEEPZ I-BQE [7.2]	MIKIE I-BQE [3.6]	2400	252°	072°	5000	3100		
JEVRI I-BQE [2.4]	1240	2400	252°	072°	5000	3100	GS 3.00° TCH 52	
	0.5	1.2 NM	3.6 NM	5.4 NM				
CATEGORY	A	B	C	D	E			
S-ILS 25 *	878/24 200 (200-½)							
S-LOC 25	1000/24	322 (400-½)	1000/26	322 (400-½)				
CIRCLING	1200-1	516 (600-1)	1300-1¾ 616 (700-1¾)	1360-2¼ 676 (700-2¼)	1360-2½ 676 (700-2½)			

TOLEDO, OHIO
Amdt 9B 14JUL22

41°35'N-83°48'W

EUGENE F KRANZ TOLEDO EXPRESS (TOL)

ILS Z or LOC Z RWY 25

EC-2, 11 JUN 2026 to 09 JUL 2026

EC-2, 11 JUN 2026 to 09 JUL 2026