

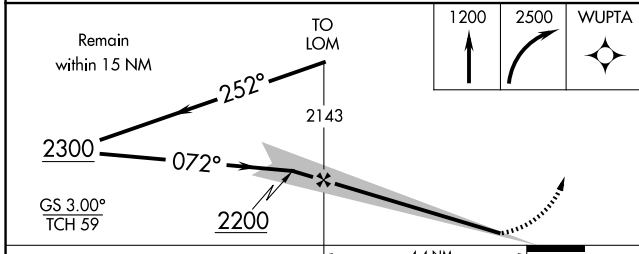
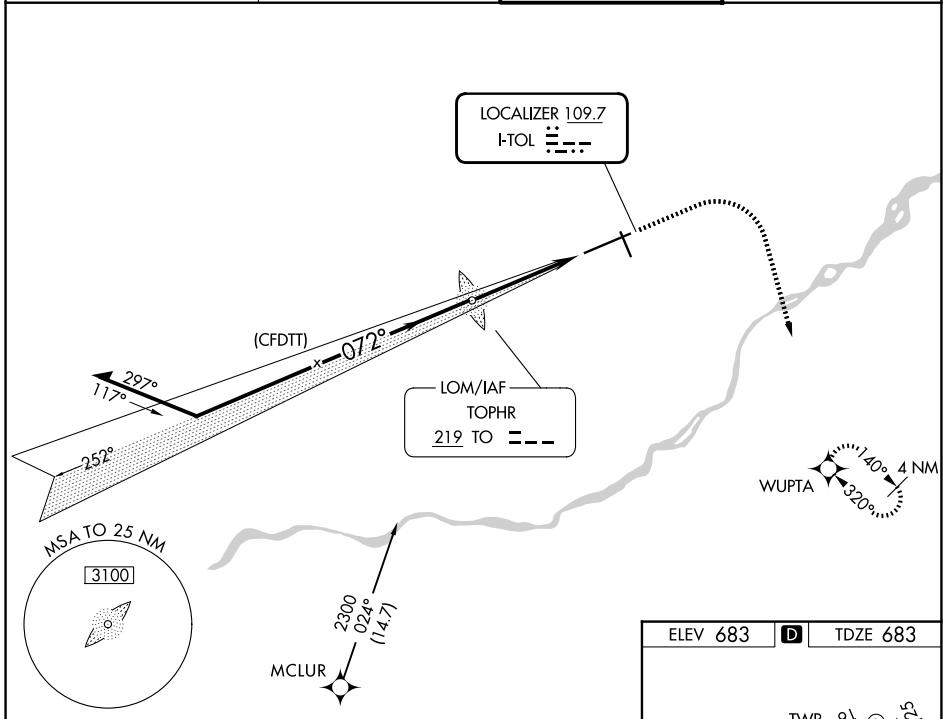
LOC I-TOL <b>109.7</b>	APP CRS <b>072°</b>	Rwy Ldg <b>10599</b> TDZE <b>683</b> Apt Elev <b>683</b>
---------------------------	------------------------	--

# ILS Z or LOC Z RWY 7

EUGENE F KRANZ TOLEDO EXPRESS (TOL)

ADF or RADAR required for procedure entry. RNAV 1-GPS required. ADF required for LOC only.	ALSF-2 	MISSED APPROACH: Climb to 1200 then climbing right turn to 2500 direct WUPTA and hold.
For inop ALS, increase S-ILS 7 Cat E visibility to RVR 4000, S-LOC 7 Cat C/D/E visibility to 1 3/8 SM.		

ATIS <b>118.75 290.225</b>	TOLEDO APP CON <b>134.35 317.55</b>	TOLEDO TOWER <b>118.1 285.4</b>	GND CON <b>121.9 348.6</b>
-------------------------------	--	------------------------------------	-------------------------------



ELEV 683	<b>D</b>	TDZE 683
TDZ/CL Rwy 7 HIRL Rwy 7-25 MIRL Rwy 16-34 REIL Rws 16 and 34		
FAF to MAP 4.4 NM		
CIRCLING	60	90
	120	150
	180	
Min:Sec	4:24	2:56
	2:12	1:46
	1:28	

EC-2, 11 JUN 2026 to 09 JUL 2026

EC-2, 11 JUN 2026 to 09 JUL 2026