

LOC I-MDT 110.9	APP CRS 128°	Rwy Ldg 8070
		TDZE 308
		Apt Elev 310

ILS RWY 13 (SA CAT I)

HARRISBURG INTL (MDT)

▽ -16°C Requires specific OPSPEC, MSPEC, or LOA approval.

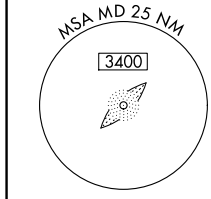
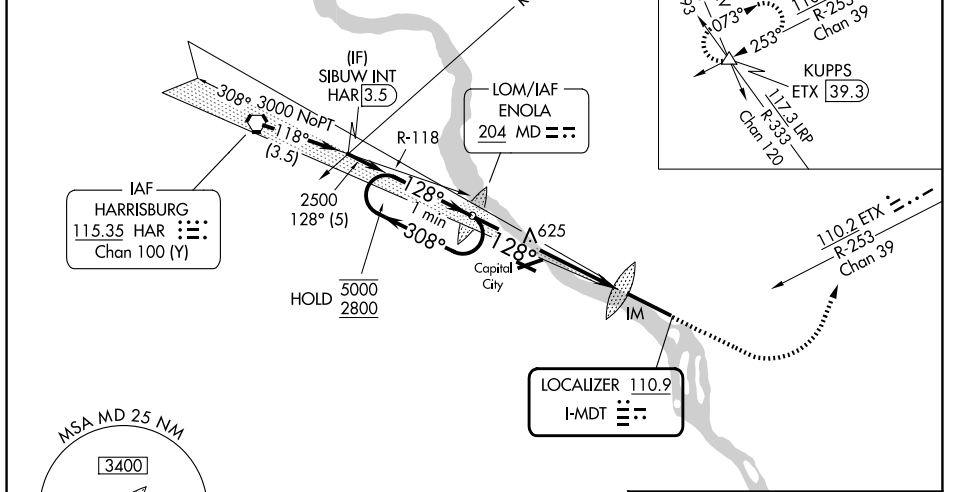
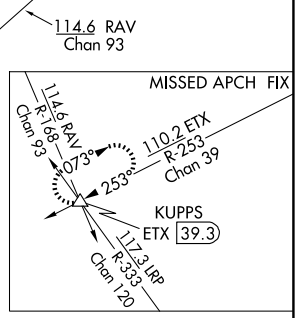
ALSIF-2

MISSED APPROACH: Climb to 900 then climbing left turn to 3000 on heading 070° and on ETX VOR/DME R-253 to KUPPS INT/ETX 39.3 DME and hold.

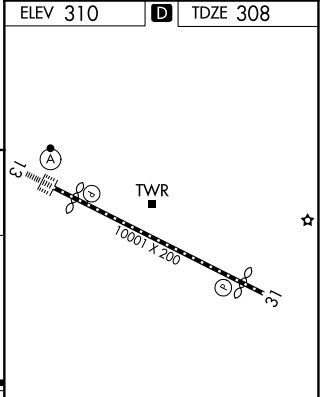
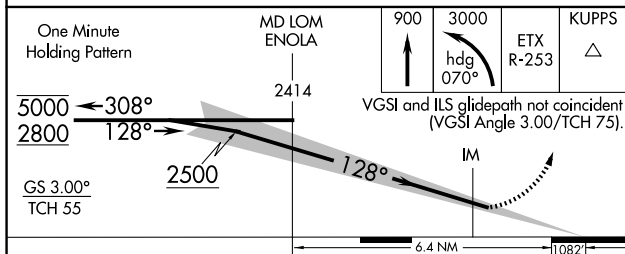
ATIS 118.8	HARRISBURG APP CON (080°-179°) 126.45 281.525 (180°-329°) 124.1 273.525 (330°-079°) 118.25 269.45	HARRISBURG INTL TOWER 124.8 269.35	GND CON 121.7 348.6
----------------------	---	--	-------------------------------

ALTERNATE MISSED APCH FIX
HARRISBURG HAR **115.35**
Chan 100 (Y)

Procedure NA for arrival on HAR VORTAC airway radials 102 CW 157 and at HAR VORTAC on V12 eastbound.



ELEV 310	D	TDZE 308
----------	----------	----------



SA CATEGORY I ILS - SPECIAL AIRCREW & AIRCRAFT CERTIFICATION REQUIRED

RA 150/14 150 DA 458

TDZ/CL Rwy 13
REIL Rwy 31
HIRL Rwy 13-31

NE-4, 11 JUN 2026 to 09 JUL 2026

NE-4, 11 JUN 2026 to 09 JUL 2026