

WAAS CH 78013 W31A	APP CRS 308°	Rwy Ldg 8129 TDZE 308 Apt Elev 310
--	------------------------	---

RNAV (GPS) RWY 31

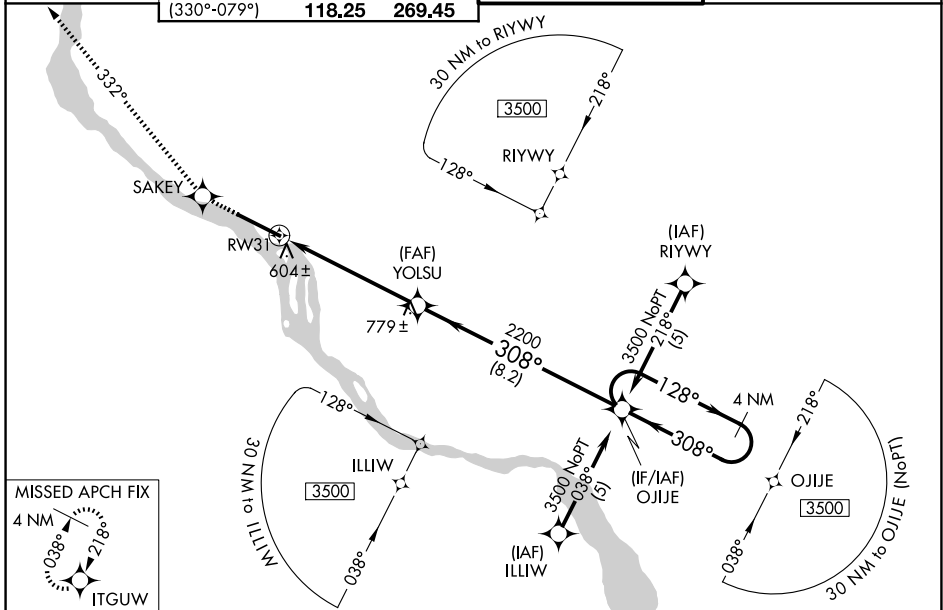
HARRISBURG INTL (MDT)

RNP APCH - GPS.

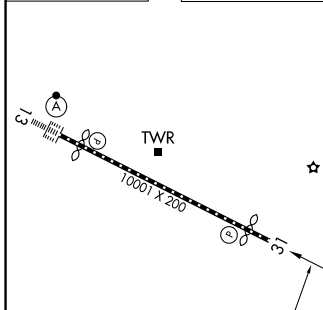
⚠ Circling NA south of Rwy 13-31. For uncompensated Baro-VNAV systems, LNAV/VNAV NA below -15°C or above 48°C.
❄ -16°C

MISSED APPROACH: Climb to 3500 direct SAKEY and on track 332° to ITGUW and hold.

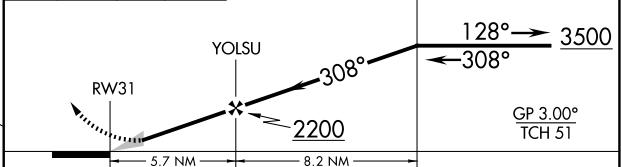
ATIS 118.8	HARRISBURG APP CON (080°-179°) 126.45 281.525 (180°-329°) 124.1 273.525 (330°-079°) 118.25 269.45	HARRISBURG INTL TOWER 124.8 269.35	GND CON 121.7 348.6
----------------------	---	--	-------------------------------



ELEV 310	D TDZE 308
----------	-------------------



3500	SAKEY	tr 332°	ITGUW	VGSI and RNAV glidepath not coincident (VGSI Angle 3.00/TCH 51).	4 NM Holding Pattern
------	-------	---------	-------	--	----------------------



CATEGORY	A	B	C	D
LPV DA		558/50	250 (300-1)	
LNAV/VNAV DA		921-2¼	613 (700-2¼)	
LNAV MDA	1100/55 792 (800-1)	1100/60 792 (800-1¼)	1100-2¼ 792 (800-2¼)	1100-2½ 792 (800-2½)
CIRCLING	1100-1 790 (800-1)	1100-1¼ 790 (800-1¼)	1100-2¼ 790 (800-2¼)	1440-3 1130 (1200-3)

TDZ/CL Rwy 13
REIL Rwy 31
HIRL Rwy 13-31

NE-4, 11 JUN 2026 to 09 JUL 2026

NE-4, 11 JUN 2026 to 09 JUL 2026