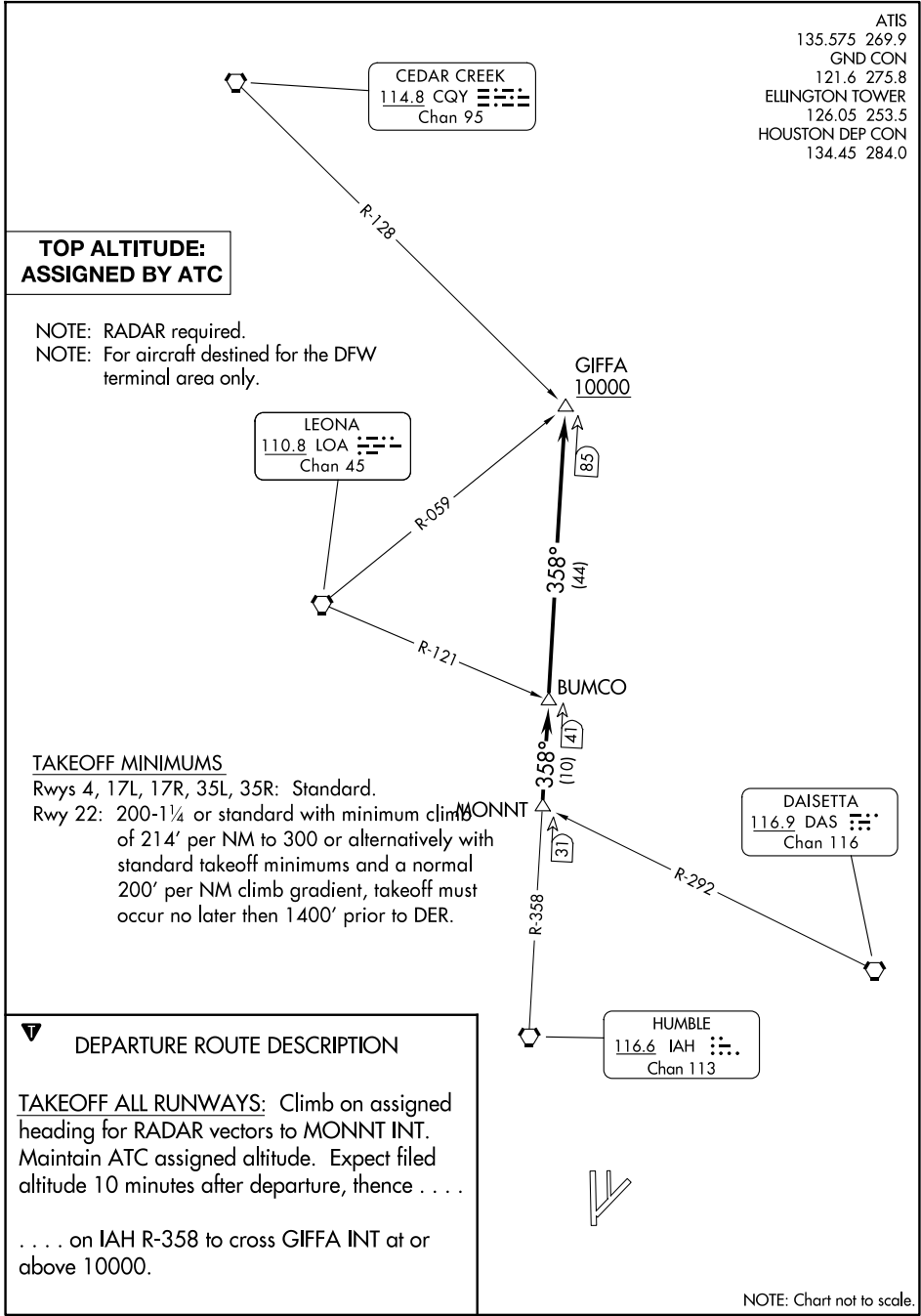


# GIFFA ONE DEPARTURE

AL-197 (FAA)

ELLINGTON (EFD)  
HOUSTON, TEXAS

ATIS  
135.575 269.9  
GND CON  
121.6 275.8  
ELLINGTON TOWER  
126.05 253.5  
HOUSTON DEP CON  
134.45 284.0



**TOP ALTITUDE:  
ASSIGNED BY ATC**

NOTE: RADAR required.  
NOTE: For aircraft destined for the DFW terminal area only.

LEONA  
110.8 LOA  
Chan 45

CEDAR CREEK  
114.8 CQY  
Chan 95

GIFFA  
10000

85  
(44)

BUMCO

358°  
(110)

MONNT

31  
(10)

DAISETTA  
116.9 DAS  
Chan 116

HUMBLE  
116.6 IAH  
Chan 113

### TAKEOFF MINIMUMS

Rwys 4, 17L, 17R, 35L, 35R: Standard.  
Rwy 22: 200-1¼ or standard with minimum climb of 214' per NM to 300 or alternatively with standard takeoff minimums and a normal 200' per NM climb gradient, takeoff must occur no later than 1400' prior to DER.

### DEPARTURE ROUTE DESCRIPTION

TAKEOFF ALL RUNWAYS: Climb on assigned heading for RADAR vectors to MONNT INT. Maintain ATC assigned altitude. Expect filed altitude 10 minutes after departure, thence . . . .

. . . . on IAH R-358 to cross GIFFA INT at or above 10000.



NOTE: Chart not to scale.

# GIFFA ONE DEPARTURE

(GIFFA1.GIFFA) 07OCT21

HOUSTON, TEXAS  
ELLINGTON (EFD)

SC-5, 11 JUN 2026 to 09 JUL 2026

SC-5, 11 JUN 2026 to 09 JUL 2026