

HOUSTON, TEXAS

HI-ILS Y or LOC Y RWY 35L

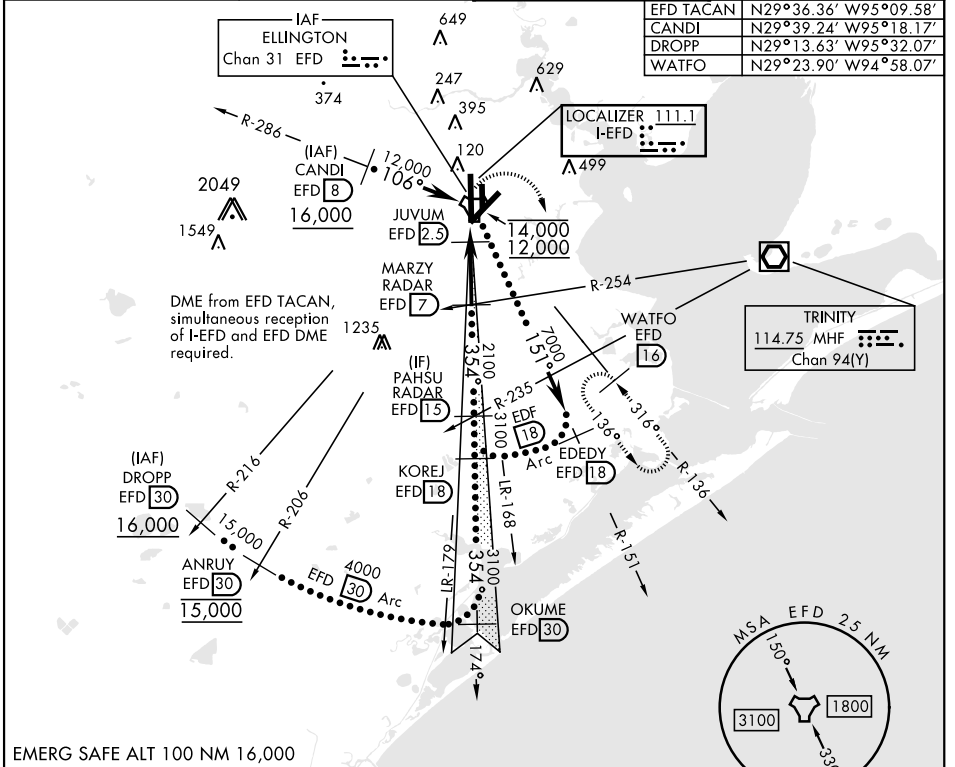
LOC I-EFD 111.1	APCH CRS 354°	Rwy Idg 9001
		TDZE 28
		Arprt Elev 33

[USAF]

ELLINGTON (KEFD)

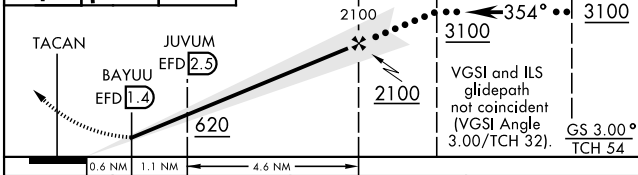
DME required. RADAR required for procedure entry.	MALSF A4	MISSED APPROACH: Climb to 500 then climbing right turn to 3100 via EFD TACAN R-136 to WATFO/EFD 16 DME and hold.
<p>▼ * When ALS inop, increase CAT CDE RVR to 60.</p> <p>** Circling not authorized W of rwy 17L-35R</p>		

ATIS 135.575 269.9	HOUSTON APP CON 134.45 284.0	TOWER 126.05 253.5	GND CON 121.6 275.8
------------------------------	--	------------------------------	-------------------------------

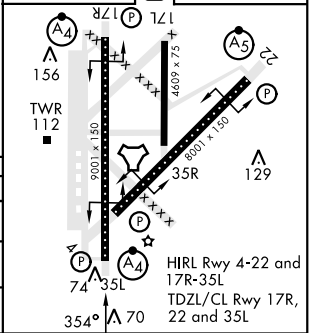


EMERG SAFE ALT 100 NM 16,000

500	3100	WATFO EFD 16	MARZY EFD 7 RADAR	PAHSU EFD 15 RADAR	KOREJ EFD 18
-----	------	--------------	-------------------	--------------------	--------------



ELEV 33	D	TDZE 28
---------	---	---------



CATEGORY	C	D	E
S-ILS 35L	228/40	200	(200-¾)
S-LOC 35L *	440/50	412	(500-1)
CIRCLING **	580-1½ 547 (600-1½)	640-2 607 (700-2)	700-2¼ 667 (700-2¼)

HOUSTON, TEXAS

29°36'N-95°10'W

ELLINGTON (KEFD)

Amdt 4A 15AUG19

HI-ILS Y or LOC Y RWY 35L

SC-5, 11 JUN 2026 to 09 JUL 2026

SC-5, 11 JUN 2026 to 09 JUL 2026