


LOC HLPV 110.3	APP CRS 174°	Rwy Ldg 9001
		TDZE 32
		Apt Elev 33

ILS Z or LOC Z RWY 17R

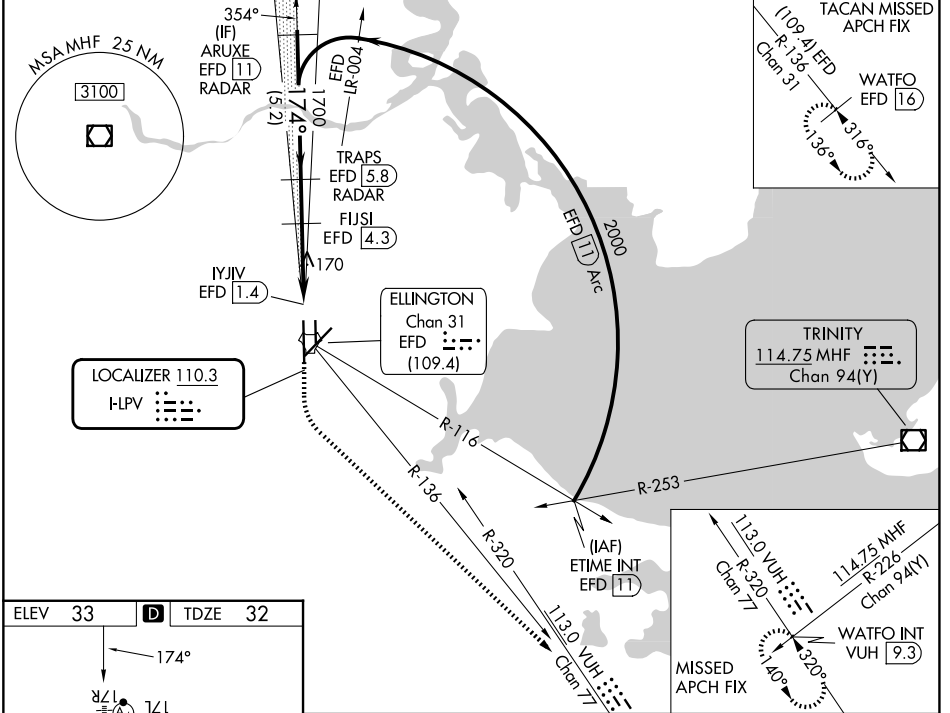
ELLINGTON (EFD)

DME required. RADAR required for procedure entry.

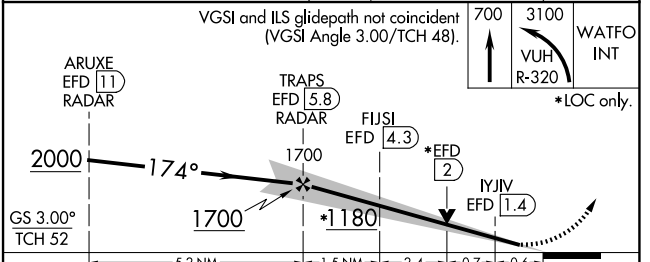
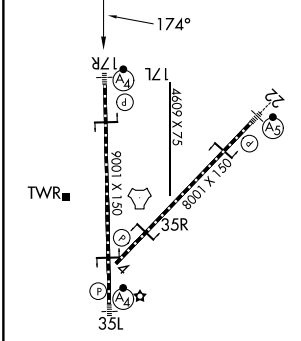
- ⚠ Circling NA west of Rwy 17R-35L. DME from EFD TACAN.
- ⚠ Simultaneous reception of HLPV and EFD DME required. Inop table does not apply to S-ILS 17R. For inop ALS, increase S-LOC 17R Cats C/D/E visibility to 1 3/8 SM.

MALSF
 MISSED APPROACH: Climb to 700 then climbing left turn to 3100 on VUH VOR/DME R-320 to WATFO INT/VUH 9.3 DME and hold (TACAN aircraft climb to 700 then climbing left turn to 3100 on EFD TACAN R-136 to WATFO INT/EFD 16 DME and hold southeast, left turn, 316° inbound).

ATIS 135.575 269.9	HOUSTON APP CON 134.45 284.0	ELLINGTON TOWER 126.05 253.5	GND CON 121.6 275.8
------------------------------	--	--	-------------------------------



ELEV 33	D	TDZE 32
---------	----------	---------



CATEGORY	A	B	C	D	E
S-ILS 17R	232/40		200 (200-3/4)		
S-LOC 17R	480/40	448 (500-3/4)	480/55	448 (500-1)	
CIRCLING	500-1	467 (500-1)	580-1 1/2 547 (600-1 1/2)	640-2 607 (700-2)	700-2 1/4 667 (700-2 1/4)

HOUSTON, TEXAS
 Amt 7 15AUG19

29°36'N-95°10'W

ELLINGTON (EFD) ILS Z or LOC Z RWY 17R

SC-5, 11 JUN 2026 to 09 JUL 2026

SC-5, 11 JUN 2026 to 09 JUL 2026