

KARRR SEVEN DEPARTURE (RNAV)
(KARRR7.KARRR) 29DEC22

ATIS
135.575 269.9
GND CON
121.6 275.8
ELLINGTON TOWER
126.05 253.5
HOUSTON DEP CON
134.45 284.0

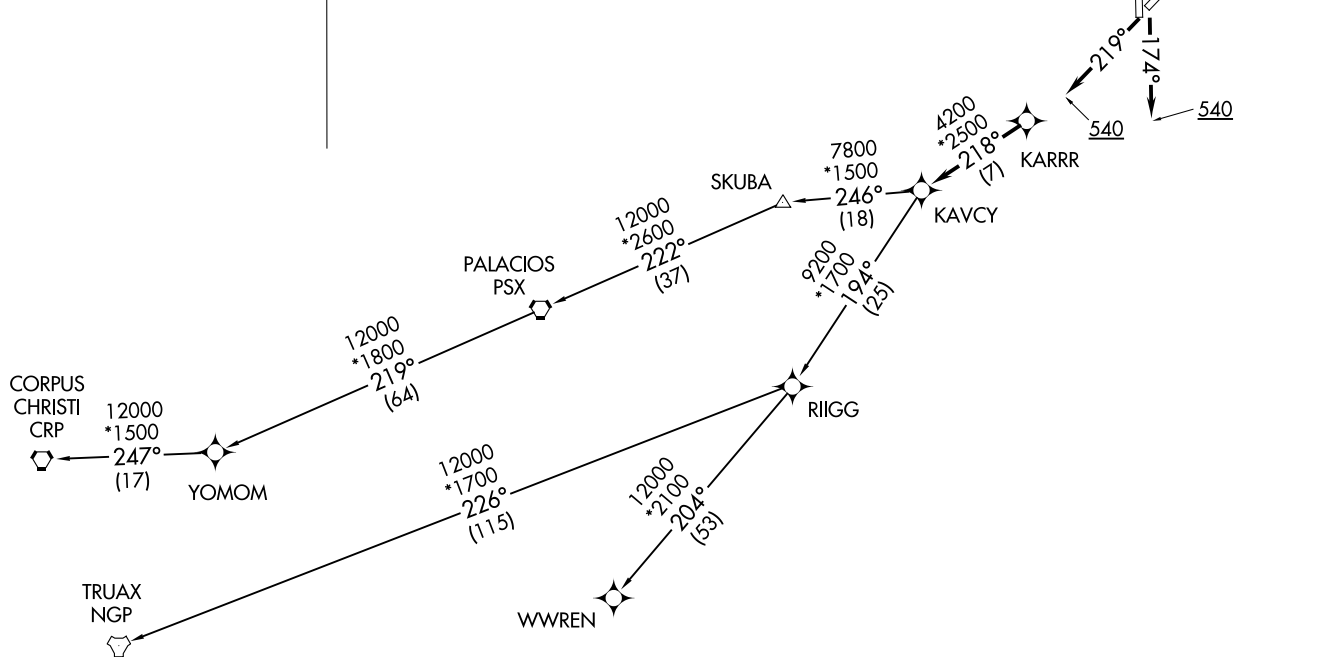
RNAV-1 DME/DME/IRU or GPS.
RADAR required.

**TOP ALTITUDE:
ASSIGNED BY ATC**

TAKEOFF MINIMUMS

Rwys 4, 17L/R, 22, 35L/R:

Standard with minimum climb of 500' per NM to 540.



(KARRR7.KARRR) 23222
KARRR SEVEN DEPARTURE (RNAV)

AL-197 (FAA)

ELLINGTON (EPTD)
HOUSTON, TEXAS

(NARRATIVE ON FOLLOWING PAGE)

NOTE: Chart not to scale.

HOUSTON, TEXAS
ELLINGTON (EPTD)

KARRR SEVEN DEPARTURE(RNAV)



DEPARTURE ROUTE DESCRIPTION

TAKEOFF RUNWAY 4: Climb on heading 039° to 540, for RADAR vectors to KARRR, thence. . . .

TAKEOFF RUNWAYS 17L/R: Climb on heading 174° to 540, for RADAR vectors to KARRR, thence. . . .

TAKEOFF RUNWAY 22: Climb on heading 219° to 540, for RADAR vectors to KARRR, thence. . . .

TAKEOFF RUNWAYS 35L/R: Climb on heading 354° to 540, for RADAR vectors to KARRR, thence. . . .

. . . .on track 218° to KAVCY, then on (transition). Maintain ATC assigned altitude. Expect filed altitude 10 minutes after departure.

CORPUS CHRISTI TRANSITION (KARRR7.CRP)

PALACIOS TRANSITION (KARRR7.PSX)

TRUAX TRANSITION (KARRR7.NGP)

WWREN TRANSITION (KARRR7.WWREN)

YOMOM TRANSITION (KARRR7.YOMOM)

SC-5, 11 JUN 2026 to 09 JUL 2026

SC-5, 11 JUN 2026 to 09 JUL 2026