

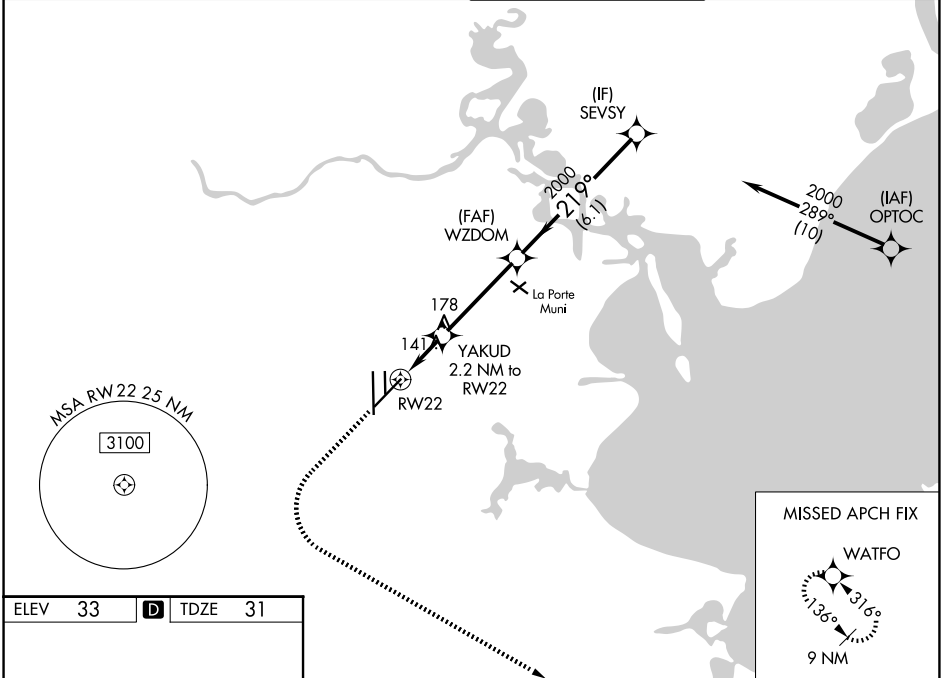
WAAS CH 61111	APP CRS 219°	Rwy Ldg 8001
W22A		TDZE 31
		Apt Elev 33

RNAV (GPS) RWY 22

ELLINGTON (EFD)

RNP APCH.	MALSRL	MISSED APPROACH: Climb to 500 then climbing left turn to 3100 direct WATFO and hold.
<p>⚠ Circling NA west of Rwy 17R - 35L. For uncompensated Baro-VNAV systems, LNAV/VNAV NA below -1.5°C or above 54°C. For inop ALS, increase LPV Cat E visibility to RVR 4000, LNAV/VNAV all Cats visibility to RVR 4500, and LNAV Cats C/D/E visibility to RVR 5500.</p>		

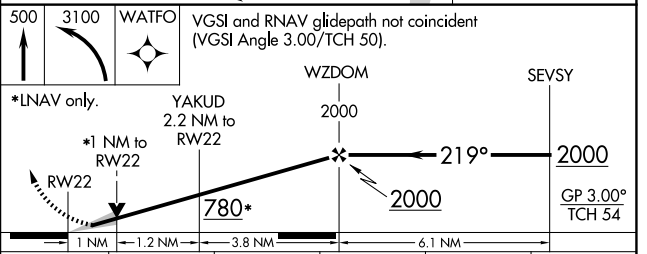
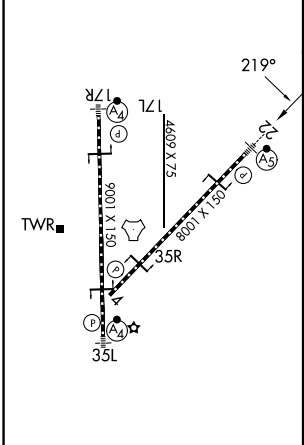
ATIS 135.575 269.9	HOUSTON APP CON 134.45 284.0	ELLINGTON TOWER 126.05 253.5	GND CON 121.6 275.8
------------------------------	--	--	-------------------------------



SC-5, 11 JUN 2026 to 09 JUL 2026

SC-5, 11 JUN 2026 to 09 JUL 2026

ELEV 33	D	TDZE 31
---------	----------	---------



		WZDOM	SEVSY		
		2000	2000		
		219°	2000		
		780*	2000		
		1 NM	1.2 NM	3.8 NM	6.1 NM
CATEGORY	A	B	C	D	E
LPV	DA	231/18		200 (200-1/2)	
LNAV/VNAV	DA	341/24		310 (400-1/2)	
LNAV MDA	400/24	369 (400-1/2)		400/35 369 (400-3/4)	
CIRCLING	500-1	467 (500-1)	580-1 1/2 547 (600-1 1/2)	640-2 607 (700-2)	700-2 1/4 667 (700-2 1/4)

HIRL Rwy 4-22 and 17R-35L
TDZ/CL Rwy 17R, 22 and 35L