

# EL DORADO ONE DEPARTURE

D-ATIS  
124.6  
CLNC DEL  
125.45  
CPDLC  
GND CON  
121.9  
HOBBY TOWER  
118.7 256.9  
HOUSTON DEP CON  
132.25 285.425

**TOP ALTITUDE:**  
**16000**

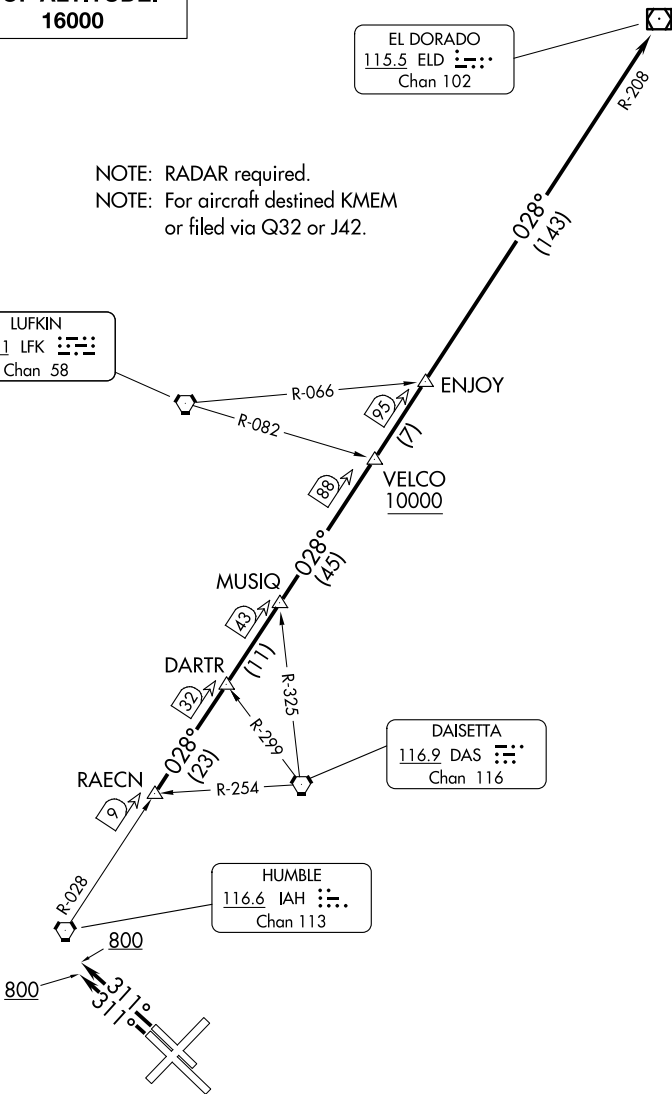
EL DORADO  
115.5 ELD :  
Chan 102

NOTE: RADAR required.  
NOTE: For aircraft destined KMEM  
or filed via Q32 or J42.

LUFKIN  
112.1 LFK :  
Chan 58

DAISETTA  
116.9 DAS :  
Chan 116

HUMBLE  
116.6 IAH :  
Chan 113



### TAKEOFF MINIMUMS

Rwys 4, 13L/R, 31L/R: Standard.  
Rwy 22: Standard with minimum climb of 290' per NM to 1500.

NOTE: Chart not to scale.

(CONTINUED ON FOLLOWING PAGE)

SC-5, 11 JUN 2026 to 09 JUL 2026

SC-5, 11 JUN 2026 to 09 JUL 2026

# EL DORADO ONE DEPARTURE



## DEPARTURE ROUTE DESCRIPTION

TAKEOFF RUNWAYS 4, 13L/R, 22: Climb on assigned heading for RADAR vectors to RAECN INT, maintain 16000, expect filed altitude 10 minutes after departure, thence. . . .

TAKEOFF RUNWAYS 31L/R: Climb on heading 311° to 800 before turning, then climb on assigned heading for RADAR vectors to RAECN INT, maintain 16000, expect filed altitude 10 minutes after departure, thence. . . .

. . . .on IAH R-028 and the ELD R-208 to ELD VOR/DME, cross VELCO INT at or above 10000.

SC-5, 11 JUN 2026 to 09 JUL 2026

SC-5, 11 JUN 2026 to 09 JUL 2026