

ELOCO SIX DEPARTURE (RNAV)

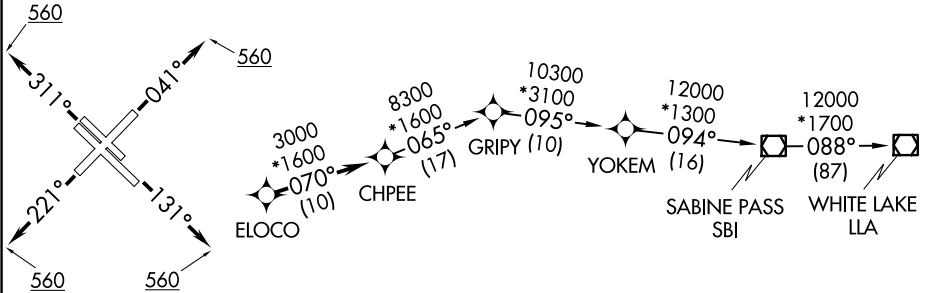
**TOP ALTITUDE:
16000**

TAKEOFF MINIMUMS

Rwys 4, 13L/R, 22, 31L/R:

Standard with minimum climb of 500' per NM to 560.

D-ATIS 124.6
CLNC DEL 125.45
CPDLC
GND CON 121.9
HOBBY TOWER 118.7 256.9
HOUSTON DEP CON 127.125 269.075 281.4



- NOTE: DME/DME/IRU or GPS required.
- NOTE: RADAR required.
- NOTE: RNAV 1.

NOTE: Chart not to scale.



DEPARTURE ROUTE DESCRIPTION

TAKEOFF RUNWAY 4: Climb on heading 041° to 560, expect RADAR vectors to ELOCO, thence

TAKEOFF RUNWAYS 13L/R: Climb on heading 131° to 560, expect RADAR vectors to ELOCO, thence

TAKEOFF RUNWAY 22: Climb on heading 221° to 560, expect RADAR vectors to ELOCO, thence

TAKEOFF RUNWAYS 31L/R: Climb on heading 311° to 560, expect RADAR vectors to ELOCO, thence

. . . . on track 070° to CHPEE, then on (transition). Maintain 16000, expect filed altitude 10 minutes after departure.

WHITE LAKE TRANSITION (ELOCO6.LLA)

SC-5, 11 JUN 2026 to 09 JUL 2026

SC-5, 11 JUN 2026 to 09 JUL 2026