

GIFFA ONE DEPARTURE

AL-198 (FAA)

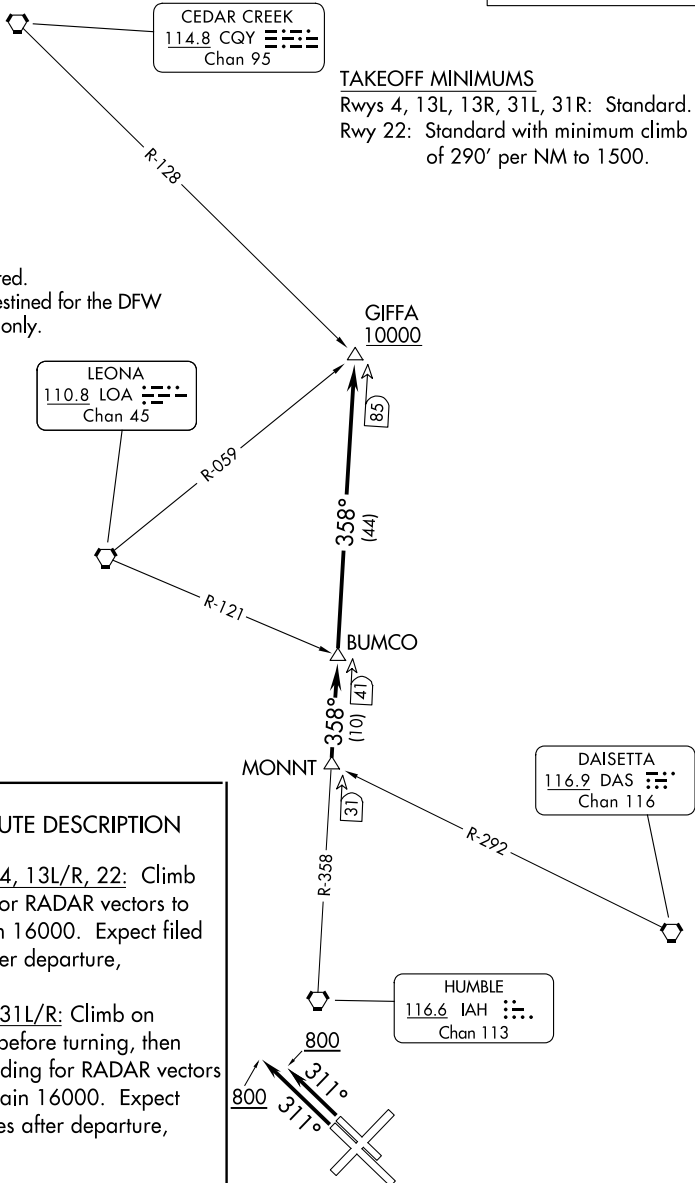
WILLIAM P HOBBY (HOU)
HOUSTON, TEXAS

**TOP ALTITUDE:
16000**

D-ATIS
124.6
CLNC DEL
125.45
CPDLC
GND CON
121.9
HOBBY TOWER
118.7 256.9
HOUSTON DEP CON
132.25 285.425

TAKEOFF MINIMUMS
Rwys 4, 13L, 13R, 31L, 31R: Standard.
Rwy 22: Standard with minimum climb
of 290' per NM to 1500.

NOTE: RADAR required.
NOTE: For aircraft destined for the DFW
terminal area only.



DEPARTURE ROUTE DESCRIPTION

TAKEOFF RUNWAYS 4, 13L/R, 22: Climb on assigned heading for RADAR vectors to MONNT INT, maintain 16000. Expect filed altitude 10 minutes after departure, thence

TAKEOFF RUNWAYS 31L/R: Climb on heading 311° to 800 before turning, then climb on assigned heading for RADAR vectors to MONNT INT, maintain 16000. Expect filed altitude 10 minutes after departure, thence

. . . . on IAH R-358 to cross GIFFA INT at or above 10000.

NOTE: Chart not to scale.

GIFFA ONE DEPARTURE

(GIFFA1.GIFFA) 07OCT21

HOUSTON, TEXAS
WILLIAM P HOBBY (HOU)

SC-5, 11 JUN 2026 to 09 JUL 2026

SC-5, 11 JUN 2026 to 09 JUL 2026