

LOC/DME I-HUB 109.9 Chan 36	APP CRS 041°	Rwy Ldg 7602 TDZE 44 Apt Elev 46
-------------------------------------------------	------------------------	-------------------------------------------------------------

ILS RWY 4 (CAT II & III)

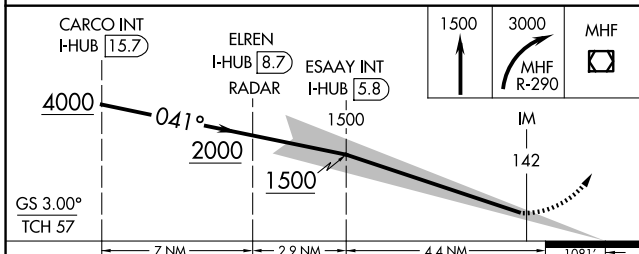
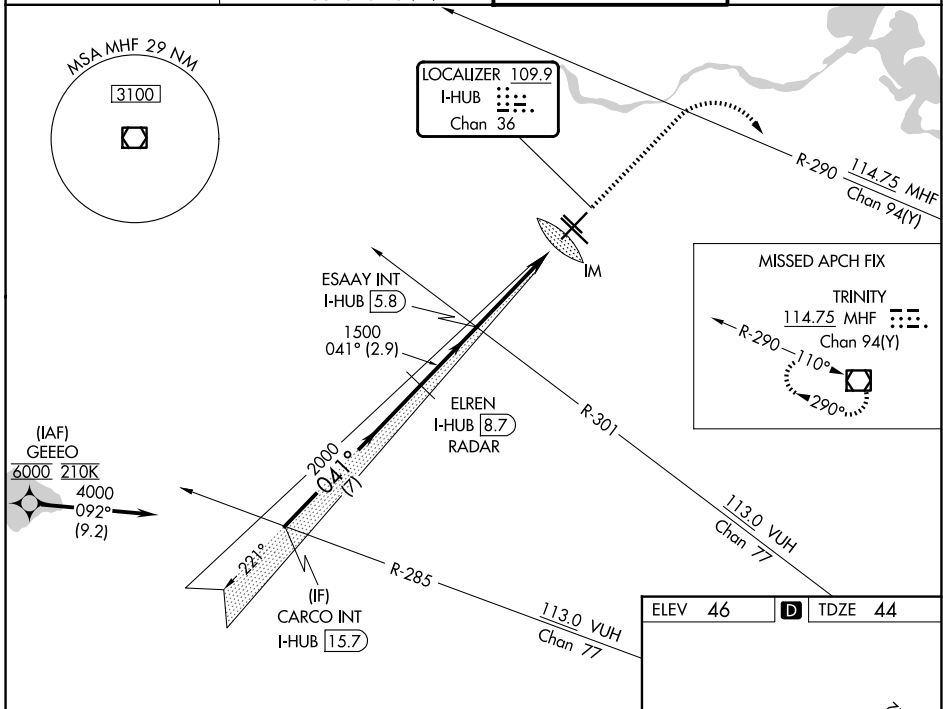
WILLIAM P HOBBY (HOU)

Aircraft not GPS equipped - RADAR required for procedure entry.
From GEEEO: RNAV 1- GPS required.

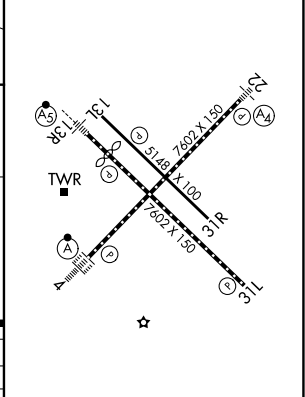
ALSF-2 MISSED APPROACH: Climb to 1500 then climbing right turn to 3000 on MHF VOR/DME R-290 to MHF VOR/DME and hold.

CAT II: RVR 1000 authorized with specific OPSPEC, MSPEC, or LOA approval and use of autoland or HUD to touchdown.

D-ATIS 124.6	HOUSTON APP CON 120.05 379.1 (E) 124.35 316.15 (W)	HOBBY TOWER 118.7 256.9	GND CON 121.9
------------------------	------------------------------------------------------------------------	-----------------------------------	-------------------------



ELEV 46	D TDZE 44
---------	------------------



CATEGORY	A	B	C	D
S-ILS 4	CAT II RA 100/12 100 DA 144			
S-ILS 4	CAT III RVR 06			

CATEGORY II & III ILS - SPECIAL AIRCREW & AIRCRAFT CERTIFICATION REQUIRED

REIL Rwy 31L
MIRL Rwy 13L-31R
HIRL Rwy 4-22 and 13R-31L
TDZL/RCLS Rwy 4, 13R and 31L

SC-5, 11 JUN 2026 to 09 JUL 2026

SC-5, 11 JUN 2026 to 09 JUL 2026