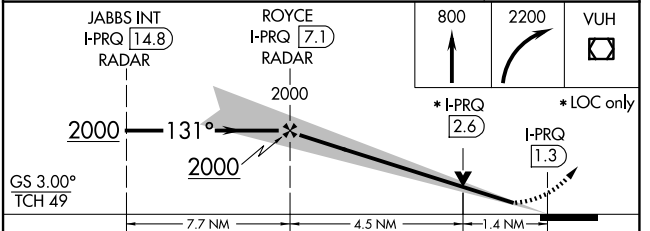
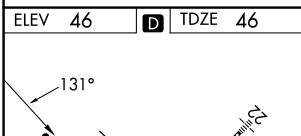
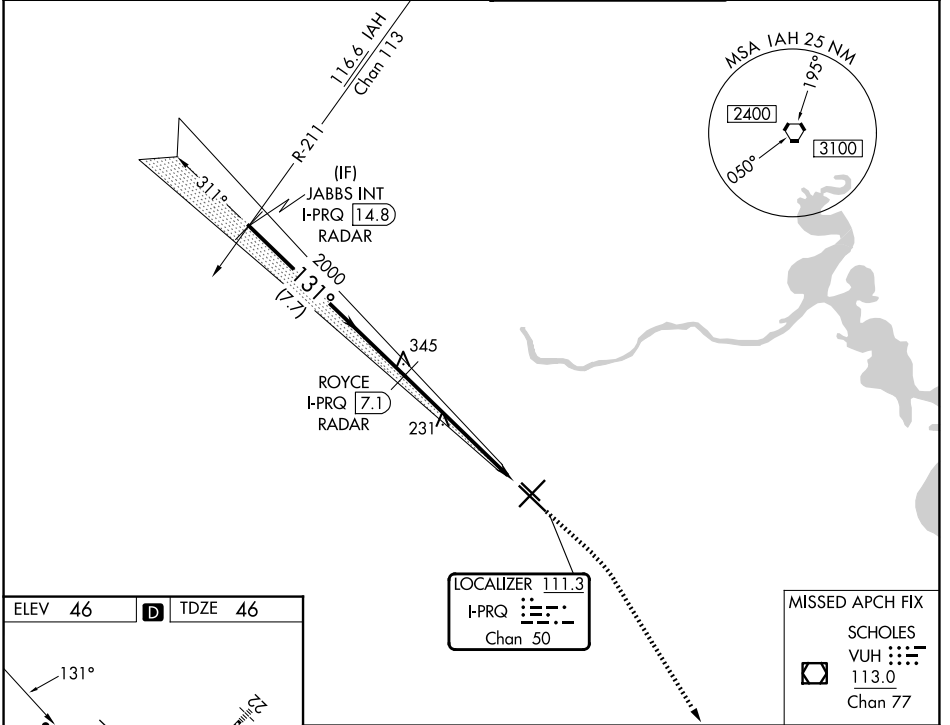


LOC/DME I-PRQ <b>111.3</b> Chan <b>50</b>	APP CRS <b>131°</b>	Rwy Ldg <b>6568</b> TDZE <b>46</b> Apt Elev <b>46</b>
---	------------------------	---

# ILS or LOC RWY 13R

WILLIAM P HOBBY (HOU)

RADAR or DME required for LOC only. RADAR required for procedure entry.		MALS R	MISSED APPROACH: Climb to 800 then climbing right turn to 2200 direct VUH VOR/DME.
<p>▼ Inop table does not apply to S-ILS Rwy 13R. Rwy 13R helicopter visibility reduction below 3/4 SM NA. For inop ALS, increase S-LOC 13R Cats A/B visibility to RVR 5500, Cats C/D/E to 1 3/4 SM.</p> <p>▲</p>			
D-ATIS <b>124.6</b>	HOUSTON APP CON <b>120.05 379.1 (E)</b> <b>124.35 316.15 (W)</b>	HOBBY TOWER <b>118.7 256.9</b>	GND CON <b>121.9</b>



REIL Rwy 31L  
MIRL Rwy 13L-31R  
HIRL Rwy 4-22 and 13R-31L  
TDZL/RCLS Rwy 4, 13R and 31L  
FAF to MAP 5.9 NM

Knots	60	90	120	150	180
Min:Sec	5:54	3:56	2:57	2:22	1:58

CATEGORY	A	B	C	D	E
S-ILS 13R	296/40 250 (300-3/4)				
S-LOC 13R	540/40	494 (500-3/4)	540/50	494 (500-1)	540/60 494 (500-1 1/4)
CIRCLING	540-1	494 (500-1)	740-2 1/4	694 (700-2 1/4)	860-3 814 (900-3)

SC-5, 11 JUN 2026 to 09 JUL 2026

SC-5, 11 JUN 2026 to 09 JUL 2026