

WAAS CH 70310 W13A	APP CRS 131°	Rwy Ldg 6568 TDZE 46 Apt Elev 46
----------------------------------------	------------------------	-------------------------------------------------------------

RNAV (GPS) RWY 13R

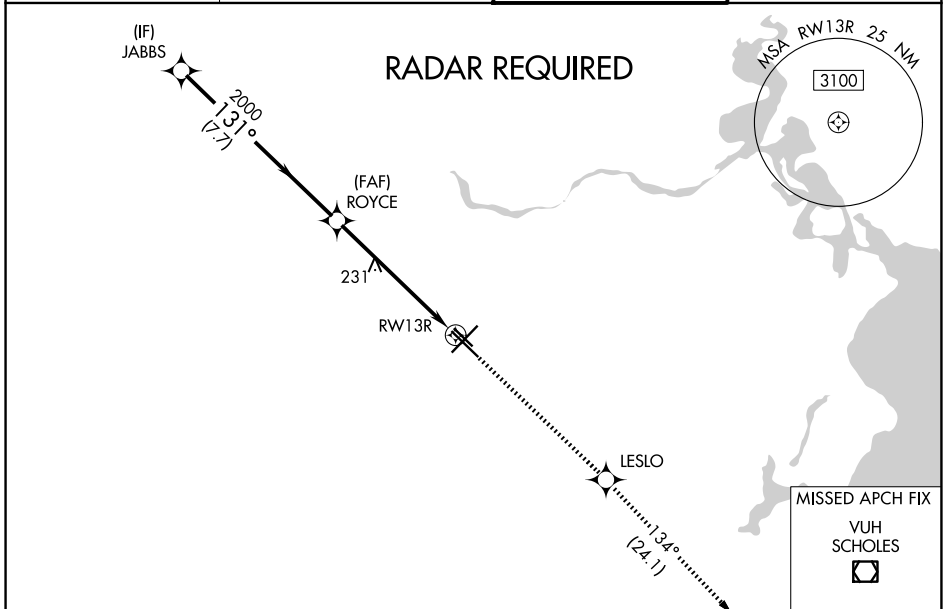
WILLIAM P HOBBY (HOU)

▽ For uncompensated Baro-VNAV systems, LNAV/VNAV NA below -15°C or above 54°C. DME/DME RNP-0.3 NA. For inop ALS, increase LPV all Cats visibility to RVR 5000; increase LNAV/VNAV Cats A/B/C/D visibility to 1 $\frac{3}{4}$ SM, Cat E to 1 $\frac{1}{2}$ SM; and increase LNAV Cats A/B visibility to RVR 5500, Cats C/D to 1 $\frac{3}{4}$ SM, Cat E to 1 $\frac{3}{4}$ SM. Rwy 13R helicopter visibility reduction below $\frac{3}{4}$ SM NA.



MISSED APPROACH: Climb to 2200 direct LESLO and on track 134° to VUH VOR/DME.

D-ATIS 124.6	HOUSTON APP CON 120.05 379.1 (E) 124.35 316.15 (W)	HOBBY TOWER 118.7 256.9	GND CON 121.9
------------------------	------------------------------------------------------------------------	-----------------------------------	-------------------------



ELEV 46		D TDZE 46			
JABBS	ROYCE	2200	LESLO	tr 134°	VUH
2000	2000	2000			
GP 3.00° TCH 49		*1.4 NM to RWY 13R *LNAV only			
7.7 NM		4.5 NM		1.4 NM	
CATEGORY	A	B	C	D	E
LPV DA	330/40		284 (300- $\frac{3}{4}$)		
LNAV/VNAV DA	475/50		429 (500-1)		
LNAV MDA	540/40	494 (500- $\frac{3}{4}$)	540/50	494 (500-1)	540/60 494 (500-1 $\frac{1}{4}$)
CIRCLING	540-1	494 (500-1)	740-2 $\frac{1}{4}$	694 (700-2 $\frac{1}{4}$)	860-3 814 (900-3)

REIL Rwy 31L
MIRL Rwy 13L-31R
HIRL Rwys 4-22 and 13R-31L
TDZL/RCLS Rwys 4, 13R and 31L

SC-5, 11 JUN 2026 to 09 JUL 2026

SC-5, 11 JUN 2026 to 09 JUL 2026