

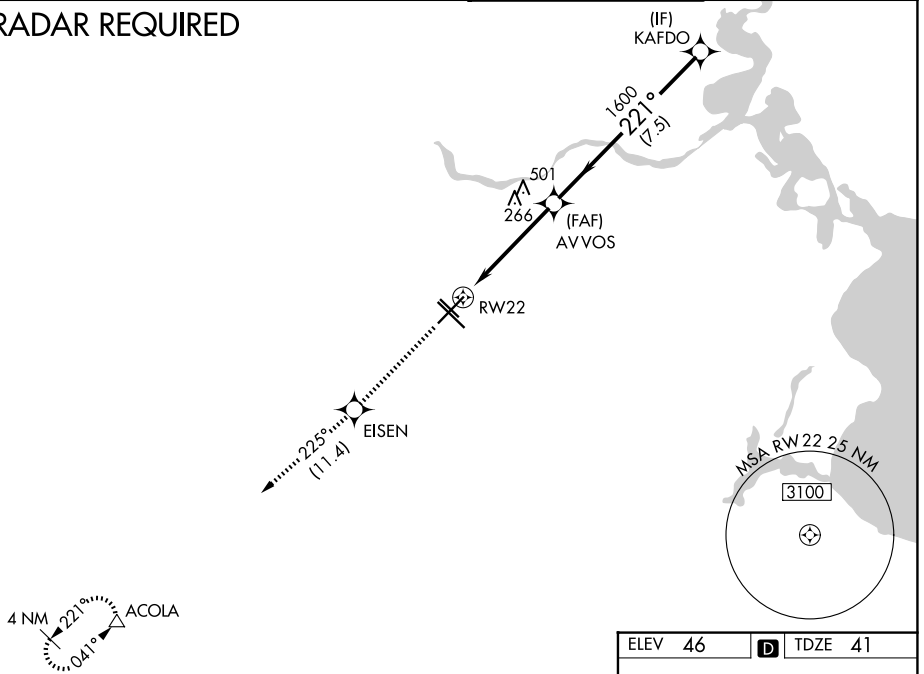
WAAS CH <b>65610</b> <b>W22A</b>	APP CRS <b>221°</b>	Rwy Ldg <b>7602</b> TDZE <b>41</b> Apt Elev <b>46</b>
--	------------------------	---

# RNAV (GPS) RWY 22

WILLIAM P HOBBY (HOU)

RNP APCH		MALS	MISSED APPROACH: Climb to 3000 direct EISEN and on track 225° to ACOLA and hold.
<p>▼ Inop table does not apply to LPV, LNAV/VNAV all Cats, and LNAV Cat C. For uncompensated Baro-VNAV systems, LNAV/VNAV NA below -15°C (5°F) or above 48°C (118°F).</p> <p>▲</p>		(A)	
D-ATIS <b>124.6</b>	HOUSTON APP CON <b>120.05 379.1 (E)</b> <b>124.35 316.15 (W)</b>	HOBBY TOWER <b>118.7 256.9</b>	GND CON <b>121.9</b>

## RADAR REQUIRED



SC-5, 11 JUN 2026 to 09 JUL 2026

SC-5, 11 JUN 2026 to 09 JUL 2026

