

WAAS CH <b>77510</b> <b>W31A</b>	APP CRS <b>311°</b>	Rwy Ldg <b>7602</b> TDZE <b>43</b> Apt Elev <b>46</b>
--	------------------------	---

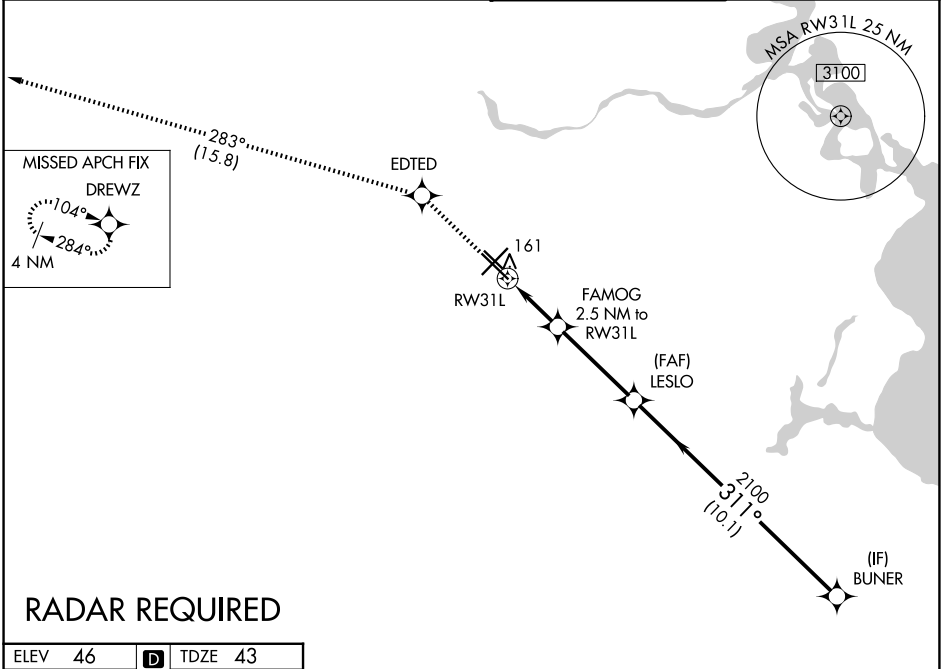
# RNAV (GPS) RWY 31L

WILLIAM P HOBBY (HOU)

**⚠** For uncompensated Baro-VNAV systems, LNAV/VNAV NA below -1.5°C (5°F) or above 43°C (109°F).  
DME/DME RNP-0.3 NA.

MISSED APPROACH: Climb to 2000 direct EDTED and on track 283° to DREWZ and hold.

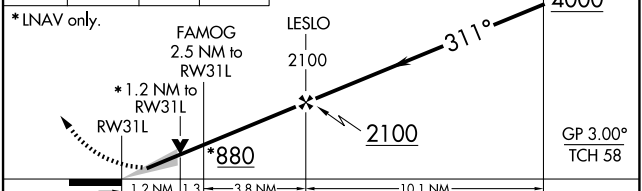
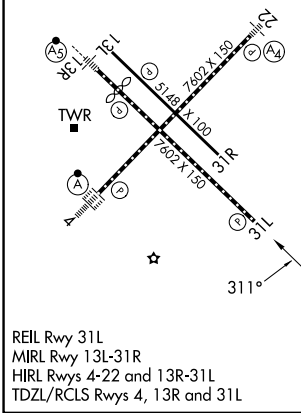
D-ATIS <b>124.6</b>	HOUSTON APP CON <b>120.05 379.1 (E)</b> <b>124.35 316.15(W)</b>	HOBBY TOWER <b>118.7 256.9</b>	GND CON <b>121.9</b>
------------------------	---	-----------------------------------	-------------------------



## RADAR REQUIRED

ELEV 46	<b>D</b>	TDZE 43
---------	----------	---------

2000	EDTED	DREWZ	BUNER
↑	✦	tr 283°	✦
*LNAV only.			VGSI and RNAV glidepath not coincident (VGSI Angle 3.00/TCH 76).



CATEGORY	A	B	C	D
LPV DA		243/40	200 (200-¾)	
LNAV/VNAV DA		323/45	280 (300-⅞)	
LNAV MDA	500/55	457 (500-1)	500-1⅜	457 (500-1⅜)
CIRCLING	500-1 454 (500-1)	520-1 474 (500-1)	740-2¼	694 (700-2¼)

SC-5, 11 JUN 2026 to 09 JUL 2026

SC-5, 11 JUN 2026 to 09 JUL 2026