

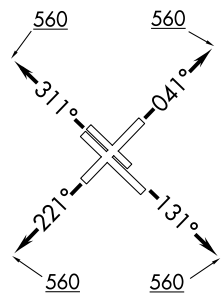
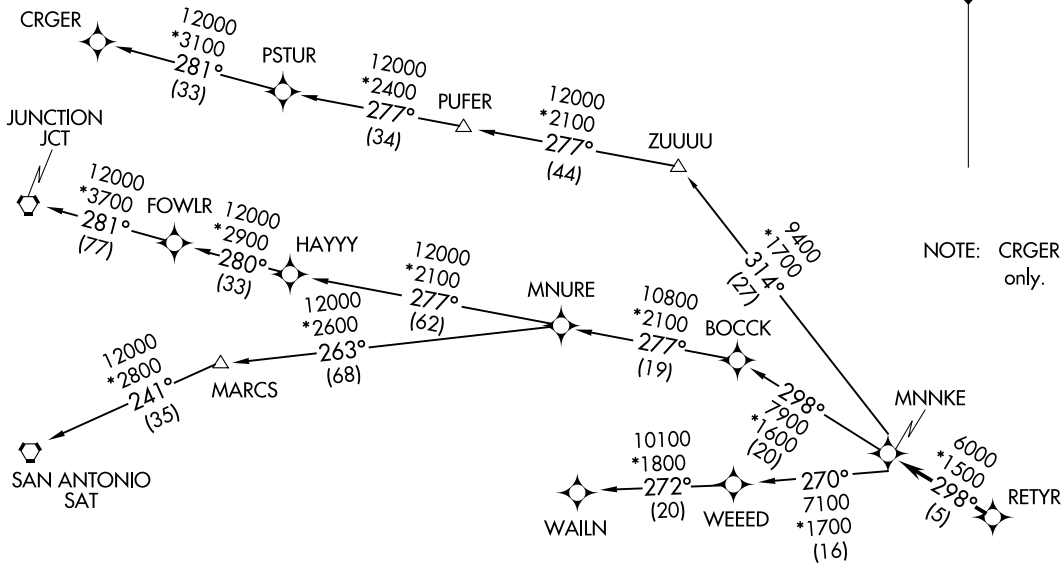
RNAV 1 - DME/DME/IRU or GPS.
RADAR required.

**TOP ALTITUDE:
16000**

D-ATIS 124.6
CLNC DEL 125.45
CPDLC 121.9
GND CON 121.9
HOBBY TOWER 118.7 256.9
HOUSTON DEP CON 126.675 339.8



NOTE: CRGER Transition ATC assigned only.



TAKEOFF MINIMUMS

Rwys 4, 13L/R, 31L/R: Standard with minimum climb of 500' per NM to 560.
Rwy 22: Standard with minimum climb of 500' per NM to 800.

NOTE: Chart not to scale.

(CONTINUED ON FOLLOWING PAGE)

RETRYR EIGHT DEPARTURE (RNAV)
(RETRYR8, RETYR) 03NOV22

HOUSTON, TEXAS
WILLIAM P HOBBY (HIOU)

(RETRYR8, RETYR) 25051
RETRYR EIGHT DEPARTURE (RNAV)

AL-198 (FAA)

HOUSTON, TEXAS
WILLIAM P HOBBY (HIOU)

RETYR EIGHT DEPARTURE (RNAV)



DEPARTURE ROUTE DESCRIPTION

TAKEOFF RUNWAY 4: Climb on heading 041° to 560, expect RADAR vectors to RETYR, thence

TAKEOFF RUNWAYS 13L/R: Climb on heading 131° to 560, expect RADAR vectors to RETYR, thence

TAKEOFF RUNWAY 22: Climb on heading 221° to 560, expect RADAR vectors to RETYR, thence

TAKEOFF RUNWAYS 31L/R: Climb on heading 311° to 560, expect RADAR vectors to RETYR, thence

. . . . on track 298° to MNNKE, then on (transition). Maintain 16000, expect filed altitude 10 minutes after departure.

CRGER TRANSITION (RETYR8.CRGER)

JUNCTION TRANSITION (RETYR8.JCT)

MNURE TRANSITION (RETYR8.MNURE)

SAN ANTONIO TRANSITION (RETYR8.SAT)

WAILN TRANSITION (RETYR8.WAILN)

SC-5, 11 JUN 2026 to 09 JUL 2026

SC-5, 11 JUN 2026 to 09 JUL 2026