

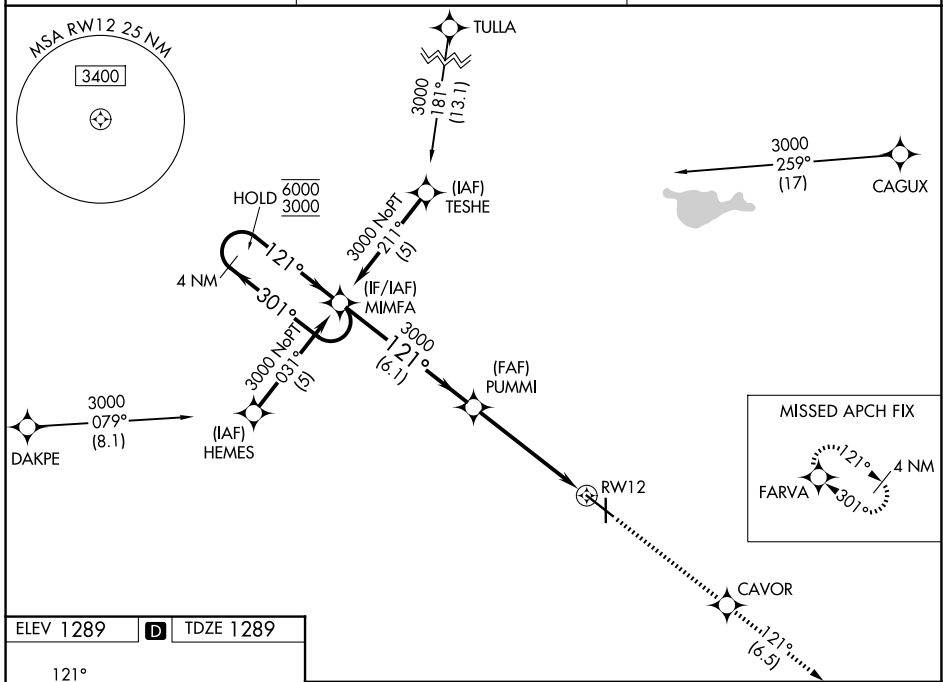
WAAS CH <b>70314</b> <b>W12A</b>	APP CRS <b>121°</b>	Rwy Ldg TDZE Apt Elev	<b>7201</b> <b>1289</b> <b>1289</b>
--	------------------------	-----------------------------	---

# RNAV (GPS) RWY 12

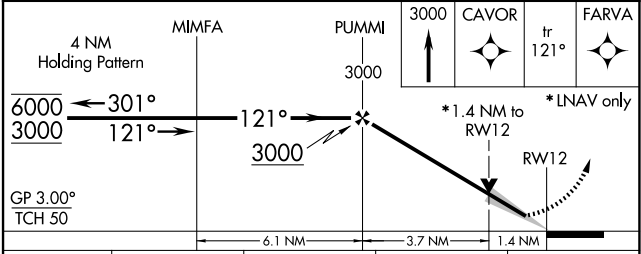
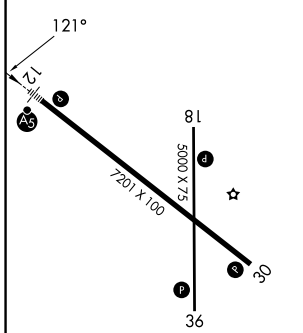
HURON RGNL (HON)

RNP APCH.	MALSR	MISSED APPROACH: Climb to 3000 direct CAVOR and on track 121° to FARVA and hold.
<p>⚠ Circling Rwy 18, 36 NA at night. For uncompensated Baro-VNAV systems, LNAV/VNAV NA below -17°C or above 54°C. For inop ALS, increase LNAV/VNAV all CATs visibility to 1½ SM and LNAV Cat C/D to 1¾ SM.</p>		

ASOS <b>118.125</b>	MINNEAPOLIS CENTER <b>126.25 339.8</b>	UNICOM <b>123.0 (CTAF) 0</b>
------------------------	---	---------------------------------



ELEV 1289	<b>D</b>	TDZE 1289
-----------	----------	-----------



CATEGORY	A	B	C	D
LPV DA	1489-½ 200 (200-½)			
LNAV/VNAV DA	1699-¾ 410 (500-¾)			
LNAV MDA	1780-½	491 (500-½)	1780-1	491 (500-1)
CIRCLING	1820-1	531 (600-1)	1920-1¾ 631 (700-1¾)	1980-2¼ 691 (700-2¼)

HIRL Rwy 12-30  
MIRL Rwy 18-36  
REIL Rwy 18, 30 and 36

NC-1, 11 JUN 2026 to 09 JUL 2026

NC-1, 11 JUN 2026 to 09 JUL 2026