

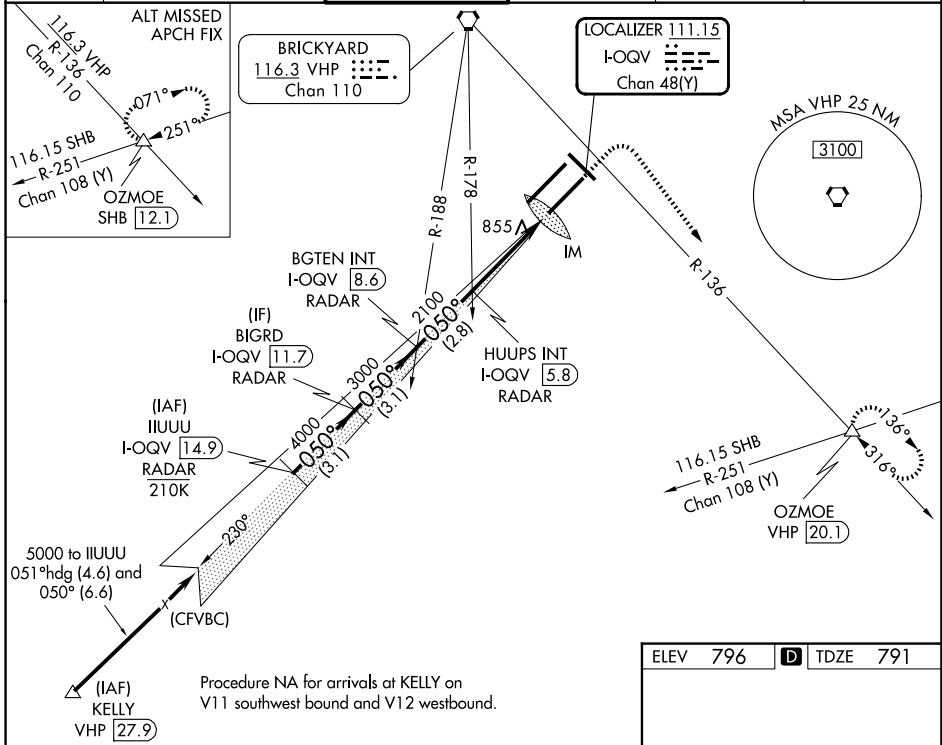
LOC/DME I-QQV 111.15 Chan 48(Y)	APP CRS 050°	Rwy Ldg 10000
		TDZE 791
		Apt Elev 796

ILS RWY 5R (SA CAT I)

INDIANAPOLIS INTL (IND)

<p>▼ DME or RADAR required. Simultaneous approach authorized. Requires specific OPSPEC, MSPEC, or LOA approval and use of HUD to DH.</p> <p>▲ ALSF-2</p>	<p>MISSED APPROACH: Climb to 1500 then climbing right turn to 3000 on heading 148° and on VHP VORTAC R-136 to OZMOE INT/VHP 20.1 DME and hold.</p>
--	--

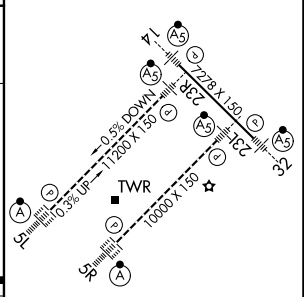
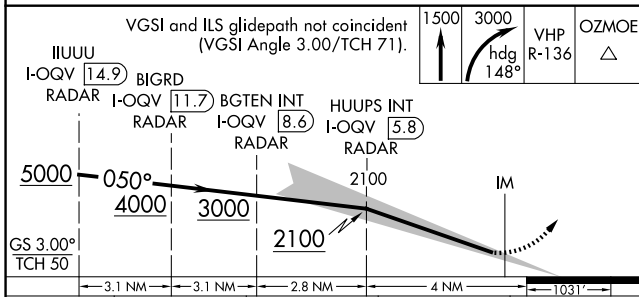
D-ATIS 134.25	INDIANAPOLIS APP CON 128.175 317.8	INDY TOWER 120.9 251.1	GND CON 121.9	CLNC DEL 128.75 251.1	CPDLC
-------------------------	--	----------------------------------	-------------------------	---------------------------------	-------



EC-2, 11 JUN 2026 to 09 JUL 2026

EC-2, 11 JUN 2026 to 09 JUL 2026

ELEV 796	D TDZE 791
----------	-------------------



CATEGORY	A	B	C	D
S-ILS 5R	RA 163/14 150 DA 941			

SA CATEGORY I ILS SPECIAL AIRCREW & AIRCRAFT CERTIFICATION REQUIRED

HIRL all Rwys
TDZ/CL Rwys 5L and 5R