

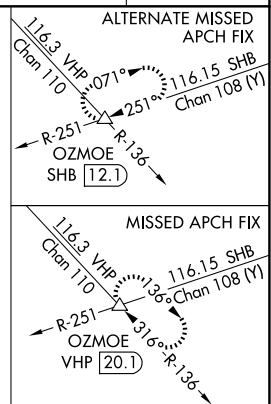
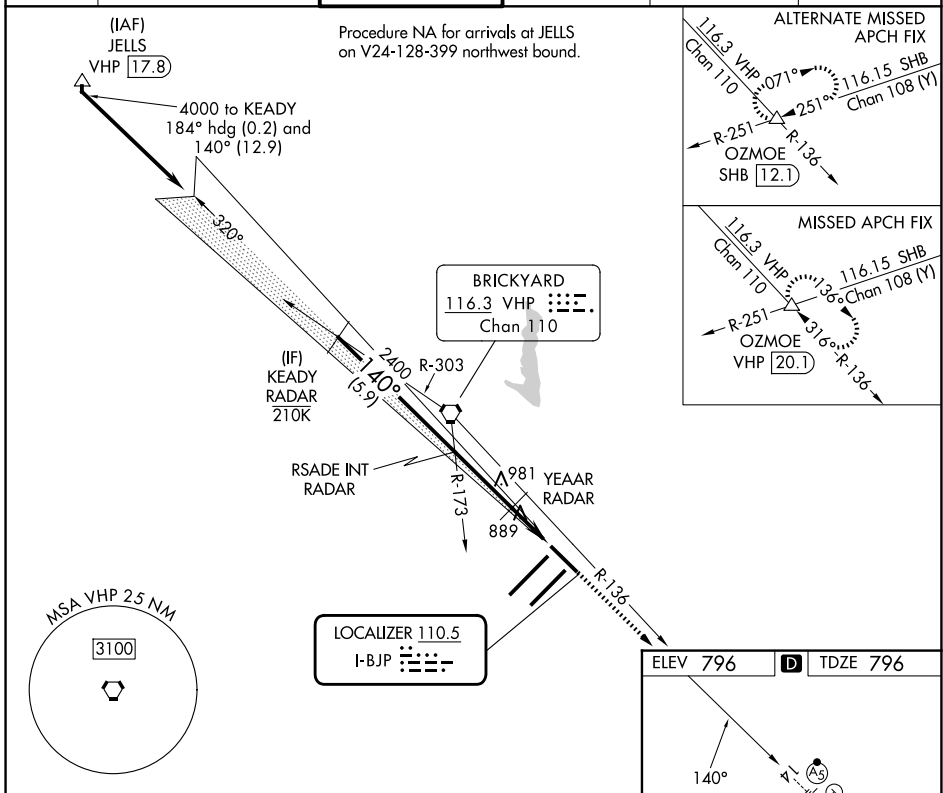
LOC I-BJP <b>110.5</b>	APP CRS <b>140°</b>	Rwy Ldg <b>7278</b> TDZE <b>796</b> Apt Elev <b>796</b>
---------------------------	------------------------	---

# ILS or LOC RWY 14

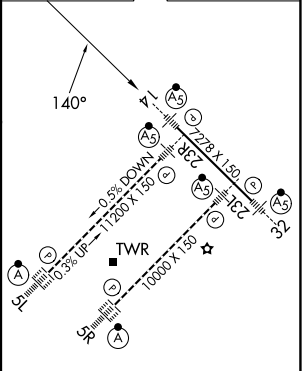
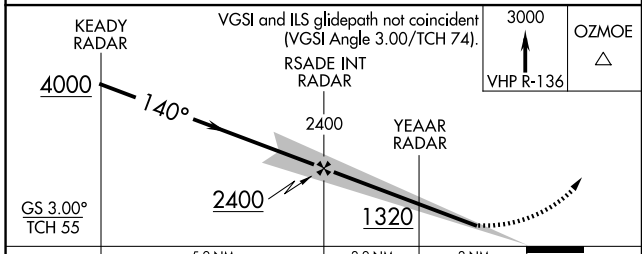
INDIANAPOLIS INTL (IND)

RADAR required.		MALSR	MISSED APPROACH: Climb to 3000 on VHP R-136 to OZMOE INT/VHP 20.1 DME and hold.
<p>▼ For inop ALS, increase S-LOC 14 Cat C and D visibility to RVR 5500.</p> <p>▲ *RVR 1800 authorized with use of FD or AP or HUD to DA.</p>			

D-ATIS <b>134.25</b>	INDIANAPOLIS APP CON <b>128.175 317.8</b>	INDY TOWER <b>120.9 251.1</b>	GND CON <b>121.9</b>	CLNC DEL <b>128.75 251.1</b>	CPDLC
-------------------------	--	----------------------------------	-------------------------	---------------------------------	-------



ELEV 796	D	TDZE 796
----------	---	----------



CATEGORY	A	B	C	D
S-ILS 14 *	996/24 200 (200-½)			
S-LOC 14	1140/24	344 (400-½)	1140/30	344 (400-¾)
CIRCLING	1420-1 624 (700-1)		1420-1¾ 624 (700-1¾)	1560-2½ 764 (800-2½)

HIRL all Rwy's	TDZ/CL Rwy's 5L and 5R				
FAF to MAP 4.9 NM					
Knots	60	90	120	150	180
Min:Sec	4:54	3:16	2:27	1:58	1:38

EC-2, 11 JUN 2026 to 09 JUL 2026

EC-2, 11 JUN 2026 to 09 JUL 2026