

# MEARZ SEVEN DEPARTURE

INDIANAPOLIS, INDIANA

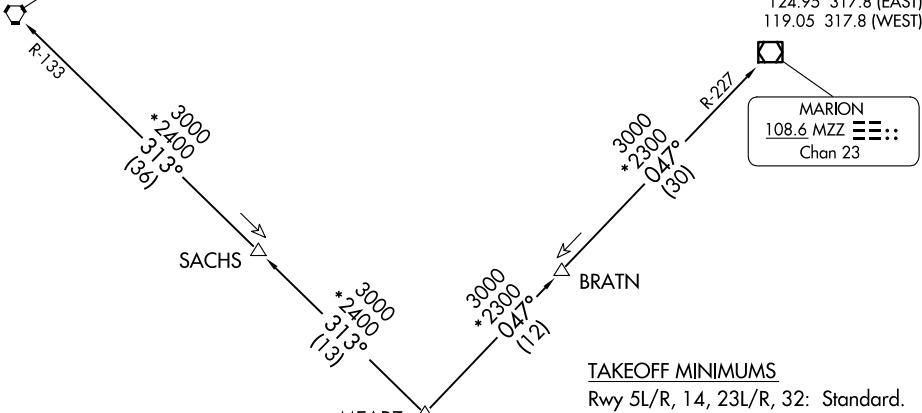
**TOP ALTITUDE:**  
**(JETS) 5000**  
**(PROPS) 3000**

RADAR required.

D-ATIS 134.25  
CLNC DEL  
128.75 251.1  
CPDLC  
GND CON  
121.9  
INDY TOWER  
120.9 251.1  
INDIANAPOLIS DEP CON  
124.95 317.8 (EAST)  
119.05 317.8 (WEST)

BOILER  
115.1 BVT  
Chan 98

MARION  
108.6 MZZ  
Chan 23



### TAKEOFF MINIMUMS

Rwy 5L/R, 14, 23L/R, 32: Standard.

- NOTE: Turbojets accelerate to 250K until reaching 10000, if unable advise ATC.
- NOTE: Assigned to aircraft with a requested altitude of 11000 or above.
- NOTE: Select appropriate localizer/DME frequency/channel prior to departure.

BRICKYARD  
116.3 VHP  
Chan 110

LOCALIZER  
111.75 I-UZK  
Chan 54(Y)

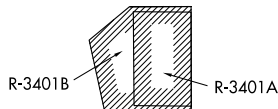
I-OQV  
0.3

LOCALIZER  
111.15 I-OQV  
Chan 48(Y)

I-UZK  
2.6

I-FVJ  
2.3

LOCALIZER  
111.15 I-FVJ  
Chan 48(Y)



NOTE: Chart not to scale.

(NARRATIVE ON FOLLOWING PAGE)

EC-2, 11 JUN 2026 to 09 JUL 2026

EC-2, 11 JUN 2026 to 09 JUL 2026



DEPARTURE ROUTE DESCRIPTION

TAKEOFF RUNWAY 5R (TURBOJETS ONLY-DME REQUIRED): Climb on heading 050° to I-OQV 0.3 DME, then on assigned heading 050° or 070°. Maintain 5000.

Thence....

TAKEOFF RUNWAY 23R (TURBOJETS ONLY-DME REQUIRED): Climb on heading 230° to I-UZK 2.6 DME, then on assigned heading 230° or 215°. Maintain 5000.

Thence....

TAKEOFF RUNWAY 23L (TURBOJETS ONLY-DME REQUIRED): Climb on heading 230° to I-FVJ 2.3 DME, then on assigned heading 210°, 230°, or 245°. Maintain 5000.

Thence....

TAKEOFF ALL OTHER RUNWAYS (TURBOJETS ONLY): Climb on assigned heading. Maintain 5000. Thence....

TAKEOFF ALL RUNWAYS (PROPELLER ONLY): Climb on assigned heading. Maintain 3000. Thence....

DEPARTING ALL OTHER AUTHORIZED RUNWAYS: Climb on assigned heading to assigned altitude. Thence....

....expect RADAR vectors to join VHP R-013 to MEARZ then on transition or assigned route. Expect clearance to requested altitude ten minutes after departure.

BOILER TRANSITION (MEARZ.BVT): From over MEARZ on BVT R-133 to BVT VORTAC.

MARION TRANSITION (MEARZ.MZZ): From over MEARZ on MZZ R-227 to MZZ VOR/DME.

EC-2, 11 JUN 2026 to 09 JUL 2026

EC-2, 11 JUN 2026 to 09 JUL 2026