

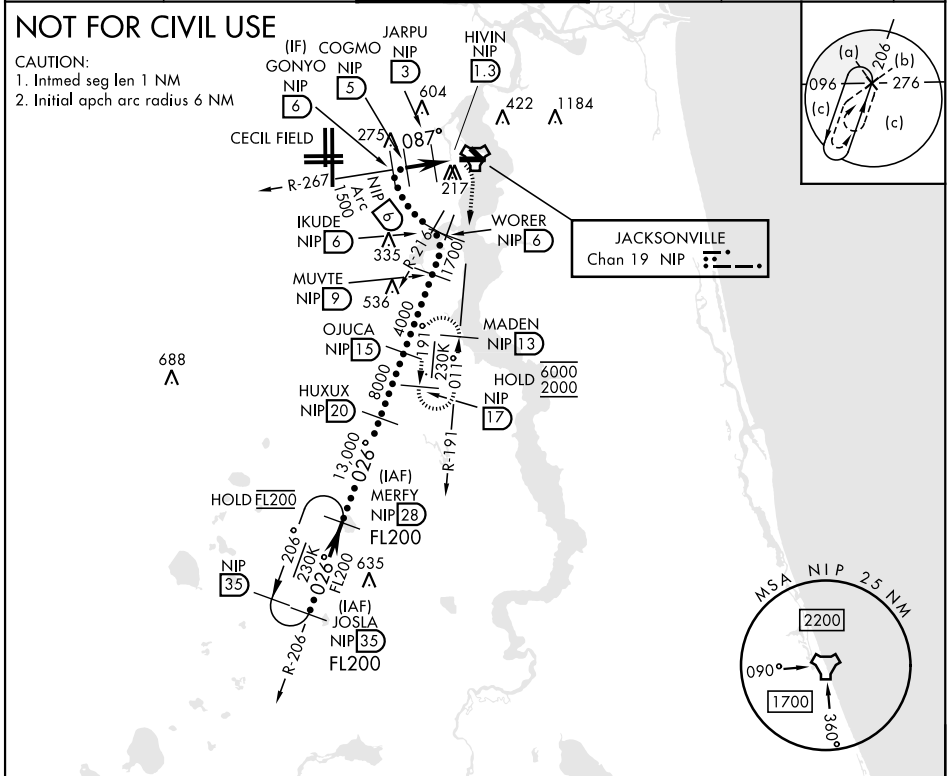
HI-TACAN Z RWY 10

TACAN Chan 19	NIP	APCH CRS 087°	Rwy ldg TDZE Arpt Elev	8006 21 23	[USN]	JACKSONVILLE NAS (TOWERS FLD)	(KNIP)
-------------------------	-----	-------------------------	------------------------------	---------------------------------------	-------	-------------------------------	--------

ALSF-1 MISSED APPROACH: Climb to 2000 direct NIP TACAN and turn right outbound R-191 to MADEN and hold.

* When ALS inop, increase CAT CDE vis to 1 1/2 miles.

ATIS 124.35 290.425	APP CON 127.775 377.075	NAVY JACKSONVILLE TOWER 125.15 (CTAF) 340.2	GND CON 128.6 336.4	CLNC DEL 134.775 0353.675	ASR/ PAR
-------------------------------	-----------------------------------	---	-------------------------------	-------------------------------------	-------------



EMERG SAFE ALT 100 NM 2800

	ELEV 23	TDZE 21	MADEN NIP 13
	GONYO NIP 6	COGMO NIP 5	JARPU NIP 3
	HUVIN NIP 1.3	NIP 1.9	NIP TACAN
CATEGORY	C	D	E
S-10*	420-3/4	399 (400-3/4)	
CIRCLING	520-1 1/2 497 (500-1 1/2)	760-2 1/4 737 (800-2 1/4)	920-3 897 (900-3)
	HIRL Rwy 10-28		

JACKSONVILLE, FLORIDA 30° 14' N - 81° 41' W JACKSONVILLE NAS (TOWERS FLD) (KNIP)

HI-TACAN Z RWY 10



SE-3, 11 JUN 2026 to 09 JUL 2026

SE-3, 11 JUN 2026 to 09 JUL 2026