

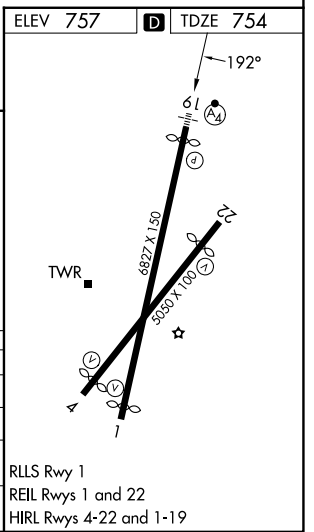
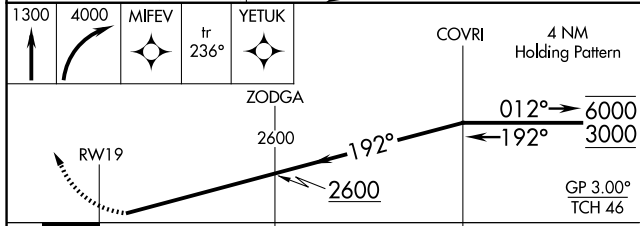
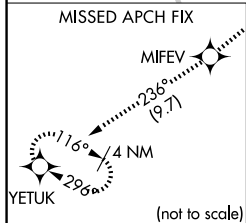
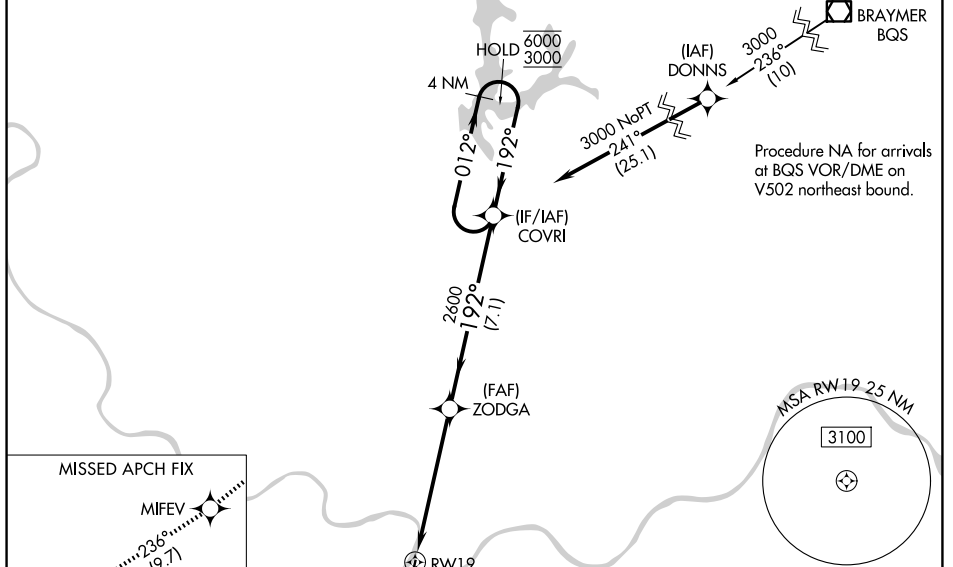
WAAS CH 90320 W19A	APP CRS 192°	Rwy Ldg TDZE Apt Elev	6526 754 757
--	------------------------	-----------------------------	---

RNAV (GPS) Z RWY 19

KANSAS CITY DOWNTOWN/WHEELER FLD (MKC)

<p>RNP APCH - GPS.</p> <p>For uncompensated Baro-VNAV systems, LNAV/VNAV NA below -19°C or above 54°C. Rwy 19 helicopter visibility reduction below RVR 4000 NA. For inop ALS, increase LPV* visibility all Cats to RVR 4500, and LPV visibility all Cats to RVR 5500.</p>	<p>MALSF</p>	<p>MISSED APPROACH: Climb to 1300 then climbing right turn to 4000 direct MIFEV and on track 236° to YETUK and hold.</p> <p>* Missed approach requires minimum climb of 300 feet per NM to 1500.</p> <p># Missed approach requires minimum climb of 360 feet per NM to 2400.</p>
	<p>Procedure NA for arrivals at BQS VOR/DME on V502 northeast bound.</p>	

ATIS 120.75	KANSAS CITY APP CON 118.4 307.35	DOWNTOWN TOWER 133.3 233.7	GND CON 121.9
-----------------------	--	--------------------------------------	-------------------------



CATEGORY	A	B	C	D
LPV DA*		1021/40	267 (300-¾)	
LPV DA		1097/40	343 (400-¾)	
LNAV/VNAV DA#		1077/40	323 (400-¾)	
LNAV/VNAV DA		1468-1¾	714 (800-1¾)	

RLLS Rwy 1
REIL Rws 1 and 22
HIRL Rws 4-22 and 1-19

NC-3, 11 JUN 2026 to 09 JUL 2026

NC-3, 11 JUN 2026 to 09 JUL 2026