

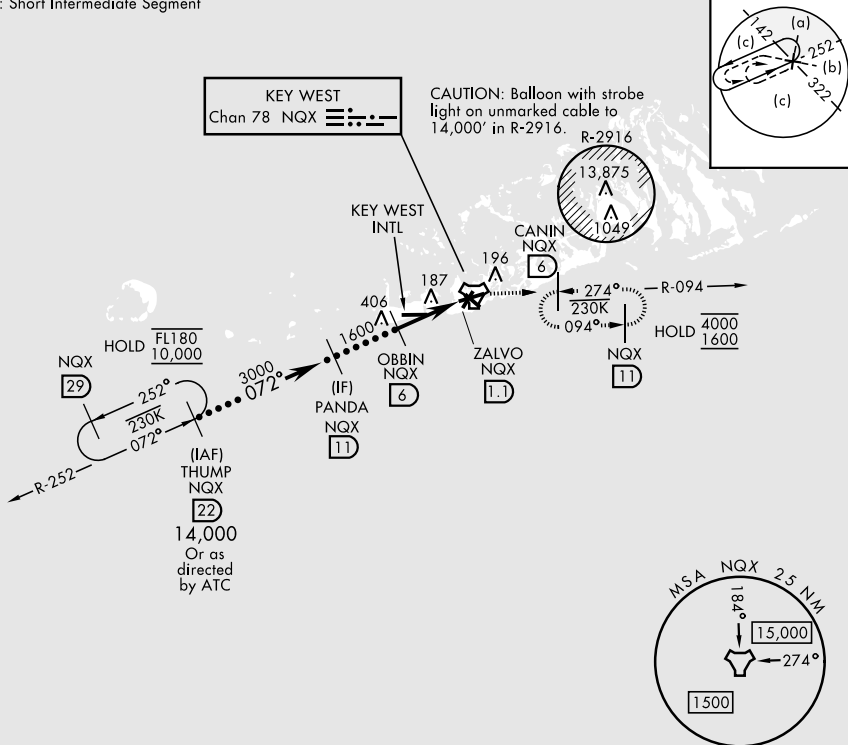
HI-TACAN X RWY 8

TACAN NQX Chan 78	APCH CRS 072°	Rwy ldg 10,001 TDZE 4 Arprt Elev 6	[USN]	KEY WEST NAS (BOCA CHICA FLD) (KNQX)
-----------------------------	-------------------------	---	-------	--------------------------------------

<p>⚠ *When ALS inop, increase vis to 1¼ miles.</p> <p>ALSF-1 A1</p>	<p>MISSED APPROACH: Climb to 1600 on NQX R-252 to NQX TACAN, then right turn to intercept R-094 to CANIN/6 DME and hold.</p>
---	--

ATIS★ 307.025	NAVY KEY WEST APP CON★ 124.025 313.7	NAVY KEY WEST TOWER★ 118.575 340.25	GND CON 121.7 336.45	ASR/PAR
-------------------------	--	---	--------------------------------	---------

CAUTION: Short Intermediate Segment



EMERG SAFE ALT 100 NM 15,000

<p>PANDA NQX [11]</p> <p>3000</p> <p>072°</p> <p>1600</p> <p>2.97° TCH 44</p> <p>4.9 NM</p>	<p>1600 NQX R-252</p>	<p>NQX</p>	<p>NQX R-094</p>	<p>CANIN NQX [6]</p>	ELEV 6	TDZE 4
	<p>OBBIN NQX [6]</p> <p>ZALVO NQX [1.1]</p> <p>NQX TACAN</p>					
CATEGORY	C	D	E			
S-8*	440-¾	436	(500-¾)			
CIRCLING	500-1½ 494 (500-1½)	580-2	574 (600-2)			
HIRL all rwys						

HI-TACAN X RWY 8

SE-3, 11 JUN 2026 to 09 JUL 2026

SE-3, 11 JUN 2026 to 09 JUL 2026