

KEY WEST, FLORIDA

RNAV (GPS) RWY 8

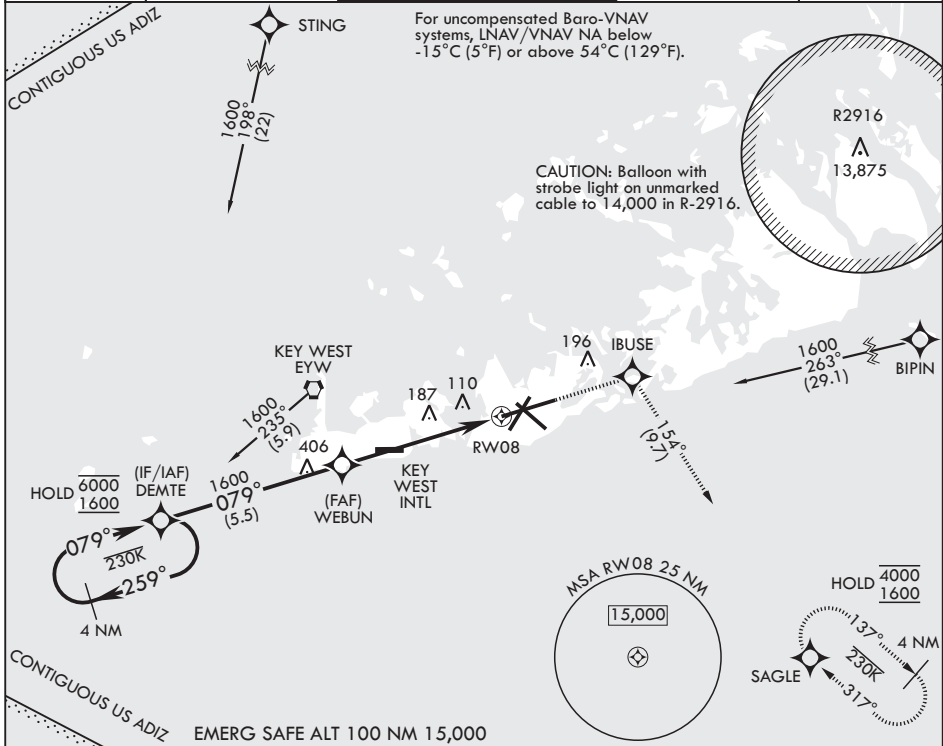
WAAS CH 65107 W08A	APCH CRS 079°	Rwy ldg TDZE Arpt Elev	10,001 4 6
--------------------------	------------------	------------------------------	------------------

(USN)

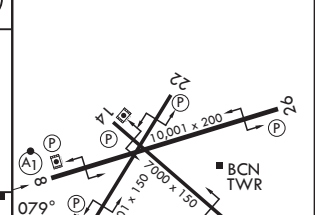
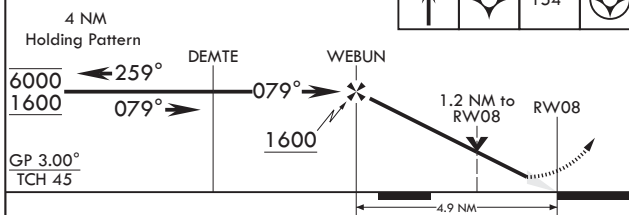
KEY WEST NAS (BOCA CHICA FLD) (KNQX)

RNP APCH-GPS	ALSF-1	MISSED APPROACH: (Do not exceed 230 KIAS until IBUSE) Climb to 1600 direct IBUSE, track 154° to SAGLE and hold.
<p>▼ * When ALS inop, increase vis to 3/4 mile. ** When ALS inop, increase vis to 1 1/4 miles. *** When ALS inop, increase CAT AB vis to 1 mile, CAT CD vis to 1 1/4 miles.</p>		

ATIS★ 307.025	APP CON★ 124.025 313.7	NAVY KEY WEST TOWER★ 118.575 340.25	GND CON 121.7 336.45	ASR/PAR
------------------	---------------------------	--	-------------------------	---------



1600	IBUSE	tr 154°	SAGLE	ELEV 6'	TDZE 4'
------	-------	---------	-------	---------	---------



CATEGORY	A	B	C	D
LPV DA*	204-1/2	200	(200-1/2)	
LNAV/VNAV DA**	425-3/4	421	(500-3/4)	
LNAV MDA***	440-1/2 436 (500-1/2)	440-3/4 436 (500-3/4)		
CIRCLING	460-1 454 (500-1)	500-1 494 (500-1)	500-1 1/2 494 (500-1 1/2)	580-2 574 (600-2)

HIRL all rwys

KEY WEST, FLORIDA 24°34'N - 81°41'W KEY WEST NAS (BOCA CHICA FLD) (KNQX)

Amdt 4 14MAY26

RNAV (GPS) RWY 8

SE-3, 11 JUN 2026 to 09 JUL 2026

SE-3, 11 JUN 2026 to 09 JUL 2026