

TACAN RWY 26

TACAN NQX Chan 78	APCH CRS 274°	Rwy Idg TDZE Arprt Elev	10,001 5 6
-----------------------------	-------------------------	-------------------------------	---------------------------------------

[USN]

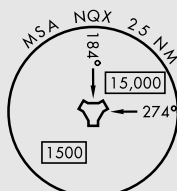
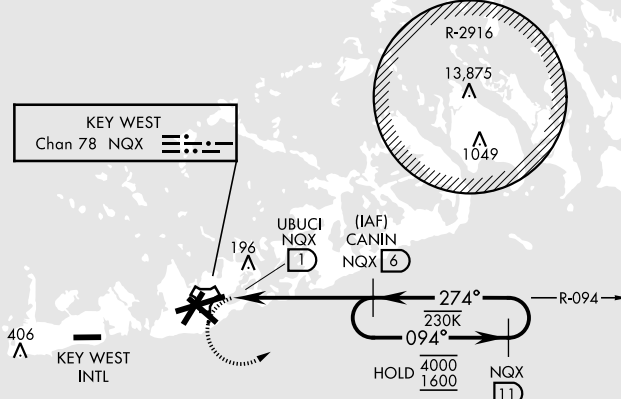
KEY WEST NAS (BOCA CHICA FLD) (KNQX)

RADAR required

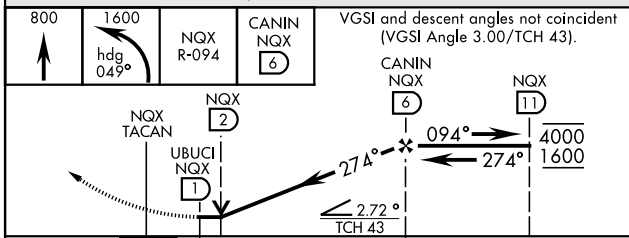
MISSED APPROACH: Climb to 800 then climbing left turn to 1600 on hdg 049° to intercept NQX R-094 to CANIN/6 DME and hold.

ATIS★ 307.025	NAVY KEY WEST APP CON★ 124.025 313.7	NAVY KEY WEST TOWER★ 118.575 340.25	GND CON 121.7 336.45	ASR/PAR
-------------------------	--	---	--------------------------------	---------

CAUTION:
Balloon with strobe light on unmarked cable to 14,000 in R-2916

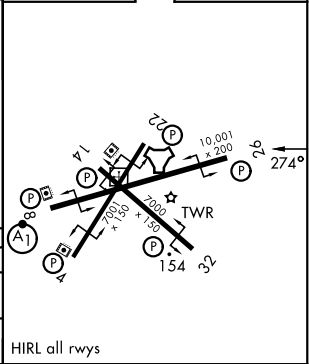


EMEG SAFE ALT 100 NM 15,000



ELEV	6	TDZE	5
------	---	------	---

CATEGORY	A	B	C	D
S-26	500-1	495 (500-1)	500-1 3/8	495 (500-1 3/8)
CIRCLING	500-1	494 (500-1)	500-1 1/2	580-2 574 (600-2)



TACAN RWY 26

SE-3, 11 JUN 2026 to 09 JUL 2026

SE-3, 11 JUN 2026 to 09 JUL 2026