

KEY WEST, FLORIDA

TACAN Y RWY 32

TACAN NQX Chan 78	APCH CRS 335°	Rwy Idg 7000
		TDZE 4
		Arprt Elev 6

[USN]

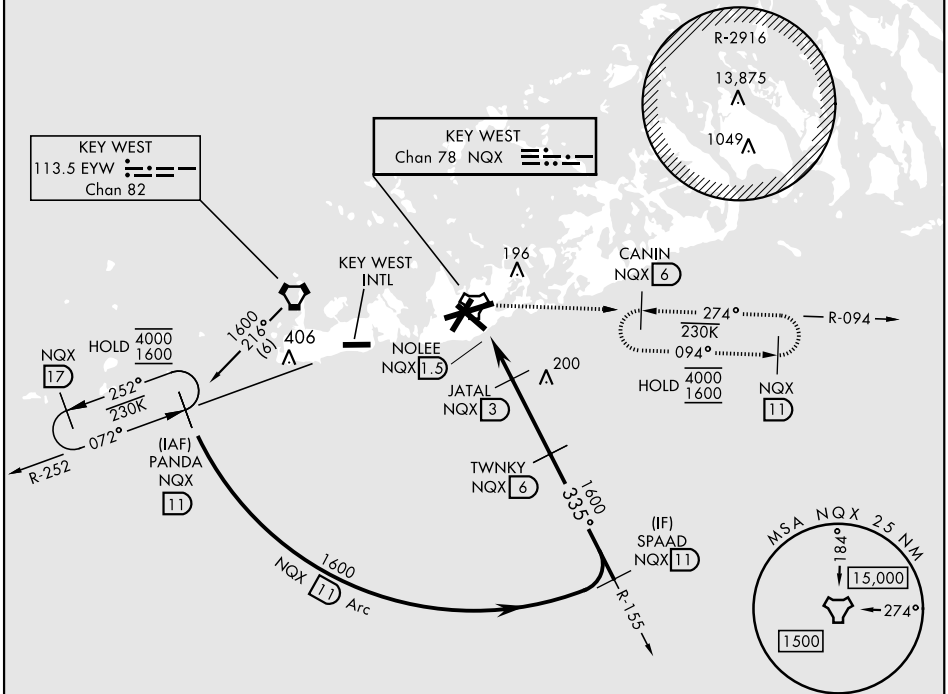
KEY WEST NAS (BOCA CHICA FLD) (KNQX)

CAUTION: Intermediate segment 5 NM less than minimum 6 NM for CAT CD.
Rwy 32 helicopter visibility reduction below 3/4 mile NA.

MISSED APPROACH: Climb to 800 then climbing right turn to 1600 to intercept NQX R-094 to CANIN/6 DME and hold.

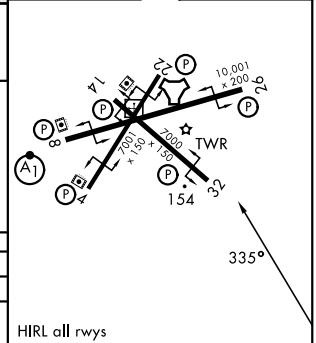
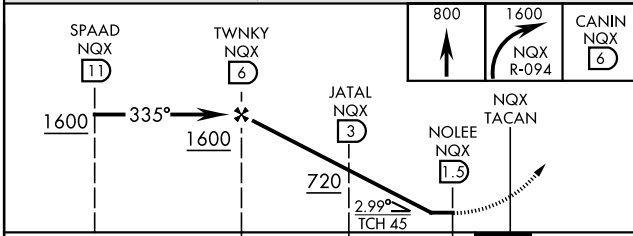
ATIS★ 307.025	NAVY KEY WEST APP CON★ 124.025 313.7	NAVY KEY WEST TOWER★ 118.575 340.25	GND CON 121.7 336.45	ASR/PAR
------------------	---	--	-------------------------	---------

CAUTION: Balloon with strobe light on unmarked cable to 14,000 in R-2916.



EMERG SAFE ALT 100 NM 15,000

ELEV	6	TDZE	4
------	---	------	---



CATEGORY	A	B	C	D
S-32	380-1	376	(400-1)	
CIRCLING	460-1 454 (500-1)	500-1 494 (500-1)	500-1½ 494 (500-1½)	580-2 574 (600-2)

HIRL all rwys

KEY WEST, FLORIDA

24°34'N-81°41'W

KEY WEST NAS (BOCA CHICA FLD) (KNQX)

Amdt 1 14MAY26

TACAN Y RWY 32

SE-3, 11 JUN 2026 to 09 JUL 2026

SE-3, 11 JUN 2026 to 09 JUL 2026