

KEY WEST, FLORIDA

TACAN Y RWY 8

TACAN NQX Chan 78	APCH CRS 072°	Rwy ldg 10,001 TDZE 4 Arprt Elev 6
--------------------------	----------------------	---

[USN]

KEY WEST NAS (BOCA CHICA FLD) (KNQX)

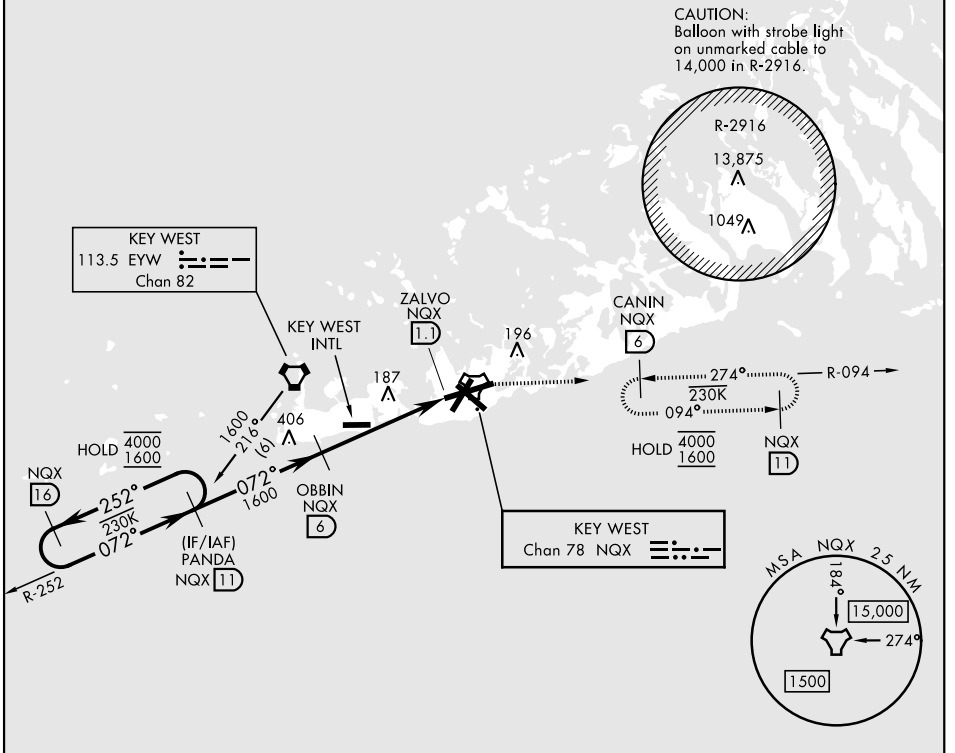
▼ *When ALS inop, increase CAT AB vis to 1 mile, CAT CD vis to 1¼ miles.

ALS-F1 

MISSED APPROACH: Climb to 1600 on NQX R-252 to NQX TACAN, and right turn to intercept R-094 to CANIN/6 DME and hold.

ATIS★ 307.025	NAVY KEY WEST APP CON★ 124.025 313.7	NAVY KEY WEST TOWER★ 118.575 340.25	GND CON 121.7 336.45	ASR/PAR
-------------------------	--	---	--------------------------------	---------

CAUTION: Short Intermediate Segment

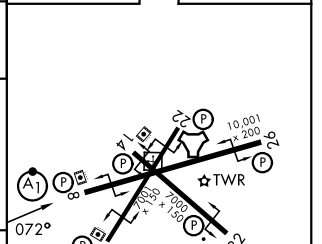
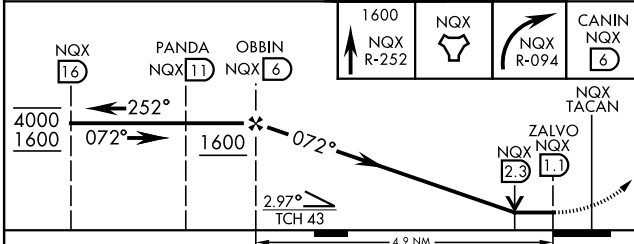


SE-3, 11 JUN 2026 to 09 JUL 2026

SE-3, 11 JUN 2026 to 09 JUL 2026

EMERG SAFE ALT 100 NM 15,000

ELEV	6	TDZE	4
------	---	------	---



CATEGORY	A	B	C	D
S-8*	440-½ 436	(500-½)	440-¾ 436	(500-¾)
CIRCLING	460-1 454 (500-1)	500-1 494 (500-1)	500-1½ 494 (500-1½)	580-2 574 (600-2)

HIRL all rwy's

KEY WEST, FLORIDA
Amdt 5 14MAY26

24°34'N-81°41'W KEY WEST NAS (BOCA CHICA FLD) (KNQX)

TACAN Y RWY 8