

KEY WEST, FLORIDA

VOR/DME or TACAN Z RWY 8

EYW VORTAC 113.5 Chan 82	APCH CRS 098°	Rwy Idg 10,001 TDZE 4 Arprt Elev 6
----------------------------------------------	-------------------------	---------------------------------------------------------------

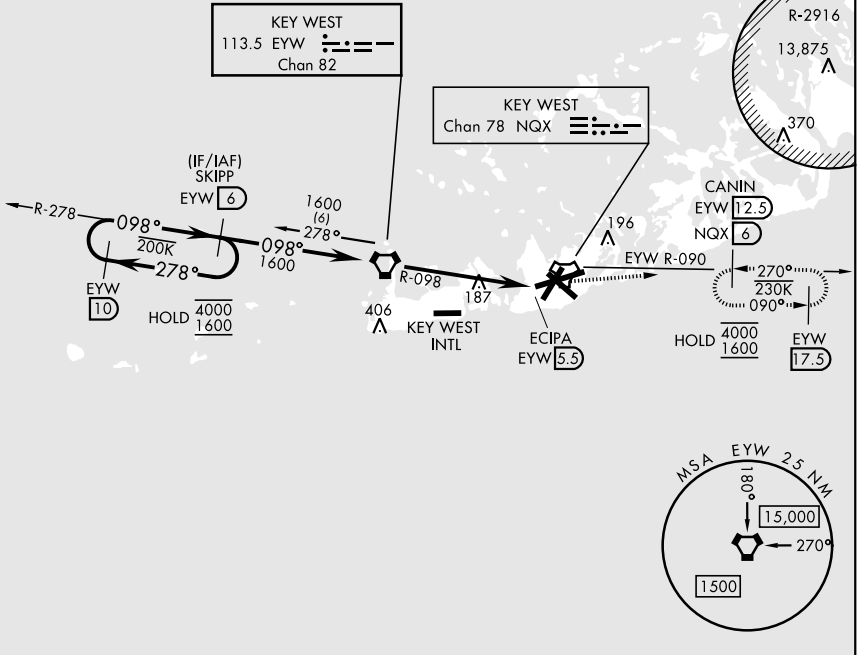
[USN]

KEY WEST NAS (BOCA CHICA FLD) (KNQX)

ALSIF-1 MISSED APPROACH: Climbing left turn to 1600, intercept EYW VORTAC R-090 to CANIN/12.5 DME/ NQX 6 DME and hold.

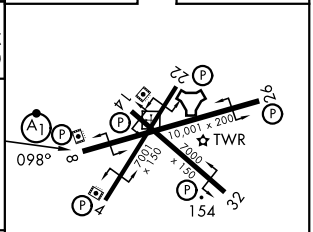
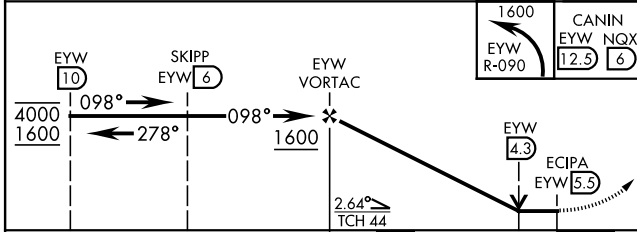
ATIS ★ 307.025	NAVY KEY WEST APP CON ★ 124.025 313.7	NAVY KEY WEST TOWER ★ 118.575 340.25	GND CON 121.7 336.45	ASR/PAR
--------------------------	-------------------------------------------------	------------------------------------------------	--------------------------------	---------

CAUTION:
Balloon with strobe light
on unmarked cable to
14,000 in R-2916.



EMERG SAFE ALT 100 NM 15,000

ELEV 6	TDZE 4
--------	--------



CATEGORY	A	B	C	D
S-8	440-1 436 (500-1)		440-1 ¼ 436 (500-1 ¼)	
CIRCLING	460-1 454 (500-1)	500-1 494 (500-1)	500-1 ½ 494 (500-1 ½)	580-2 574 (600-2)

HIRL all rwys

KEY WEST, FLORIDA
Amdt 5 14MAY26

24° 34' N-81° 41' W KEY WEST NAS (BOCA CHICA FLD) (KNQX)

VOR/DME or TACAN Z RWY 8

SE-3, 11 JUN 2026 to 09 JUL 2026

SE-3, 11 JUN 2026 to 09 JUL 2026