

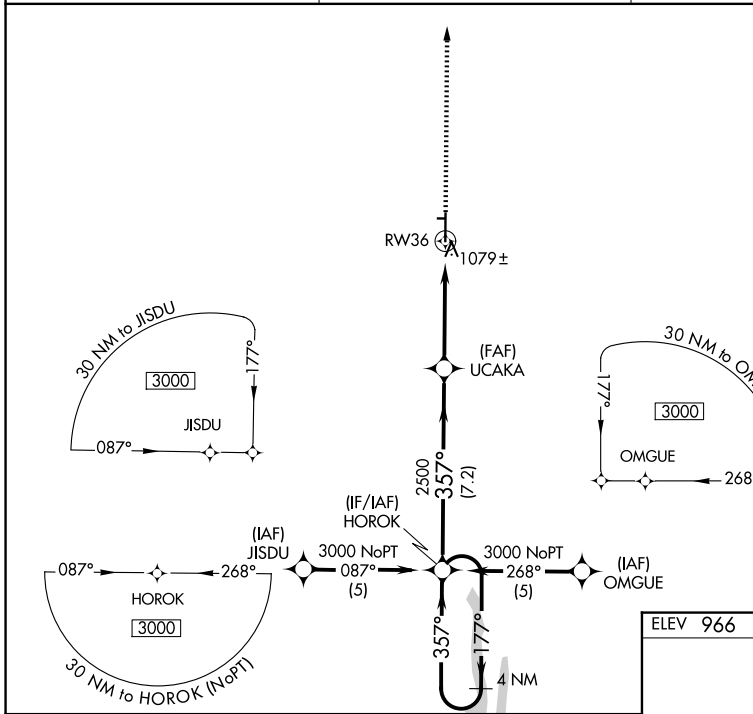
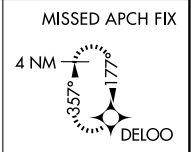
WAAS CH <b>70513</b> <b>W36A</b>	APP CRS <b>357°</b>	Rwy Ldg TDZE Apt Elev	<b>6005</b> <b>965</b> <b>966</b>
--	------------------------	-----------------------------	---

# RNAV (GPS) RWY 36

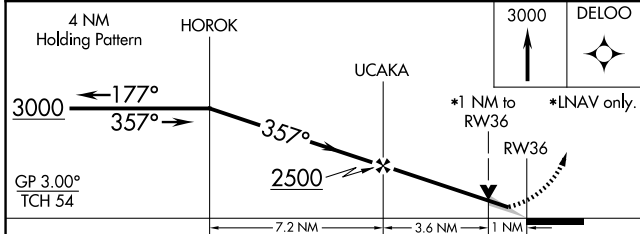
KIRKSVILLE RGNL (IRK)

RNP APCH.	MALSR	MISSED APPROACH: Climb to 3000 direct DELOO and hold.
Circling NA to Rws 9 and 27. For uncompensated Baro-VNAV systems, LNAV/VNAV NA below -16°C or above 46°C.		

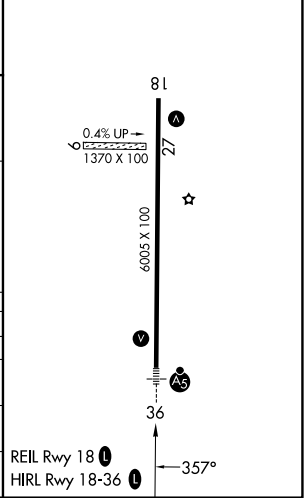
ASOS <b>121.125</b>	KANSAS CITY CENTER <b>132.6 370.9</b>	UNICOM <b>122.8 (CTAF)</b>
------------------------	--	-------------------------------



ELEV 966		TDZE 965
----------	--	----------



CATEGORY	A	B	C	D
LPV DA		1165-½	200 (200-½)	
LNAV/VNAV DA		1349-¾	384 (400-¾)	
LNAV MDA	1340-½	375 (400-½)		1340-1 375 (400-1)
CIRCLING	1400-1 434 (500-1)	1440-1 474 (500-1)	1460-1½ 494 (500-1½)	1540-2 574 (600-2)



NC-3, 11 JUN 2026 to 09 JUL 2026

NC-3, 11 JUN 2026 to 09 JUL 2026