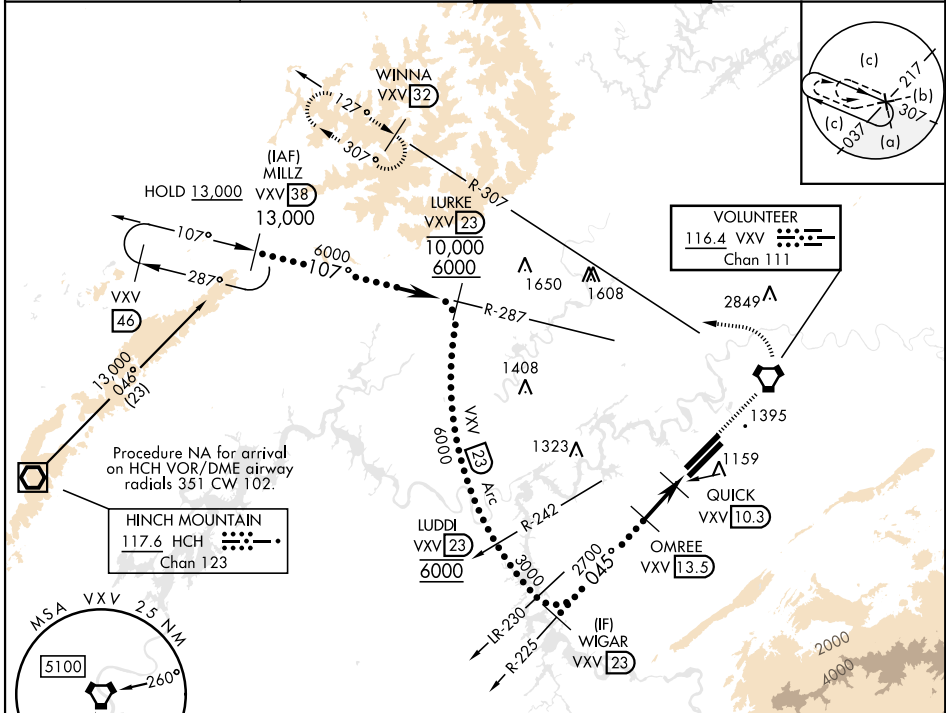


HI-VOR or TACAN RWY 5L

VORTAC VXV 116.4 Chan 111	APCH CRS 045°	Rwy Idg TDZE Arprt Elev 9508 953 986	[USAF]	MC GHEE TYSON (KTYS)
---	-------------------------	--	--------	----------------------

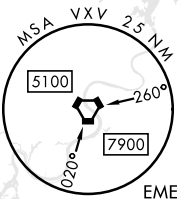
DME required	MALSR (A5)	MISSED APPROACH: Climb to 6000 direct to VXV VORTAC, then on VXV R-307 to WINNA/VXV 32 DME and hold.
--------------	----------------------	--

ATIS 128.35	KNOXVILLE APP CON 118.0 360.8 051° - 229° 123.9 353.6 230° - 050°	KNOXVILLE TOWER 121.2 257.8	GND CON 121.9 348.6
-----------------------	---	---------------------------------------	-------------------------------



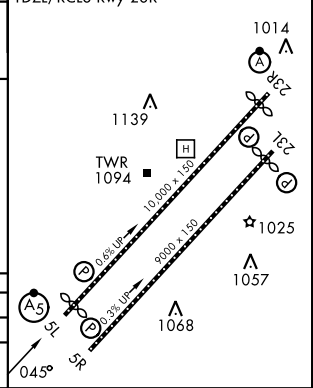
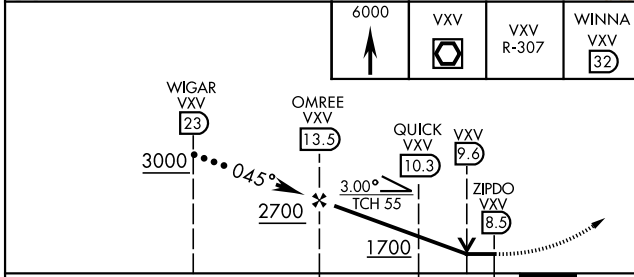
Procedure NA for arrival on HCH VOR/DME airway radials 351 CW 102.

HINCH MOUNTAIN
117.6 HCH
Chan 123



EMERG SAFE ALT 100 NM 8900

ELEV 986	TDZE 953
HIRL all rwys	
REIL Rwy 5R-23L	
TDZL/RCLS Rwy 23R	



CATEGORY	C	D	E
S-5L*	1480/55	527	(600-1)
CIRCLING	1660-2 674 (700-2)	1900-3	914 (1000-3)

HI-VOR or TACAN RWY 5L

SE-1, 11 JUN 2026 to 09 JUL 2026

SE-1, 11 JUN 2026 to 09 JUL 2026