

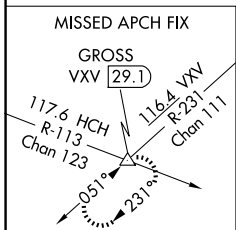
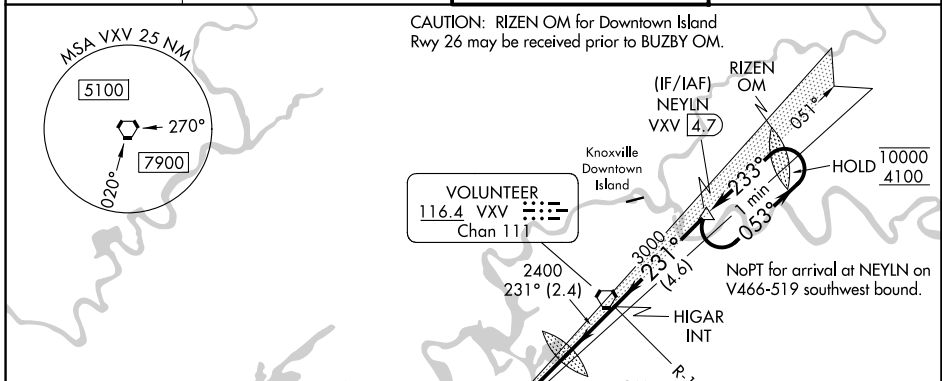
LOC I-BUI <b>111.7</b>	APP CRS <b>231°</b>	Rwy Ldg TDZE Apt Elev	<b>9495</b> <b>984</b> <b>986</b>
---------------------------	------------------------	-----------------------------	---

# ILS or LOC RWY 23R

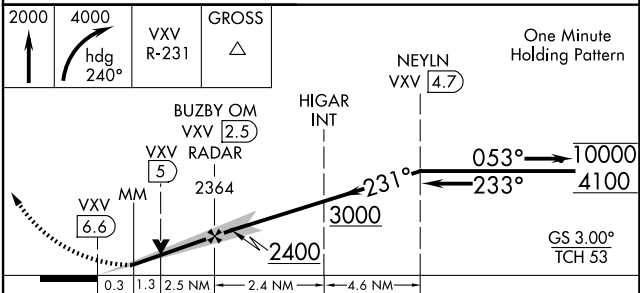
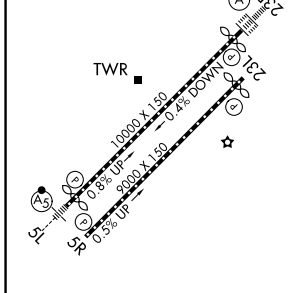
MC GHEE TYSON (T'YS)

DME or RADAR required.		ALSIF-2 	MISSED APPROACH: Climb to 2000 then climbing right turn to 4000 on heading 240° and VXV VORTAC R-231 to GROSS INT/VXV 29.1 DME and hold.
	For inop ALS, increase S-ILS 23R Cat E visibility to RVR 4000; increase S-LOC 23R Cat C/D/E visibility to 1/2 SM.		

ATIS <b>128.35</b>	KNOXVILLE APP CON <b>123.9 360.8</b>	KNOXVILLE TOWER <b>121.2 257.8</b>	GND CON <b>121.9 348.6</b>
-----------------------	---	---------------------------------------	-------------------------------



ELEV 986	<b>D</b>	TDZE 984
----------	----------	----------



HIRL Rws 5L-23R and 5R-23L	REIL Rws 5R and 23L	TDZL/RCLS Rwy 23R	FAF to MAP 4.2 NM		
Knots	60	90	120	150	180
Min:Sec	4:12	2:48	2:06	1:41	1:24
CATEGORY	A	B	C	D	E
S-ILS 23R	1184/18 200 (200-1/2)				
S-LOC 23R	1560/24	576 (600-1/2)	1560-1/4	576 (600-1/4)	
CIRCLING	1560-1	574 (600-1)	1660-2	1900-3 914 (1000-3)	
			674 (700-2)		

SE-1, 11 JUN 2026 to 09 JUL 2026

SE-1, 11 JUN 2026 to 09 JUL 2026