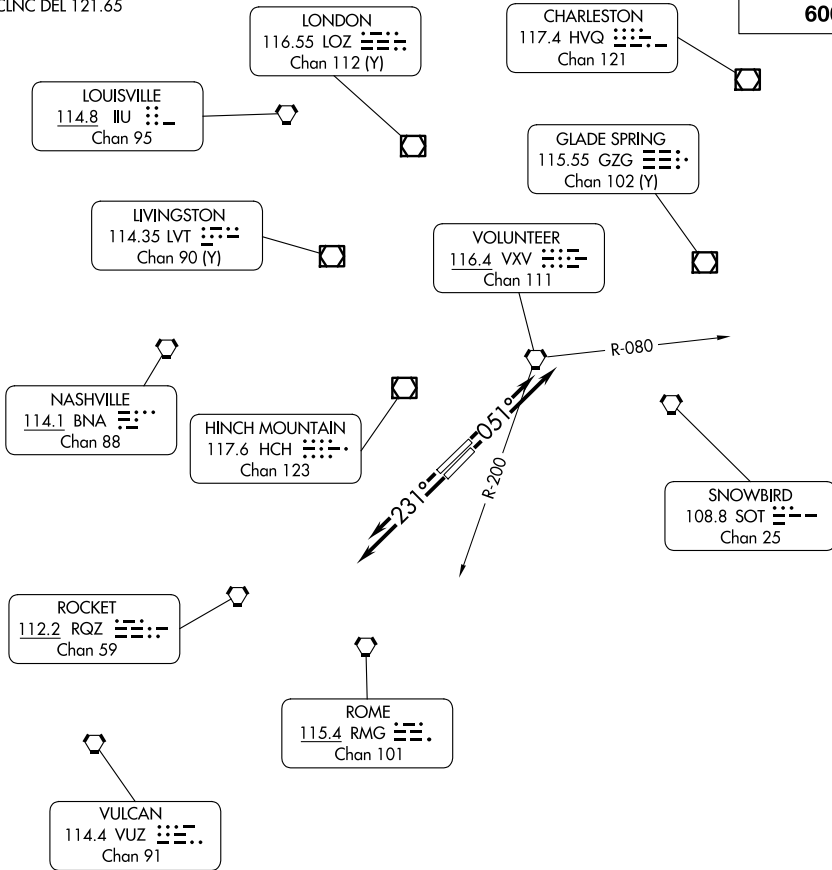


# KNOXVILLE SEVEN DEPARTURE

ATIS 128.35  
CLNC DEL 121.65

**TOP ALTITUDE:  
6000**



**TAKEOFF MINIMUMS:**  
Rwy 5L/R, 23L/R: Standard.

**NOTE: RADAR required.**  
NOTE: Chart not to scale.

## DEPARTURE ROUTE DESCRIPTION

TAKEOFF RUNWAY 5L/5R: Climb on heading 051° or as assigned for vectors to filed route, thence....

TAKEOFF RUNWAY 23L/R: Climb on heading 231° or as assigned for vectors to filed route, thence....

....maintain 6000 (or assigned lower altitude). Expect clearance to requested altitude/flight level ten minutes after departure.

LOST COMMUNICATIONS: If filed route is between the VXV R-080 and the VXV R-200 and radio contact is not established with departure control prior to reaching 6000 continue climb to 9000 before turning on course.

# KNOXVILLE SEVEN DEPARTURE

SE-1, 11 JUN 2026 to 09 JUL 2026

SE-1, 11 JUN 2026 to 09 JUL 2026