

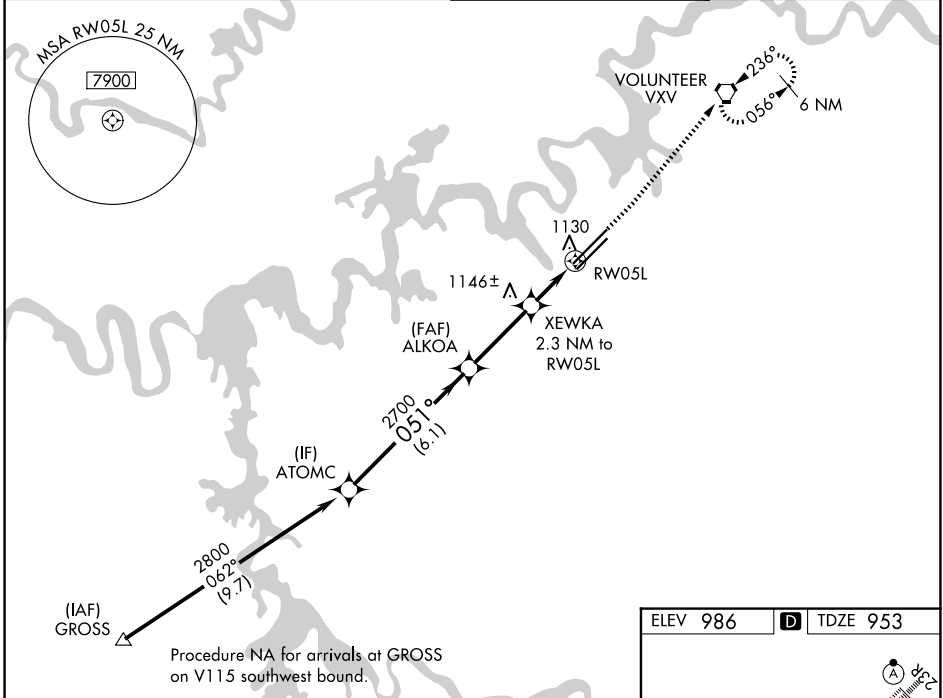
WAAS CH <b>48802</b> <b>W05A</b>	APP CRS <b>051°</b>	Rwy Ldg TDZE <b>953</b> Apt Elev <b>986</b>
--	------------------------	---

# RNAV (GPS) RWY 5L

MC GHEE TYSON (T'YS)

RNP APCH - GPS. ▼ For uncompensated Baro-VNAV systems, LNAV/VNAV NA below -10°C or above 54°C. ▲ * RVR 1800 authorized with use of FD or AP or HUD to DA.	MALSR 	MISSED APPROACH: Climb to 1500 then climb to 4000 direct VXV VORTAC and hold, continue climb-in-hold to 4000.
---	-----------	---

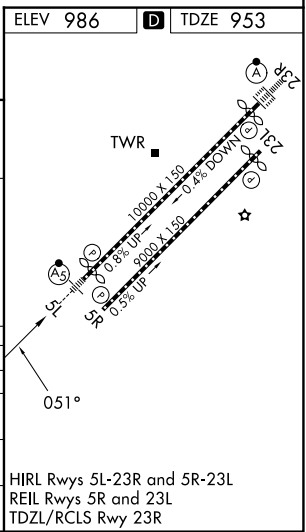
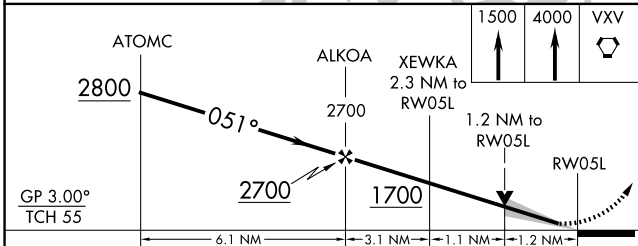
ATIS <b>128.35</b>	KNOXVILLE APP CON <b>123.9 360.8</b>	KNOXVILLE TOWER <b>121.2 257.8</b>	GND CON <b>121.9 348.6</b>
-----------------------	---	---------------------------------------	-------------------------------



SE-1, 11 JUN 2026 to 09 JUL 2026

SE-1, 11 JUN 2026 to 09 JUL 2026

Procedure NA for arrivals at GROSS on V115 southwest bound.



CATEGORY	A	B	C	D
LPV DA*	1153/24		200 (200-½)	
LNAV/VNAV DA	1291/26		338 (400-½)	
LNAV MDA	1380/24	427 (400-½)	1380/40	427 (400-¾)
CIRCLING	1500-1 514 (600-1)	1560-1 574 (600-1)	1660-2 674 (700-2)	1900-3 914 (1000-3)

HIRL Rwy 5L-23R and 5R-23L  
REIL Rwy 5R and 23L  
TDZL/RCLS Rwy 23R