

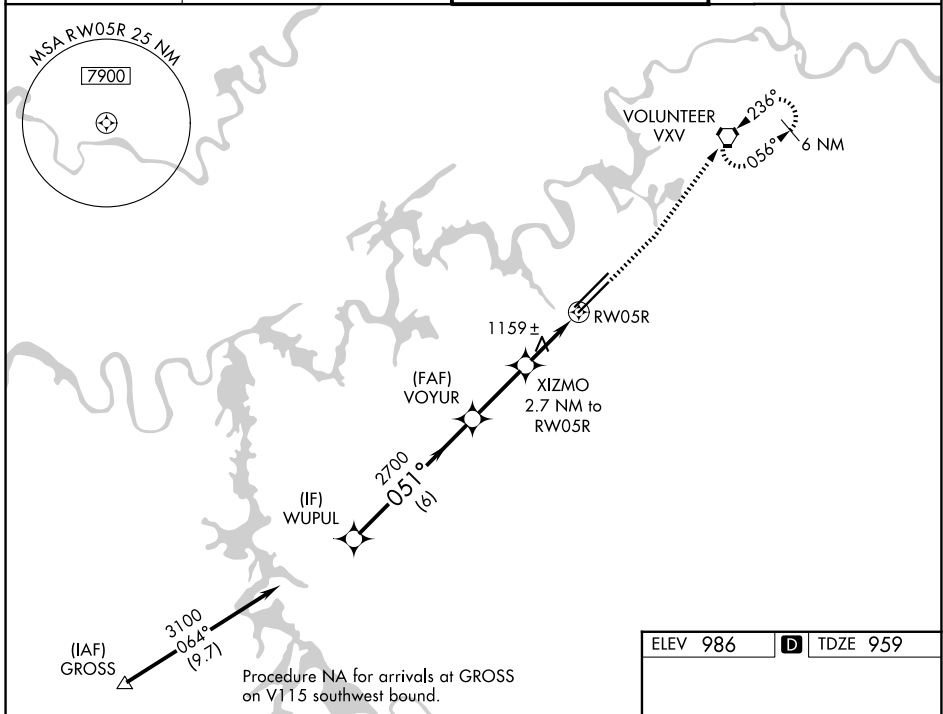
WAAS CH <b>97410</b> <b>W05B</b>	APP CRS <b>051°</b>	Rwy Ldg TDZE Apt Elev	<b>8600</b> <b>959</b> <b>986</b>
--	------------------------	-----------------------------	---

# RNAV (GPS) RWY 5R

MC GHEE TYSON (T'YS)

RNP APCH - GPS.	MISSED APPROACH: Climb to 1500 then climb to 4000 direct VXV VORTAC and hold, continue climb-in-hold to 4000.
<p>For uncompensated Baro-VNAV systems, LNAV/VNAV NA below -10°C or above 54°C.</p>	

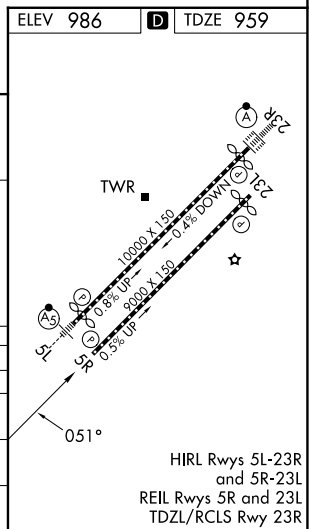
ATIS <b>128.35</b>	KNOXVILLE APP CON <b>123.9 360.8</b>	KNOXVILLE TOWER <b>121.2 257.8</b>	GND CON <b>121.9 348.6</b>
-----------------------	---	---------------------------------------	-------------------------------



VGSI and RNAV glidepath not coincident (VGSI Angle 3.00/TCH 50).

WUPUL	VOYUR	XIZMO	RW05R
3100	2700	1840	
GP 3.00° TCH 43			
6 NM	2.7 NM	1.3 NM	1.4 NM
1500	4000	VXV	

CATEGORY	A	B	C	D
LPV DA		1159-3/4	200 (200-3/4)	
LNAV/VNAV DA		1276-1 1/8	317 (300-1 1/8)	
LNAV MDA	1420-1	461 (500-1)	1420-1 3/8	461 (500-1 3/8)
CIRCLING	1500-1 514 (600-1)	1620-1 634 (700-1)	1660-2 674 (700-2)	1900-3 914 (1000-3)



SE-1, 11 JUN 2026 to 09 JUL 2026

SE-1, 11 JUN 2026 to 09 JUL 2026