

WAAS CH <b>56509</b> <b>W13A</b>	APP CRS <b>135°</b>	Rwy Ldg TDZE Apt Elev	<b>5310</b> <b>656</b> <b>656</b>
--	------------------------	-----------------------------	---

# RNAV (GPS) RWY 13

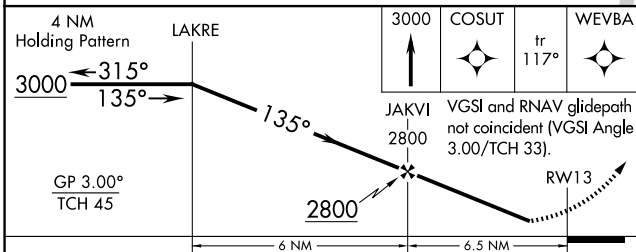
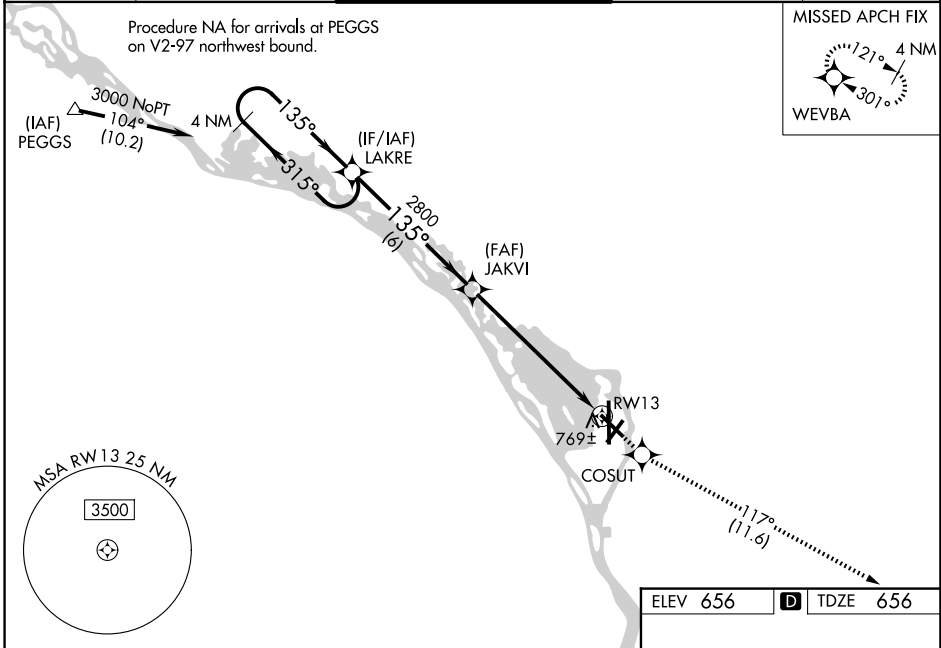
LA CROSSE RGNL (LSE)

**⚠** Baro-VNAV NA when using Winona altimeter setting. For uncompensated Baro-VNAV systems, LNAV/VNAV NA below -27° C (-1.6° F) or above 54° C (130° F). DME/DME RNP-0.3 NA. Helicopter visibility reduction below 3/4 SM NA. Circling to Rwy 22 NA at night. **⚠** -21°C

When local altimeter setting not received, use Winona altimeter setting and increase DA 53 feet, increase LPV and LNAV/VNAV visibility 1/4 mile all Cats, increase all MDA 60 feet, increase LNAV Cats C/D and Circling Cat B visibility 1/4 mile.

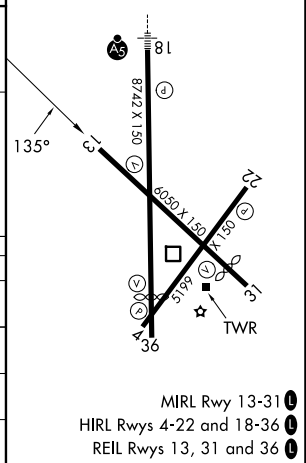
**MISSED APPROACH:**  
Climb to 3000 direct COSUT and on track 117° to WEVBA and hold.

ATIS <b>124.95</b>	MINNEAPOLIS CENTER <b>128.6 363.0</b>	LA CROSSE TOWER * <b>118.45 (CTAF) 0 251.075</b>	GND CON <b>121.8</b>	UNICOM <b>122.95</b>
-----------------------	--	---	-------------------------	-------------------------



ELEV 656	<b>D</b> TDZE 656
----------	-------------------

CATEGORY	A	B	C	D
LPV DA	958-1 302 (400-1)			
LNAV/VNAV DA	1020-1 364 (400-1 1/4)			
LNAV MDA	1140-1	484 (500-1)	1140-1 3/8 484 (500-1 3/8)	1140-1 1/2 484 (500-1 1/2)
CIRCLING	1140-1 484 (500-1)	1460-1 804 (900-1)	1760-3 1104 (1200-3)	1820-3 1164 (1200-3)



MIRL Rwy 13-31 **1**  
HIRL Rws 4-22 and 18-36 **1**  
REIL Rws 13, 31 and 36 **1**

EC-3, 11 JUN 2026 to 09 JUL 2026

EC-3, 11 JUN 2026 to 09 JUL 2026