
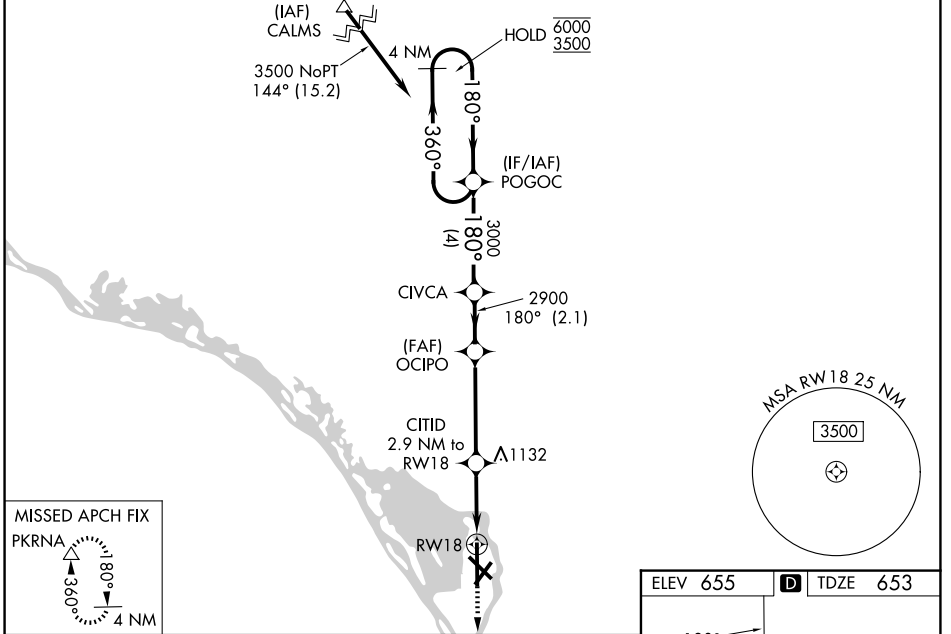


WAAS CH 72809	APP CRS 180°	Rwy Ldg TDZE Apt Elev	8536 653 655
W18A			

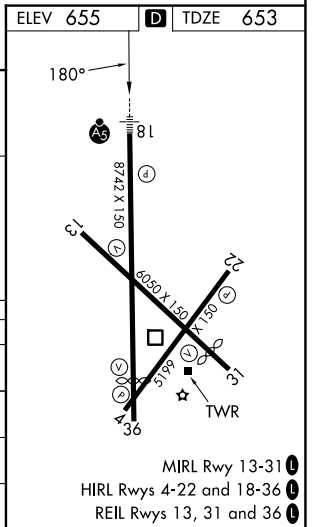
RNAV (GPS) RWY 18

LA CROSSE RGNL (LSE)

RNP APCH - GPS.		LA CROSSE TOWER ★ 118.45 (CTAF) 251.075		GND CON 121.8	UNICOM 122.95
<p>▼ ▲ ☁ -21°C</p> <p>For uncompensated Baro-VNAV systems, LNAV/VNAV NA below -19°C or above 54°C. When local altimeter setting not received, use ONA altimeter setting and increase LPV DA to 907 feet; increase LNAV/VNAV DA to 1174 feet; increase all MDAs 60 feet and Circling visibility Cat B ¼ SM. For inop ALS, increase LNAV/VNAV all Cats visibility to 1 ½ SM, and LNAV Cats C and D to 1 ¾ SM. Baro-VNAV and VDP NA when using ONA altimeter setting.</p>		<p>MALSR</p> 		<p>MISSED APPROACH: Climb to 3000 direct PKRNA and hold.</p>	



4 NM Holding Pattern		POGOC	CIVCA	OCIPO	CITID	PKRNA
6000 ← 360°		→ 180°	180°	2900	1620	3000
GP 3.00°		TCH 55		2.9 NM to RWY 18	1.3 NM to RWY 18	
4 NM		2.1 NM	4 NM	1.6	1.3 NM	
CATEGORY	A	B	C	D		
LPV DA	853-½		200 (200-½)			
LNAV/VNAV DA	1120-1		467 (500-1)			
LNAV MDA	1120-½	467 (500-½)	1120-1	467 (500-1)		
CIRCLING	1140-1 485 (500-1)	1460-1 805 (900-1)	1760-3 1105 (1200-3)	1820-3 1165 (1200-3)		



EC-3, 11 JUN 2026 to 09 JUL 2026

EC-3, 11 JUN 2026 to 09 JUL 2026