

# RNAV (GPS) RWY 24

LAKEHURST MAXFIELD FLD,

(JOINT BASE MC GUIRE DIX LAKEHURST) (KNEL)

WAAS CH <b>60342</b> <b>W24A</b>	APCH CRS <b>242°</b>	Rwy Idg TDZE Arprt Elev <b>5002</b> <b>101</b> <b>101</b>
--	-------------------------	--

[USN]

RNP APCH-GPS

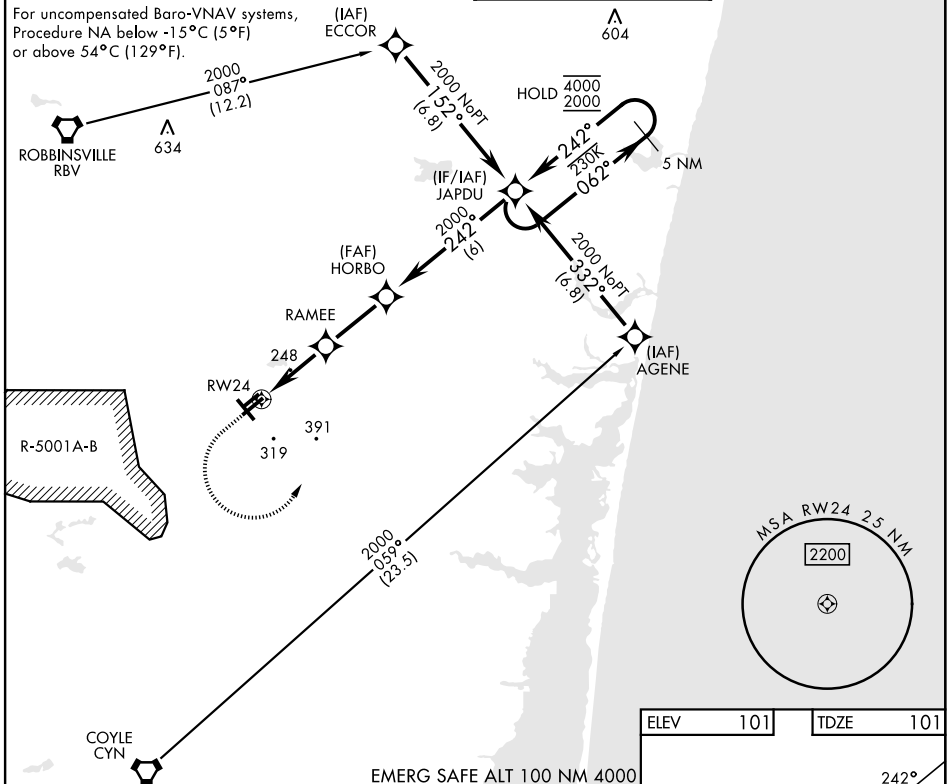
▼ \* When ALS inop, increase vis to ¾ mile.  
 \*\* When ALS inop, increase vis to 1½ miles.  
 \*\*\* When ALS inop, increase CAT AB vis to 1 mile;  
 CAT CD vis to 1½ miles.



MISSED APPROACH: Climb to 700 then climbing left turn to 2000 direct JAPDU and hold.

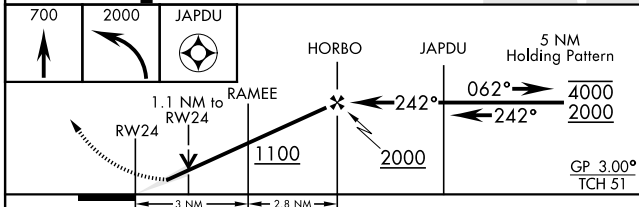
ATIS★ <b>276.525</b>	MC GUIRE APP CON <b>126.475 363.8</b>	TOWER★ <b>127.775 360.2</b>	GND CON <b>118.375 307.375</b>
-------------------------	--	--------------------------------	-----------------------------------

For uncompensated Baro-VNAV systems,  
 Procedure NA below -15°C (5°F)  
 or above 54°C (129°F).

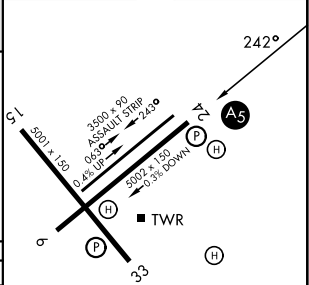


NE-2, 11 JUN 2026 to 09 JUL 2026

NE-2, 11 JUN 2026 to 09 JUL 2026



ELEV	101	TDZE	101
------	-----	------	-----



CATEGORY	A	B	C	D
LPV DA*		301-½	200 (200-½)	
LNAV/VNAV DA**		493-⅝	392 (400-⅝)	
LNAV MDA***	500-½	399 (400-½)	500-⅝	399 (400-⅝)
CIRCLING	660-1	720-1	720-1¾	720-2
	559 (600-1)	619 (700-1)	619 (700-1¾)	619 (700-2)

HIRL Rwy 6-24  
 MIRL Rwy 063°-243°

# RNAV (GPS) RWY 24