

LAKEHURST, NEW JERSEY

# RNAV (GPS) RWY 33

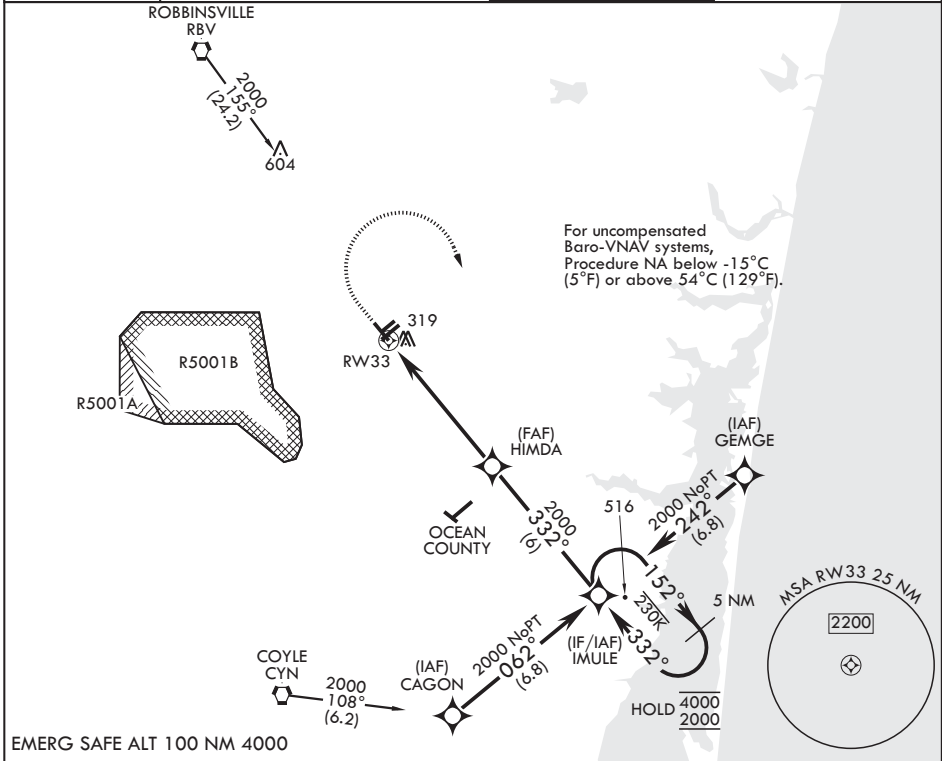
WAAS CH <b>96580</b> W33A	APCH CRS <b>332°</b>	Rwy ldg TDZE Arpt Elev	<b>5001</b> <b>88</b> <b>101</b>
---------------------------------	-------------------------	------------------------------	--

(USN)

LAKEHURST MAXFIELD FIELD (JOINT BASE MC GUIRE DIX LAKEHURST) (KNEL)

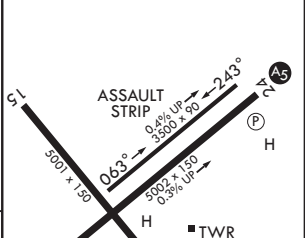
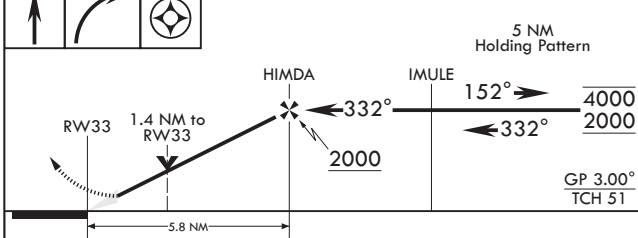
RNP APCH - GPS	MISSED APPROACH: Climb to 700 then climbing right turn to 2000 direct IMULE and hold.
----------------	---

ATIS* <b>276.525</b>	MC GUIRE APP CON/DEP CON <b>126.475 363.8</b>	TOWER* <b>127.775 0 360.2</b>	GND CON <b>118.375 307.375</b>
-------------------------	--	----------------------------------	-----------------------------------



EMERG SAFE ALT 100 NM 4000

700	2000	IMULE	ELEV 101	TDZE 88
-----	------	-------	----------	---------



CATEGORY	A	B	C	D
LPV DA	288-3/4	200	(200-3/4)	289-3/4 201 (200-3/4)
LNAV/VNAV DA	556-1 3/8		468	(500-1 1/8)
LNAV MDA	600-1	512 (500-1)	600-1 3/8	512 (500-1 1/8)
CIRCLING	660-1 559 (600-1)	720-1 619 (700-1)	720-1 1/4 619 (700-1 1/4)	720-2 619 (700-2)

HIRL Rwy 6-240
MIRL Rwy 063°-243°

LAKEHURST, NEW JERSEY

LAKEHURST MAXFIELD FIELD (JOINT BASE MC GUIRE DIX LAKEHURST) (KNEL)

Amdt 5 11JUN26

40°02'N - 74°21'W

# RNAV (GPS) RWY 33

NE-2, 11 JUN 2026 to 09 JUL 2026

NE-2, 11 JUN 2026 to 09 JUL 2026