

VORTAC LRD <b>117.4</b> Chan <b>121</b>	APP CRS <b>139°</b>	Rwy Ldg TDZE Apt Elev <b>5927</b> <b>508</b> <b>508</b>
---	------------------------	--

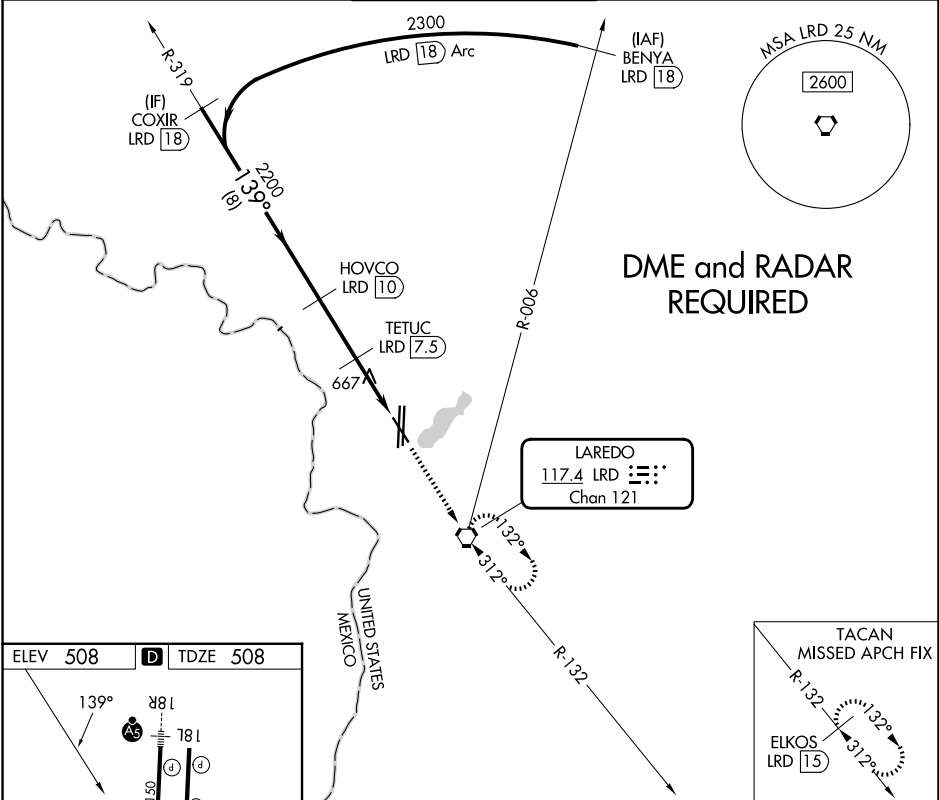
# VOR or TACAN RWY 14

LAREDO INTL (LRD)

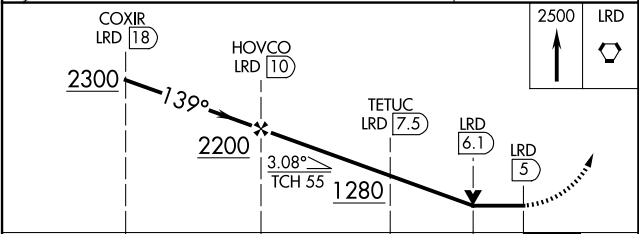
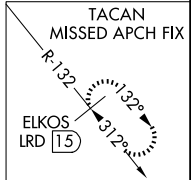
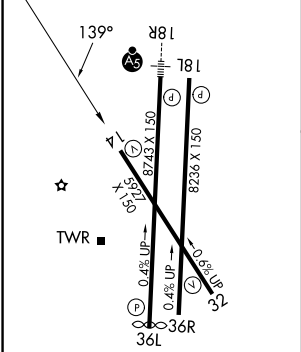
**⚠** Circling NA west of Rwy 14 and 36L. DME required.

**⚠** MISSED APPROACH: Climb to 2500 direct LRD VORTAC and hold, continue climb-in-hold to 2500 (TACAN aircraft continue on LRD VORTAC R-132 to ELKOS/15 DME and hold SE, 312° inbound).

ATIS <b>125.775</b>	HOUSTON CENTER <b>127.8 307.2</b>	LAREDO TOWER ★ <b>120.1 (CTAF) 0 257.9</b>	GND CON <b>121.8</b>	UNICOM <b>122.95</b>
------------------------	--------------------------------------	---	-------------------------	-------------------------



ELEV 508	<b>D</b>	TDZE 508
----------	----------	----------



CATEGORY	A	B	C	D	E
S-14	920-1	412 (500-1)	920-1¼	412 (500-1¼)	920-1½ 412 (500-1½)
CIRCLING	940-1 432 (500-1)	980-1 472 (500-1)	1100-1½ 592 (600-1½)	1200-2¼ 692 (700-2¼)	1200-2½ 692 (700-2½)

LAREDO, TEXAS  
MIRL Rwy 14-32  
HIRL Rwy 18-36L and 18L-36R

27°33'N-99°28'W

LAREDO INTL (LRD)

# VOR or TACAN RWY 14

SC-3, 11 JUN 2026 to 09 JUL 2026

SC-3, 11 JUN 2026 to 09 JUL 2026